



BOUWKUNDE
BEDRIJVEN
DAGEN



ELEVATE YOUR FUTURE

VeriCon

Table of Contents

Preface <i>VeriCon B.V.</i>	4
Committee of Recommendation	6
Preface <i>23rd Board</i>	8
Board 2024-2025	9
The BBD-App	10
Activities and Programme	12
Kick-Off & Lecture <i>by MVRDV - Fredy Fortich</i>	14
1-on-1 Interviews	15
Career Market	16
Masterclass by Enginear	17
Lecture <i>by Living Lab 040 - Monique Donker</i>	18
Workshop <i>by Count and Cooper</i>	19
Discussion: <i>'AI and the creative process of design'</i>	20
Workshop <i>Ruimtevolk</i>	21
Masterclass	22
Company Dinner - <i>Keukenconfessies</i>	23
Study and Sub-Associations	24
Company Classification	26
Companies	28
Expression of Gratitude	136

Colophon

This Company Guide is a publication of Stichting Bouwkunde Bedrijvendagen on occasion of the 24th edition of Bouwkunde Bedrijvendagen in 2025.

Contact Address

Stichting Bouwkunde Bedrijvendagen
Eindhoven University of Technology

Postbus 513
5600 MB Eindhoven

✉ info@bouwkundebedrijvendagen.nl
🌐 www.bouwkundebedrijvendagen.nl

Editorial Office

Bouwkunde Bedrijvendagen,
Promotion Committee 2024-2025

Preface

VeriCon

Dear students,

Welcome to the 24th edition of the Bouwkunde Bedrijvendagen.

This event is a great opportunity for you as a student to delve into the versatile world of construction engineering. Whether you are at the beginning of your studies or already thinking about your first steps into the working field, the Bouwkunde Bedrijvendagen offer a wide range of opportunities to discover, inspire and connect.

Therefore, take advantage of this opportunity and ask anything you want to know about working in this industry. Whether it's about the company culture, projects or career opportunities, don't be afraid to ask questions. But also be sure to tell about your own passions and ambitions, what excites you? You will find that companies appreciate an open and curious attitude, and are also interested to hear your story.

For more than 10 years VeriCon has been a regular participant, and for good reason. Because this is the event where we meet our future colleagues: you! Events like this encourage cooperation and innovation, two core values that we consider very important. In addition, construction is full of challenges, and we love them. Whether it's the evolution from craft to technology, cost savings or difficult sustainability questions, we don't shy away from a challenge. We hope you aren't as well. Are you curious about what else we stand for? We will gladly tell you all about it at our booth, where we can also chat about everything that is going on in the world of construction right now. Join us and build your future!

Then all that remains is to wish you all lots of fun and luck, hopefully this edition will be as great as the past ones!

Kind regards,
VeriCon

VeriCon



Committee of Recommendation

2024-2025

The initiative of the Bouwkunde Bedrijvendagen is supported by the following people:



Drs.
Robert-Jan Smits
President
TU Eindhoven



Prof.
Silvia Lenaerts
Rector Magnificus
TU Eindhoven



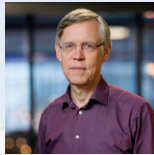
Prof. Dr. Ir.
Theo Salet
Dean Faculty of the
Built Environment
TU Eindhoven



Ir.
Jan van der Meulen
Director of Education
Faculty of the Built
Environment
TU Eindhoven



Prof. Dr. Ir.
Jos Brouwers
Full Professor and
Chair of Building
Materials



Prof. Dr. Ir.
Bauke de Vries
Full Professor USRE
TU Eindhoven



Prof. Ir.
Juliette Bekkering
Full Professor and
Chair of Architectural
Design and
Engineering



Prof. Ir.
Bert Snijder
Full professor and
Chair of Structural
Design



Pascal van der Molen
Director
KVI



Drs.
Arno Visser
Chairman
Bouwend Nederland



Karin Oomen
Advisor Education &
Job Market
Bouwend Nederland



Prof. Dr. Ir. A.
Tom Veldkamp
Rector Magnificus
University of Twente



Prof. Dr. Ir.
Tim van der Hagen
Chairman of the
Executive Board and
Rector Magnificus of
TU Delft



Prof. Ir.
Dick van Gameren
Dean Faculty of the
Built Environment
TU Delft



Preface

23rd Board

Dear Participant of the Bouwkunde Bedrijvendagen,

Welcome to the 24th edition of the Bouwkunde Bedrijvendagen! For over two decades, this event has been an integral part of the Built Environment faculty, helping students connect with a wide range of companies in the field. As the 23rd board, we are honored to organize this year's events. The focus will be on key developments in construction, including the rise of AI, sustainable construction practices, and the automation of construction processes. This year's edition is designed to provide all students—from first-years to graduates—with the tools they need to take their future to the next level. Students will have the opportunity to learn from leading companies, discover new organizations, expand their professional networks, gain insights into the industry, and explore career possibilities post-graduation.

The Built Environment encompasses a diverse array of disciplines, offering students a broad foundational understanding of the field. This foundation allows them to pursue the disciplines that align most closely with their interests and career aspirations. Given the potential impact of these choices on their futures, it is crucial for students to be well-informed about every aspect of their chosen fields. To support this, we at the Bouwkunde Bedrijvendagen, in collaboration with our main sponsor VeriCon B.V. and other participating companies, aim to provide valuable insights into the various disciplines and their practical applications. Our events enable students to explore opportunities, refine their skills, and clarify their ambitions. This year, our slogan, **'Elevate your future,'** is complemented by the phrase, **'One conversation at a time.'** This reflects the transformative power of a single meaningful discussion with a company. Begin by exploring different companies, follow your interests, and elevate your future—one conversation at a time.

This year's program will begin with a Kick-Off Lecture. Followed by the highlight of the event; the Career Market. This market provides an excellent opportunity to meet representatives from 51 participating companies, gather information, and gain insights into various career paths. Prior to the Career Market, students can participate in 1-on-1 Interviews, allowing for more personalized and formal interactions with company representatives.

The second week of the event begins with a Masterclass, a Lunch Lecture, and a Workshop—a day dedicated to learning, engaging, and collaborating with companies on real-world cases. That evening, a discussion will take place, focusing on the timely and relevant topic of post-war city reconstruction. The closing of the program, includes another Masterclass and Workshop, followed by the Company Dinner in the evening. This dinner, held at *keukenconfessies*, provides a more informal setting for students and companies to connect over a three-course meal, serving as the perfect conclusion to the event.

We look forward to seeing you at this year's events and supporting you in elevating your future!

The 23rd Board of the Bouwkunde Bedrijvendagen

Board 2024-2025

23rd Board - 24th Edition



Sam Bergmans
Chairmen
Member of Organization



Zara van de Mond
Secretary
Member of Business Contact



Ismay Assink
Treasurer
Member of Promotion



Jens Stevens
Head of Organization



Maria Stefanut
Head of Business Contact



Hilde Janssen
Head of Promotion



Noëlle Spiertz
Member of Organization



Annika Koks
Member of Business Contact

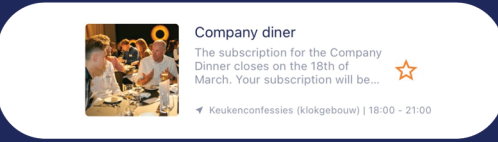


Zofia Atraszkiewicz
Member of Promotion

Click on the programme to see the **activities**



Create **your personal programme** by giving the activity a star



Discover new companies with the same interests by swiping!



Zoom in on the **interactive map** to find the location of the company you are looking for



Participate in the treasurer hunt to learn more about the companies.....



.....and **win** a bbd personalized winebox

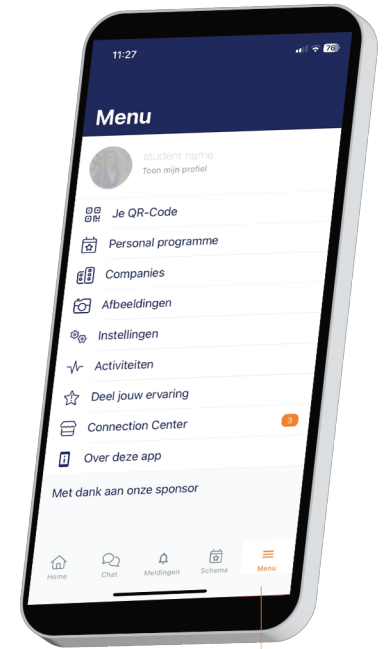
Personal account

Navigation bar

Personal QR-code



Log in at your personal account with your **student mail**. You will receive your credentials in your **mailbox**



Menu

Open the menu to discover all the **features of the app**

DOWNLOAD **THE BBD-APP** THROUGH THE **STUDENT REGISTRATION FORM**
the form can be found on instagram (link in bio)
@ bouwkunde_bedrijvendagen



Activities



Lectures



Masterclasses



Workshops



Discussion



1-on-1 Interviews



Career Market



Company Dinner

Programme

18
MARCH



12:40 - 13:30

Kick-Off Lecture by
MVRDV

19
MARCH



8:45 - 12:30

1-on-1 Interviews



12:30 - 16.00

Career Market

25
MARCH



09:00 - 10:30

Masterclass by
Enginear



12:30 - 13:30

Lunch Lecture by
Living Lab 040



14:00 - 17:00

Workshop by
Count & Cooper



19:30 - 21:00

Discussion:

'AI and the creative process of
design'

26
MARCH



09:00 - 12:00

Workshop by
Ruimtevolk



13:30 - 15:00

Masterclass by
Enginear



18:00 - 21:00

Company Dinner at
Keukenconfessies

The discussion is in collaboration with Studium Generale

For all activities you will earn my future activities



MyFuture.tue.nl



Kick-Off Lecture by MVRDV

12:30-13:30 @Trappenzaal

The Bouwkunde Bedrijvendagen officially kicks off on March 18th with an inspiring lecture to set the tone for the week. The event will begin with a brief opening speech by Theo Salet, Dean of the Built Environment, who will highlight the importance of connecting education with the professional world.

Following the opening, Fredy Fortich, a technical specialist at MVRDV, will take the stage. With extensive expertise in integrating AI into the design process, Fredy will share insights into his role at MVRDV and how artificial intelligence is shaping architectural workflows. From concept generation to detailed design, he will explore how AI can enhance creativity and efficiency in architecture.

This lecture offers a unique opportunity to gain an inside look at how cutting-edge technology is transforming the field of architecture and design. Don't miss the chance to be inspired by a leading professional from one of the world's most innovative architecture firms.



1-on-1 Interviews

08:45-12:30 @Vertigo and Matrix

The 1-on-1 interviews will take place on the **19th of March**. This is your moment to get a more formal, private talk with the representatives of a company of your interest. Every interview will last **15 minutes** in which you can present yourself and ask all the questions you want to ask the companies. It could possibly be your first contact moment with your future employer!

The following companies will be present at the 1-on-1 interviews:

- Arup
- Atrienis projecten
- Blitta Gevelsystemen
- Breed Integrated Design BV
- EGM Architecten BV
- FACTA Bouwmanagement BV
- Goudstikker - de Vries
- Haskoning DHV Nederland BV
- Hevo
- Mei Architects and Planners
- Nebest BV
- Republic
- RoosRos Architecten
- RYSE
- SVP
- Sweco
- Sweco Architects
- Turner & Townsend
- VeriCon
- Witteveen+Bos
- ZRi

Your CV is required as companies select students based on CV uploads. **The subscription for this closes on the 24th of February.** You can subscribe via bouwkundebedrijvendagen.nl.



Career market

12:30-16:00 @Trappenzaal

The most renowned event of the Bouwkunde Bedrijvendagen, the Career Market, takes place on the 19th of March.

During this market, a diverse selection of companies are present at the Plaza, in Vertigo, to give a depiction of the possibilities in the Built Environment sector.

After the market opens, you can walk around and talk to all different types of interesting companies. The companies are not the only ones present, all the study associations are there to inform you about the companies that fit their discipline.

If you are unsure where to begin, consider joining a guided tour led by one of the study associations. Alternatively, dive into the career market with the treasure hunt available in the new BBD app! Visit company stands, answer questions specific to each company, complete the hunt, and get a chance to win great prizes! After the market closes at 16:00, everybody is more than welcome to join the companies for some drinks at Plaza, powered by SkyBar!Underground.

At the Career Market, getting in contact with your future employer has never been so easy! Use the new BBD app to see where the company that you are interested in is located and use your unique QR-code to exchange information with companies!



Masterclass 1 by Engineer

09:00-10:30 @Vertigo

On March 25th, Engineer will host an insightful masterclass. This session offers students a comprehensive guide to the job market within the field of architecture and building, helping you discover what internship or job fits you best.

The masterclass begins with an overview of the current job market: where the opportunities lie and which areas may be more challenging. You'll also explore the differences between organizations in terms of work culture, development opportunities, and salaries.

To help you identify what suits you personally, you'll take part in a mini DISC test to uncover your strengths and preferences. What does your "color" reveal about the type of job that fits you? The session will also dive into understanding your personal drivers and translating them into finding a role that truly motivates you.

The masterclass concludes with a Q&A, giving you the chance to ask your burning questions about the job market and get tailored advice from Engineer's experts.

The subscription for the masterclass closes on the 21st of March. Subscribe through the BBD app.



Lunch Lecture by Living Lab 040

12:30-13:30 @Trappenzaal

On March 25th, the second lecture of the Bouwkunde Bedrijvendagen is delivered by Monique Donker, a former TU/e student and now a key figure at Living Lab 040.

Monique takes you on a journey through her career, sharing how her path evolved from her time at TU/e to her current role at Living Lab 040. She also dives into the core of Living Lab 040—its mission, vision, and her vital contributions to rethinking urban living.

The world is changing rapidly, and urban life is feeling the strain. It is time to rethink how we live and work in cities. At Living Lab 040, the future of urban living takes shape, a collaborative effort to reinvent tomorrow's cities.

Living Lab 040 is not just an idea; it is a tangible, living experiment. Spanning 8,500m² and featuring 119 experimental homes in an equally innovative area, it is a space where bold ideas flourish. Here, innovation, experimentation, and collaboration thrive, unburdened by traditional frameworks. Together with residents, businesses, municipalities, and knowledge institutions, Living Lab 040 is crafting cities where people truly thrive.

The first homes are complete, the research is ongoing, and the lab is already bustling with life. Join us to explore how Living Lab 040 is redefining urban living!



Workshop 1 by Count and Cooper

14:00-17:00 @Vertigo

On October 25th, a brand-new activity on the BBD agenda will take place: the workshops, hosted by Count & Cooper. This interactive session offers a unique opportunity to collaborate with fellow students on a real-world case study provided by the company, giving you valuable insight into their workflow and problem-solving approach.

The focus of the workshop is an assignment to repair and renew Amsterdam's aging quay walls, a critical challenge in a bustling city. With numerous stakeholders, competing interests, and strict regulations, effective planning becomes essential, especially when construction might disrupt the city's daily life due to noise, vibrations, or limited space.

In this session, based on actual ongoing work, students will be divided into teams to compete in creating the most efficient and innovative plan for the renovation of the iconic Heerengracht. This is your chance to apply your knowledge to a real-world scenario, learn from industry professionals, and showcase your strategic thinking.

The subscription for the masterclass closes on the 21st of March. Subscribe through the BBD app.



Discussion: 'AI and the creative process of design'

19:30-21:00 @Blauwezaal

AI tools – from generative design algorithms to machine learning-based systems – offer designers new opportunities to push the boundaries of innovation. "AI enhances design by automating tasks, generating ideas, personalising experiences, and fostering creative collaboration." Or so says ChatGPT, which presents itself in a very favourable light here. But as the use of AI for creative purposes accelerates, so do the ethical considerations about its role in the creative process. Questions around authorship, originality, and the potential replacement of human creativity are at the forefront of discussions. How much creative control should AI have? Can a machine truly innovate? In this discussion, we will reflect on the ethical implications of AI in engineering design and explore how to balance technological advancements with the preservation of human creativity and expression. This discussion examines both the promises and challenges of AI in design, exploring how we can embrace innovation while safeguarding the essence of human creativity and expression.

The discussion about 'AI and the Creative Process of Design' takes place on the 25th of March in the Blauwe Zaal of Auditorium. The discussion will be led by a three-member panel of experts from diverse backgrounds. The evening will be moderated by Jan Willem Wesselink, known from NPO Radio 1.

A Studium Generale point is administered to anyone participating in the activity. If you need this point, subscribe through studiumgenerale-eindhoven.nl



Workshop 2 by Ruimtevolk

09:00-12:30 @Vertigo

On March 26th, an exciting workshop by Ruimtevolk will take place as part of the BBD agenda. This interactive session offers a unique chance to explore design-driven research and collaborate with fellow students on developing future scenarios for the Eindhoven region.

Ruimtevolk specializes in tackling societal and spatial challenges, offering governments, market parties, and communities clear analyses, robust strategies, and actionable perspectives. By combining multidisciplinary expertise with a hands-on approach, they create smart connections between opportunities, challenges, and ambitions at every scale. In this workshop, you'll dive into scenario thinking for the Eindhoven region. After an introduction showcasing real-world projects by Ruimtevolk, you'll team up with fellow participants to address complex issues such as urban growth, sustainability, and livability. Guided by experts, you'll develop innovative strategies to navigate the uncertain future of the region while learning how to balance stakeholder interests and long-term goals.

This is your opportunity to gain valuable insights into design-driven problem-solving, work on real-world challenges, and showcase your creativity. Don't miss this chance to collaborate with Ruimtevolk and contribute to shaping the city of tomorrow.

The subscription for the masterclass closes on the 21st of March. Subscribe through the BBD app.

Masterclass 2 by Enginear

13:30-15:00 @Vertigo

On March 25th, Enginear will host another practical masterclass, designed to help you stand out in your academic and professional journey. Whether you're applying for a board year, internship, or your first job, this session will equip you with the tools to confidently present yourself and land the opportunities you aim for.

The masterclass begins with techniques to effectively pitch yourself. You'll learn how to craft and refine your pitch to make a strong impression, whether it's during a formal presentation or a casual conversation.

Next, you'll dive into the job application process: how to find vacancies, approach companies, and identify the right contacts to get your foot in the door. The session will guide you through every stage of the application process, from the initial contact to the final steps of contract negotiations and salary discussions.

This is your chance to gain practical insights and tips that will make your job search smoother and more successful.

The subscription for the masterclass closes on the 21st of March. Subscribe through the BBD app.



Company Dinner

18:00-21:30 @Keukenconfessies

The Company Dinner is the closing event of this year's edition and takes place on the 26th of March.

During the event, students get the chance to talk to companies in an informal atmosphere. The Company Dinner consists of three courses with some drinks at the end to close the night. During the courses you talk to the representatives of a company at the table assigned to you, after each course you switch to another table. After the last course you have an opportunity to talk to any of the attending companies with a drink. Every year the Company Dinner is held at a different location, this year it is held in restaurant KeukenConfessies in Het Klokgebouw.

The participating companies are:

- Witteveen+Bos
- Atrienis Projecten
- B-invented B.V.
- Cauberg Huygen
- Republic
- RYSE
- SKS Group B.V.
- Stevens Van Dijck
- Vericon
- WSP Nederland
- SWECO
- SWECO architects

The subscription for the Company Dinner closes on the 18th of March. Subscribe through the BBD app.



Study and Sub-Associations



🌐 cheops.cc
✉ info@cheops.cc

Built Environment Study Association



🌐 anarchi.cc
✉ info@anarchi.cc

AUDE



🌐 mollier.nl
✉ info@mollier.nl

BPS



🌐 www.koerstue.nl
✉ info@koerstue.nl

SED



🌐 service-studievereniging.nl
✉ info@service-studievereniging.nl

USRE

CME

Company Classification

Many companies in the built environment are multifaceted, operating in multiple fields, which can make their exact focus difficult to determine. To simplify this, the TU/e has developed a classification system based on the educational directions offered at the university. This classification is applied to all participating companies at the Bouwkunde Bedrijvendagen, helping you more easily identify your preferred directions and companies during the events. The TU/e provides multiple focus areas within the built environment, which are explained in detail on these pages. Companies have also been categorized according to these classifications, as outlined above.

AUDE **Architectural & Urban Design Engineering:** this ABP track stands at the cradle of inventive design solutions for concrete spatial issues, emphasizing the possibilities of the program, and ensuring a high quality of context. The track offers two specialisations: architecture and urbanism. The architecture specialisation within this track focuses on designing buildings, whereas the urbanism specialisation focusses on the bigger scale of urban planning.

USRE **Urban Systems & Real Estate:** this ABP track focuses on the functioning and research in the field of real estate management, urban planning, (re)development and management of cities and developing systems to support designers and decision makers.

BPS **Building Physics & Services:** this ABP track focuses on providing sustainable and comfortable indoor and outdoor environment with attention to physical aspects and processes such as heat and moisture transfer in building constructions, indoor air quality, lighting, acoustics, heating, ventilation, air-conditioning and materials.

SED **Structural Engineering & Design:** this ABP track contains innovative constructive design, material research and applied mechanics, with core focus on knowledge and application of different structural materials as well as on several methods to solve mechanical problems.

CME **Construction Management & Engineering:** this master program focuses on process and project management, collaborative design and legal structures, with its focus point on information systems in smart cities and smart buildings.

SUMT **Sustainable Urban Mobility Transitions:** this is one of the new ABP master tracks at the edge of the build environment scope, where students implement a holistic approach in facing different issues traditionally faced by architects and urban planners, civil and transport engineers, and political scientists.

SMDSA **Smart Mobility Data Science and Analytics:** Nowadays, data is extracted from all aspects of our lives. We leave data trails in every day-to-day activity, including travelling. At SMDSA one learns to manage large mobility data files, critically understand their quality and use them to address our cities' most pressing challenges.

BT/CT **Building Design & Technology (BT)*:** emphasizes on the relation between the design of the building and its technical elaboration.
Construction Technology (CT)*: emphasizes on independent designing and developing a production process for the construction of a building by using materials, equipment and labor in the most optimal way.

*These are no longer separate master tracks, but are achievable as certificate programs in addition to any of the master tracks and offer the possibility to broaden your education.

Orientation

On the next pages, a list of companies that are participating in the events of Bouwkunde Bedrijvendagen is provided. All companies are classified based on this colour-coded classification to the master tracks they match the best with. Note that some companies are involved in multiple work fields and therefore have multiple matches.

If you're interested in a company and would like to read more about the work in its active branch, orienting for career options or just want to know in which events they participate, look up the corresponding page number of their dedicated company pages in the list of participating companies and read more about it.

On the bottom right of the company pages, an indication is given using orange activity symbols for every company, stating in which events they participate during the Bouwkunde Bedrijvendagen.

As part of the MyFuture collective, MFA can be earned by participating in the events organised as part of the Bouwkunde Bedrijvendagen.

Companies

	Page Nr.	AUDE	USRE	BPS	SED	CME	SUMT	SMDSA	BT	CT
1. Adviesbureau Tielemans BV	30	○	●	○	●	○	○	○	○	○
2. Aronshon raadgevende ingenieurs	32	○	○	○	●	●	○	○	○	●
3. Arup	34	○	○	●	●	●	○	○	○	●
4. AT Osborne	36	○	●	○	○	●	●	○	○	○
5. Atriensis Projecten	38	○	●	●	○	●	○	○	○	○
6. Besix	40	○	○	●	●	●	○	○	○	●
7. BiermanHenket architecten	42	●	○	○	○	○	○	○	○	○
8. B-invented BV	44	○	○	○	○	●	○	○	○	●
9. Blitta Gevelsystemen	46	○	○	●	○	●	○	○	○	●
10. Breed Integrated Design BV	48	○	○	○	●	○	○	○	○	○
11. Brink	50	○	●	○	○	●	○	○	○	○
12. Bulsink Group BV	52	●	○	○	○	●	○	○	○	○
13. Bureau Bouwcoördinatie Nederland BV	54	○	●	○	○	●	○	○	○	○
14. Cauberg Huygen	56	○	○	●	○	○	○	○	○	○
15. Cordeel Nederland	58	○	○	○	●	●	○	○	○	●
16. Count & Cooper	60	○	○	○	○	●	○	○	○	○
17. Croes Bouwtechnisch Ingenieursbureau	62	○	○	○	●	○	○	○	○	○
18. EGM Architecten BV	64	●	○	○	○	○	○	○	○	○
19. FACTA Bouwmanagement	66	○	●	○	○	●	○	○	○	●
20. Goudstikker - de Vries	68	○	○	○	●	○	○	○	○	○
21. HaskoningDHV Nederland BV	70	●	○	●	●	●	○	○	○	●
22. Heijmans	72	○	○	●	●	●	○	○	○	●
23. HEVO	74	●	●	○	○	●	○	○	○	○
24. ICS adviseurs BV	76	●	●	●	○	●	○	○	○	○

25. KAW architecten & adviseurs	78	●	○	●	○	○	○	○	○	●
26. Koninklijke BAM Groep NV	80	●	●	●	●	●	○	○	○	●
27. KWK Huisvestigingsregisseurs	82	●	●	●	●	●	○	○	○	●
28. Mei Architecten	84	●	○	○	○	○	○	○	○	○
29. Movares	86	●	●	●	●	●	○	○	○	●
30. Nebest BV	88	○	○	●	○	○	○	○	○	●
31. Nelissen Ingenieursbureau	90	○	○	●	○	○	○	○	○	○
32. OPPS BV	92	○	●	○	○	○	○	○	○	○
33. Pieters Bouwtechniek BV	94	○	○	○	●	○	○	○	○	●
34. Powerhouse Company International BV	96	●	○	○	○	○	○	○	○	○
35. Republiq	98	○	●	○	○	○	○	○	○	○
36. RoosRos Architecten	100	●	○	○	○	○	○	○	○	○
37. RYSE	102	○	●	○	○	○	○	○	○	○
38. SKS Group	104	○	○	○	●	○	○	○	○	○
39. Sonneborgh	106	○	●	○	○	○	○	○	○	○
40. Stevens van Dijck	108	○	○	○	○	○	○	○	○	●
41. SVP	110	●	○	○	○	○	○	○	○	○
42. Sweco BV - Architecten	112	●	○	○	○	○	○	○	○	○
43. Tentech BV	116	○	○	○	●	○	○	○	○	○
44. Trudo	118	○	○	○	●	○	○	○	○	○
45. Turner & Townsend	120	●	○	○	○	○	○	○	○	○
46. Uptime Partners	122	○	●	○	○	○	○	○	○	○
47. Van Wijnen	124	○	○	○	○	○	○	○	○	●
48. Vericon	126	○	○	○	●	○	○	○	○	●
49. Witteveen + Bos	128	●	●	●	●	●	○	○	○	●
50. WSP Nederland	130	○	○	●	●	○	○	○	○	●
51. ZRi	132	○	○	●	○	○	○	○	○	●
52. ZZDP Architecten	134	●	○	○	○	○	○	○	○	○

Adviesbureau Tielemans Bouwconstructies B.V.

Branch
Consultancy

Classification

- AUDE
- USRE
- BPS
- SED
- CME
- SUMT
- SMDSA
- BT
- CT

HQ Location
Eindhoven

Employees
40

Visiting address
Insulindelaan 113
5642CV
Eindhoven

Contact person
Desiree Zijlmans

+31 0402814455

dzijlmans@tielemans.nl

tielemans.nl

linkedin.com/company/adviesbureau-tielemans-bv



Since its foundation in 1958 Adviesbureau Tielemans has become one of the largest and most leading structural consultants in this region. Based in Eindhoven, our engineers work with reputable national and international architects on innovating and eye-catching projects both in the Netherlands and abroad. Come see us at our stand and learn what our office has to offer you as a talented engineer!

Working at Adviesbureau Tielemans in a design team you aim for the highest achievable combination of shape, structural efficiency and function. This also means following the technological developments in our field so that they can directly contribute to the desired result in practice. Depending on your own skills, you will have the opportunity and support to grow into a project manager function in a short period of time. Within every project we are facing the challenge to elaborate any architectural concept to a suitable structural design . This resulted in the recently awarded prices:
"Domus Dela" BNA Building of the year public award 2020 and Dirk Roosenburg public award 2021; Haasje Over (top photo) won residential building of the year by Architectenweb; Onyx won Holland Hoogbouw Award 2019.



Adviesbureau Tielemans is situated nearby Eindhoven University of Technology. Hence, knowledge and structural design are close together. This means there is a high probability that, as a student of the University, you have seen projects in Eindhoven of which Adviesbureau Tielemans has designed the main bearing structure. For example, some highrise on Strijp-S: Blok 59, NEXT, The Lux Tower, Trudotoren and Haasje Over, but also de Bakermat, Onyx, The Student Hotel and renovation of the Stadhuistoren, Philips Bedrijfschool and TD-gebouw.

Some other recent projects around the Netherlands include Nehmo Trespa (bottom photo), Aan de Kei, Bellavista, fire station Waalwijk, police station Bergen op Zoom and the Willemspoor. If you are interested, come and meet our engineers at the Adviesbureau Tielemans stand!

Interested in working at Adviesbureau Tielemans? Scan the QR-code to view available vacancies.



Aronsohn Raadgevende Ingenieurs

Branch

Construction design

Classification

- AUDE
- USRE
- BPS
- SED
- CME
- SUMT
- SMDSA
- BT
- CT

HQ Location

Rotterdam

Employees

45

Visiting address

Kruisplein 488
3012CC
Rotterdam

Contact person

Wil van de Wouw

+31 010 2808080

info@aronsohn.nl

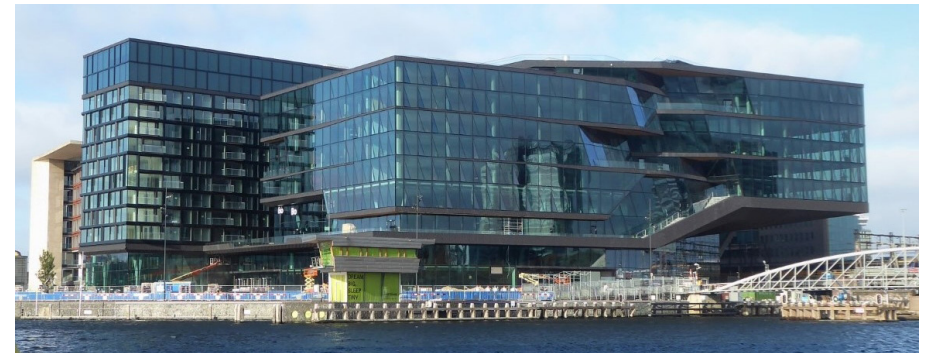
aronsohn.nl

linkedin.com/company/aronsohn/



Aronsohn is a consultant in the field of designing and engineering building structures and project- and construction management. Founded in Rotterdam in 1927, we have since then obtained extensive knowledge and experience with regard to designing, detailing and the supervision of the execution of structures and foundations. Our field of work consist of all building types like office and residential buildings, shopping centres, hospitals and care centres, laboratories, buildings for cultural and recreational purposes, for educational purposes, parking garages, and industrial buildings. We also provide project management and construction management services for new building projects, renovations and transformations.

The firm employs 45 staff in our Rotterdam and Eindhoven offices. Our projects are like the grading of aggregates in good concrete: small projects fill the voids between large and sometimes very large projects. This results in a solid base for a stable and strong organisation.



Interested in working at Aronsohn? Scan the QR-code to view available vacancies.



Arup

Branch
Engineering advisory bureau

Classification

- AUDE
- USRE
- BPS
- SED
- CME
- SUMT
- SMDSA
- BT
- CT

HQ Location
London

Employees
18500

Visiting address
Naritaweg 118
1043CA
Amsterdam

Contact person
Paul van Horn

 +31 020 3058500

 paul.van-horn@arup.com

 arup.com

 linkedin.com/company/arup/



ARUP



Arup is a global collective of designers, engineers and technical experts. We use imagination, technology and rigour to shape a more sustainable world. Since 1946, Arup has paired design and engineering ambition with social purpose. Today, we harness our deep technical expertise, partnering with our clients to build a better future for all. Contributing to sustainable development lies at the heart of our approach to business. Our efforts to ensure that our business is environmentally responsible and as sustainable as possible began many years ago, and these efforts continue and intensify. Our strategic corporate commitments include our global decarbonisation strategy, designed to ensure we achieve net zero by 2030. Our experts, plan, design and engineer solutions that deliver multiple benefits. We look for opportunities to strengthen communities, build resilience and advance climate action through our work for clients.



Interested in working at Arup? Scan the QR-code to view available vacancies.



AT Osborne

Branch

Consultancy

Classification

- AUDE
- USRE
- BPS
- SED
- CME
- SUMT
- SMDSA
- BT
- CT

HQ Location

Baarn

Employees

150

Visiting address

J. F. Kennedylaan 100
3740AD
Baarn

Contact person

Xynthia van den Oetelaar

+31 035 5434343

info@atosborne.nl

atosborne.nl

linkedin.com/company/at-osborne/



AT OSBORNE

AT Osborne strives to make the world around us a better, more beautiful place to live in. The design of the living environment contributes significantly to the well-being of people. Examples are unobstructed mobility, a clean and safe environment, suitable accommodation and good healthcare. AT Osborne works on sustainable solutions for these challenges. Our focus is on infrastructure, healthcare and sustainable living environment. Our motto: 'Urban Matters, People Matter'.

At AT Osborne, large-scale projects are our bread and butter. We enjoy sinking our teeth into seemingly unsolvable puzzles. We get floundering projects back on track. And we apply our expertise to resolving legal issues. We enjoy working in close collaboration with each another to create a better living environment. Since 1969, we work for public clients, ministries, provinces, municipalities, health care organizations and housing corporations. Clients employ AT Osborne to manage content or take charge of a design, project or program on their behalf – whether as a project or process manager, a legal or financial expert, a tendering specialist or a trainer.



What makes us different? We leave the grandiose ideas to the dreamers – our focus is on finding practical solutions to the complex problems faced by our society. We are determined and assertive. Why? Because we know from experience that every problem has a solution. And sometimes this involves looking at day-to-day, deep-rooted practices. Our huge pool of around 150 (project) managers, consultants and specialists puts us in a unique position to assess problems from various angles. Every consultant at AT Osborne relishes the challenge of bringing all parties together and achieving results as quickly as possible with the minimum expenditure. This requires a combination of sensitivity (political or otherwise), creativity, well-conceived legal structures, an understanding of human nature, knowledge of specific

content and level-headedness. It is no coincidence that these are the skills and qualities that we look for and develop in our managers and advisers.

AT Osborne investing in talent We invest in our people. Especially in young talent. Starters are supported to combine work, education and research in our Young Osborne Program. They experience personal development in a short period of time and are given the opportunity to explore their own fields of interest. AT Osborne is always looking for people who like a challenge. People with ambition, own initiatives and creativity.

Interested in working at AT Osborne? Scan the QR-code to view available vacancies.



Atrientis Wonen

Branch

Sustainable social real estate

Classification

- AUDE
- USRE
- BPS
- SED
- CME
- SUMT
- SMDSA
- BT
- CT

HQ Location

Eindhoven

Employees

125

Visiting address

Zemikestraat 17b
5612HZ
Eindhoven

Contact person

Susan van den Boomen

+31 040 7501520

s.v.d.boomen@atriensis.nl

atriensis.nl

linkedin.com/company/atriensis/



atriensis

Atrientis Wonen is a young and dynamic company. We support social housing associations with their challenges related to energy and sustainability. Our advisory services focus on:

- Energy and sustainability policies
- Renovation projects
- Gathering and controlling real estate data
- Programs to stimulate and motivate conscious residents' behavior
- Advice on the implementation of new energy technologies

Atrientis Wonen has a flat organizational structure. Due to continued growth, we offer many career possibilities for starters with different disciplines within the built environment. Atrientis wonen is an organization with passion for sustainability and a heart for social housing. Atrientis wonen operates throughout the Netherlands from offices in Eindhoven, Zwolle and Amstelveen. We work together with our sister companies Atrientis data and Atrientis wijken. Atrientis data focuses on gathering and controlling real estate data and Atrientis wijken supports the social sector in the area-based approach to the heat transition. From planning, process facilitation, and legal and technical support to resident participation and communication.



Employees of Atrientis Wonen share a number of qualities:

- Social responsibility
- Customer orientation
- Integrity
- Reliability
- Fluent in Dutch

Atrientis was founded 19 years ago. Atrientis wants to motivate and fascinate their employees, establish a sustainable working relationship with them and ensure a good work-life balance. For example, Atrientis provides a free daily lunch, flexible working hours, working from home, a customized internal training program

with around 70 – in company – courses and excellent working conditions with many possibilities to develop yourself!

Internship, graduation or your first job at Atrientis? Interested in applying for a position with us? We have many (job) opportunities: internships, graduation projects and vacancies for starters and young professionals.

Interested in working at Atrientis? Scan the QR-code to view available vacancies.



BESIX Nederland B.V.

Branch

Buildings, Infrastructure, Environment & Maritime works

Classification

- AUDE
- USRE
- BPS
- SED
- CME
- SUMT
- SMDSA
- BT
- CT

HQ Location

Dordrecht

Employees

170

Visiting address

Laan van Europa 900
3317DB
Dordrecht

Contact person

Eveline Kardijs

+31 078 2062300

hml@besix.com

besix.nl

linkedin.com/company/besix-nederland/



BESIX Nederland is a multidisciplinary construction company with a decades-long track record of innovative and trendsetting projects. Our experience and expertise give us the courage to think bigger. As an enterprising construction partner, we form decisive teams with the strongest large and small players. This allows us to offer an integral approach to every challenge and to respond to the fast-growing dynamics in the market. Because we understand the client's motives and adopt a proactive and solution-oriented attitude, we create value that transcends construction: before, during and after the construction phase.

Our people play an indispensable role in our organisation. We believe that without them, without working together as a team among ourselves and working as a team with the client, we could not be the successful company we are today.

BESIX Nederland has a strong reputation when it comes to complex projects. We owe these successes to the innovative way we integrate engineering and construction in our processes. In the maritime sector, we build innovative ports, quay walls, dykes and dams, in the environmental sector advanced sewage treatment plants. To widen the Amazone Harbour in



Rotterdam, we worked underwater on an unprecedented scale with explosives and hydraulically movable formwork.

In civil construction, we manufacture tunnels, bridges, car parks and stations used by millions of people every day. The Lammermarkt car park is the deepest in the Netherlands, and yet no building in the historic centre of Leiden subsided.

In complex utility construction, BESIX Nederland has developed expertise in building offices, shopping centres and unusual high-rise residential towers. For example, we built the three tallest towers in the Netherlands on Wilhelminapier in Rotterdam:

Montevideo, the Maastoren, and New Orleans.

As part of the BESIX Group, we can draw on international experience and expertise that competitors look at with envy. The 18,000 BESIX Group employees are building the future day in, day out. The organisation is tightly knit, allowing us to keep the lines of communication short and respond quickly. The Group boasts extensive experience in more than 20 countries, both inside and outside Europe.

Interested in working at BESIX? Scan the QR-code to view available vacancies.



BiermanHenket Architecten

Branch

Architecture, interior design & renovations

Classification

- AUDE
- USRE
- BPS
- SED
- CME
- SUMT
- SMDSA
- BT
- CT

HQ Location

Esch

Employees

60

Visiting address

Walpoort 10
5211 DK
's-Hertogenbosch

Contact person

Joep van As

+31 411 601618

info@biermanhenket.nl

biermanhenket.nl

linkedin.com/company/biermanhenket



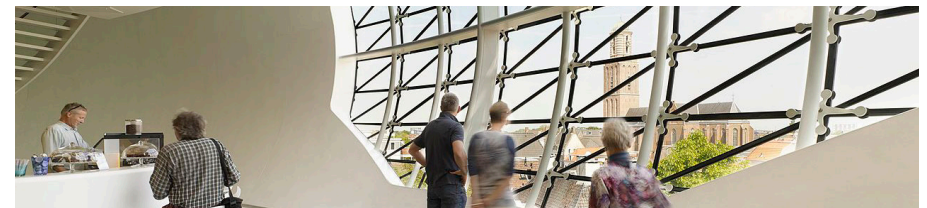
BiermanHenket

architectuur | interieur | restauratie | techniek

In 1976, Hubert-Jan Henket started his own architectural firm under the name Hubert-Jan Henket architecten bna. Together with a large group of talented architects and technical designers, the firm has built up a rich oeuvre over the past 40 years. The extension of the Museum Boijmans Van Beuningen (1988 - 1991) was the breakthrough for the firm.

BiermanHenket is specialized in the restoration, transformation and expansion of existing, mostly monumental buildings. In addition, we create new buildings that naturally fit into the city and neighbourhood. We focus on renovation and transformation of existing buildings and the integration of contemporary programs in a historical, urban context. The Haarlem courts (2005), the Museum Quarter in 's-Hertogenbosch (2005 - 2013), the new Deventer library (2018) and the Move building in Amsterdam (2019) are good examples of this.

We want to create surprising buildings and interiors in which people can move around comfortably and that stimulate encounters. With historical awareness, we build on the layered city. We strive for high-quality architecture that naturally fits into use but also leaves room for change.



The meeting of old and new and the design of the interior receive special attention. A careful balance between tradition and modernity is pursued, with functional clarity and technical innovation leading to sustainable buildings. Because functional and technical requirements are changing ever faster, we design flexible buildings that can easily be adapted in the future. This design approach is in line with the need for circular design. In recent years, the sustainability of existing buildings has become increasingly important in the work of the firm.

The knowledge and skills that the firm has developed in over 40 years are being further developed and increasingly used.

BiermanHenket consists of an ambitious and close-knit team, working on special and leading projects. The interaction between people forms a guideline in our work.

Interested in working at BiermanHenket? Scan the QR-code to view available vacancies.



B-invented B.V.

Branch

Engineering, technical design & consultancy

Classification

- AUDE
- USRE
- BPS
- SED
- CME
- SUMT
- SMDSA
- BT
- CT

HQ Location

Eindhoven

Employees

45

Visiting address

Achtseweg Zuid 153M
5651GW
Eindhoven

Contact person

Ingrid Oosterom

+31 040 7805131

ingrid.oosterom@B-invented.com

B-invented.com

linkedin.com/company/b-invented-b.v.



B-group

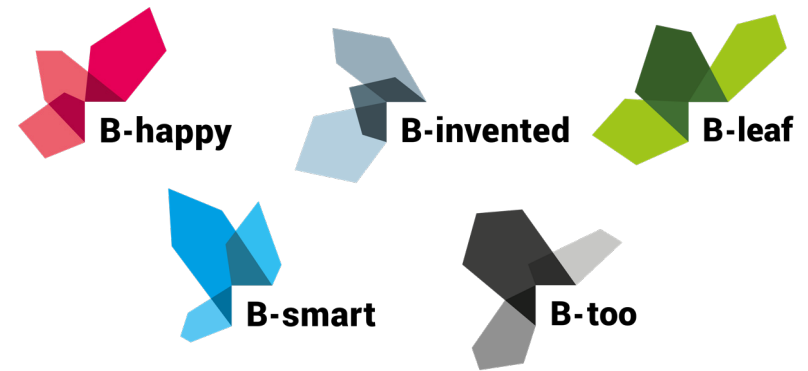


Building a better future together is possible if you don't see construction as a series of traditional actions, but as a process that can be optimized continuously. We do that by manufacturable designing and engineering. We look at the process and match our ideas with those of our clients and subcontractors. That way we can guarantee in advance that people, methods and resources fit together perfectly. The result is a construction process that runs smarter, more efficiently and carefree.

We currently do this with our 5 companies:

- B-too B.V.
- B-invented B.V.
- B-smart fundering B.V.
- B-leaf systeembouw B.V.
- B-happy realisatie B.V.

We create, construct and realize buildings today with the solutions of tomorrow. B-invented is our engineering firm for architectural- and structural engineering. Our approach is one that should suit you because we do it differently than other engineering firms. Our goal is to optimize the process of a total construction project. An optimal process gives maximum results and that's why we are driven construction improvers. B-smart fundering realizes the complete substructure: from piling to the ground floor. The necessary structural and



constructive engineering is provided by our sister company B-invented. They combine their knowledge with the experiences of our permanent implementation teams. To optimize the process, we have developed products that make this possible, such as the B-smart and B-smart S-elements and various prefab system components. Smart in the basics. Since we are very conscious of our impact on current and future society, in 2023 we introduced our newest B-group member, B-leaf. As B-smart, B-leaf realizes complete substructures however their choice of material differs. B-leaf's main materials are wooden construction systems. B-happy takes care of the architec-

ture, engineering and realization for all types of construction: from industrial buildings and logistics complexes to offices, apartments and homes. We mainly work for professional clients. In addition, we develop innovative visions such as exclusive villas, vertical neighborhoods and visions for primary care centers and customized care homes. The construction is the proof. Finally, B-too focuses on architecture, interior design of private interiors and business interiors and villa's.

Interested in working at B-invented? Scan the QR-code to view available vacancies.



Blitta Gevelsystemen B.V.

Branch
Façade construction

Classification

- AUDE
- USRE
- BPS
- SED
- CME
- SUMT
- SMDSA
- BT
- CT

HQ Location

Venray

Employees
110



Visiting address

Maasheseweg 77
5804AB
Venray

Contact person

Sanneke Kettenis

+31 621851817

s.kettenis@blitta.nl

blitta.nl

linkedin.com/company/blitta/



Since our beginnings as a blacksmith's workshop in 1874, Blitta has grown into a trusted partner in façade engineering. Over the past 150 years, we have built a reputation for craftsmanship, reliability, and innovation. Specializing in high-performance aluminum façade systems and modular construction solutions, we work closely with our partners to deliver façades that meet both functional and aesthetic demands.

At Blitta, we combine technical expertise with creativity to develop façade solutions tailored to each project. Our portfolio includes unitized façades, point-fixed glazing, dynamic solar shading, and custom façade systems. We collaborate with architects and contractors to translate ambitious designs into practical, high-quality solutions that perform as intended.

Our production facilities are built on decades of experience and skilled craftsmanship. By maintaining close control over the manufacturing and assembly processes, we ensure the quality and precision of each façade element. While we are always looking to innovate, we remain grounded in proven methods that guarantee reliability and performance.



Sustainability is an integral part of our work. We strive to enhance the environmental performance of our façade systems by applying innovative techniques and materials. Our solutions meet BREEAM and LEED standards, contributing to buildings that are energy-efficient and environmentally responsible. By balancing sustainability with functionality and design, we help create façades that stand the test of time.

Recent projects, such as Berghaus Plaza and The Valley in Amsterdam, illustrate our ability to bring complex designs to life. These façades reflect not only our technical expertise but also our dedication to working collaboratively with all project partners to achieve outstanding results. Looking to the future, Blitta remains



committed to advancing façade technology and sustainable practices. With ISO 9001:2015 certification and active membership in industry associations, we continue to refine our processes and contribute to the development of the façade engineering field. Whether you are an experienced professional or an aspiring engineer, Blitta offers opportunities to work on exciting projects and shape the buildings of tomorrow.

For 150 years, we have proudly contributed to shaping skylines with high-quality façades. We invite you to join us in building the future of architecture.

Interested in working at Blitta? Scan the QR-code to view available vacancies.



BREED Integrated Design BV

Branch

Structural Engineering

Classification

- AUDE
- USRE
- BPS
- SED
- CME
- SUMT
- SMDSA
- BT
- CT

HQ Location

Den Haag

Employees

10

Visiting address

Korte Koediefstraat 6-8
2511CE
Den Haag

Contact person

Jeroen Evers

+31 070 7852944

jeroen@breedid.nl

breedid.nl

linkedin.com/company/breed-integrated-design



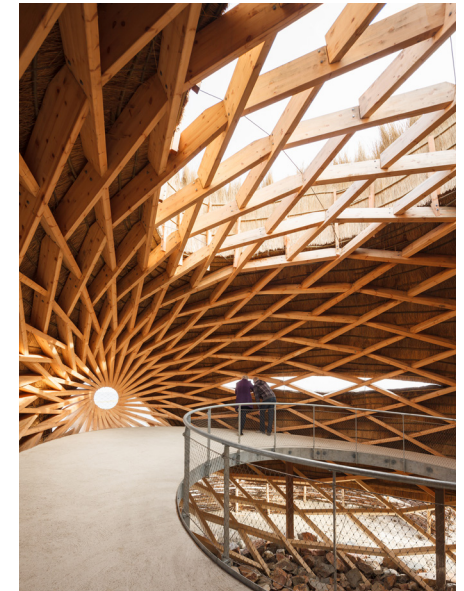
At BREED Integrated Design, we have a passion for the role that structure plays within the architecture. Structural design is shaped by the laws of physics, but it also needs to be crafted according to the spatial experience of the users. Through scale, rhythm, and materiality, a structure can enrich space, becoming an essential design instrument. We aim to be involved in the design process at an early stage, offering structural alternatives and collaborating with the architect and other design team members to achieve the optimal result.

BREED Integrated Design was founded in 2006 by Gilbert van der Lee out of a predilection for the tension between structural engineering and architecture. Gilbert was the first student at TU/e to graduate in both masters 'Architecture' and 'Structural Design'. In 2019 Jeroen Evers joined the management team. Jeroen successfully completed the same dual master track at TU/e. At BREED ID we work on high-profile projects in The Netherlands and abroad. The projects vary in scale and type: from artworks to high-rise buildings, from villas and monkey residences to (non-)residential buildings and bridges. Below is a selection of projects we are particularly proud of.



Villa 1 (in collaboration with Powerhouse Company) is a wonderful example of a project where structure and architecture are fully integrated. An important structural element in this villa is an open steel bookcase that supports and stabilizes the roof. For this, the bookcase is designed as a 'Vierendeel' truss. As a result, the roof, with large overhangs, appears to be largely floating.

TIJ (in collaboration with RO&AD, RAU and Geometria) is a bird observatory in the shape of an egg. The egg is parametrically designed to find a good balance between architectural wishes and structural requirements. The structure is formed by a Zollinger system. As a result, large, double-curved spans can be made with wood. Through its re-usability, its modularity, its materials and its contribution to the natural



environment, it is almost completely circular and sustainable.

The Marga Klompé Building at Tilburg University, designed with Powerhouse Company, features an auditorium, 13 lecture halls, and study spaces for 1,000 students. The structural design is all about applying the right material at the right position. The result is a balancing act between steel trusses, timber beams and columns and a concrete core. Special attention was given to minimizing vibrations from nearby train tracks. It won in 2024 the Architectenweb School of the Year, Cobouw Sustainability award and the Archello University Building of the Year.

Interested in working at BREED? Scan the QR-code to view available vacancies.



Brink

Branch

Construction management & Real Estate Consultancy

Classification

- AUDE
- USRE
- BPS
- SED
- CME
- SUMT
- SMDSA
- BT
- CT

HQ Location

Rotterdam

Employees

230

Visiting address

Stationsplein 45
3013 AK
Rotterdam

Contact person

Franklin Brandsma

+31 6 83090678

f.brandsma@brink.nl

komwerkenbijbrink.nl

linkedin.com/company/brink-nl/



BRINK

Join us at the forefront of construction, infrastructure, and real estate. We offer comprehensive market insights through our management and consultancy services, software solutions, and financial expertise. Together with our clients, we push the boundaries of what's possible. Each member of our team at Brink brings unique expertise, and we work closely with a diverse range of clients and partners. Our data-driven approach enables us to provide exceptional solutions to a variety of complex challenges. At the heart of it all is our commitment to excellence, and we invite you to join us on this journey.

At Brink, we offer a collaborative and innovative work culture, where growth and development are valued. Our challenging projects and dynamic environment provide exciting opportunities to work with talented professionals. Join us in changing the industry and shaping the future of construction, infrastructure, and real estate.



Interested in working at Brink? Scan the QR-code to view available vacancies.



Bulsink Group BV

Branch
Built Environment

Classification

- AUDE
- USRE
- BPS
- SED
- CME
- SUMT
- SMDSA
- BT
- CT

HQ Location
Son

Employees
85

Visiting address
Ekkersrijt 7005
5692 HB
Son

Contact person
Marieke van Gestel

+31 6 83502067

hr@bulsink.com

bulsink.com/

linkedin.com/company/bulsink-group-bv



Bulsink is the general contractor for the retail, hospitality, office and leisure branche. We build the retail, hotels, gyms, and offices of the future. Whether it is a renovation, construction, multi-functionalization or digitalization of a project, Bulsink is the ultimate partner to realize your vision.

Building your ambitions
No matter what your ambitions may be, we help you achieve them! With our substantial experience within several branches and with leading clients like Rituals and Basic-fit; we know how to create an impression that lasts!

We understand that when it comes to property, organizations constantly need to rethink, adapt, and modify themselves. The need for a single point of contact is greater than ever. We are that one point of contact.



Interested in working at Bulsink? Scan the QR-code to view available vacancies.



Bureau Bouwcoördinatie Nederland BV

Branch
Consultancy

Classification

- AUDE
- USRE
- BPS
- SED
- CME
- SUMT
- SMDSA
- BT
- CT

HQ Location
Houten

Employees
120

Visiting address
De Molen 65
3995 AW
Houten

Contact person
Maaïke Stip

+3188 2267400

info@bbn.nl

bbn.nl

linkedin.com/company/bbn-adviseurs



bbn adviseurs is an independent consultant company in real estate and land development. We work on many different types of real estate projects. We support our clients with real estate initiatives, urban (re)development, housing issues and construction initiatives. Different types of projects also provide different clients, like public institutions, governments, commercial clients and so on.

Sustainability is essential in our company, in which renewable energy, circularity and livability are our three primary objectives. "At bbn we want to make the world a bit cleaner" and together with our clients we contribute to the Sustainable Development Goals (SDGs) of the United Nation. This year we opened our CO2-neutral office in Houten. With its circular and biobased materials it fits our mission, and it is a comfortable place to work together.

Our expertise is widely acknowledged. Among others, we employ project managers, planning economists, construction cost managers, real estate managers, data analysts and sustainability specialists. Combining this expertise in multidisciplinary teams, we take on challenging and exciting assignments with an integral approach.



An integral approach entails a combination of the perspectives from all of the different disciplines and an open dialogue to achieve the best and most fitting result for the client. The strength of bbn is our unique broadness of our services. We have knowledge in every market domain. With all disciplines "in house" we bring added value to our clients in every building lifecycle.

We frequently organize project visits, masterclasses and social events with young bbn. We are always open for talent to strengthen our teams. With our different offices at Houten, Amsterdam and Rotterdam there is always a place that would suit you. bbn will give you all the freedom you require to fully develop your potential and fulfill your ambitions. We offer the opportunity to explore your passion, to specialize and grow on a personal and professional level.



Interested in working at BBN? Scan the QR-code to view available vacancies.



Cauberg Huygen

Branch

Consulting Engineering

Classification

- AUDE
- USRE
- BPS
- SED
- CME
- SUMT
- SMDSA
- BT
- CT

HQ Location

Rotterdam

Employees

130

Visiting address

Hoofdweg 76
3067 GH
Rotterdam

Contact person

Pieter Molenaar

+31 6 15875814

werk@cauberg Huygen.nl

cauberg Huygen.nl/

linkedin.com/company/cauberg-huygen/



CAUBERG HUYGEN

Cauberg Huygen is a consulting engineering firm focussed on the built environment, environmental consultancy for companies and industry, and environmental monitoring for government agencies. In the field of the built environment we have expertise in building physics, acoustics, sustainability, fire safety engineering and building quality.



Interested in working at Cauberg Huygen? Scan the QR-code to view available vacancies.



Cordeel Nederland

Branch

Constructing

Classification

- AUDE
- USRE
- BPS
- SED
- CME
- SUMT
- SMDSA
- BT
- CT

HQ Location

Zwijndrecht

Employees

150

Visiting address

Lindtsedijk 22
3336 LN
Zwijndrecht

Contact person

Alexandra Damen

+31 6 57451005

alexandra.damen@cordeel.eu

cordeel.nl/nl

linkedin.com/company/cor-deel-nederland/



As a family business with our headquarters in Zwijndrecht and branches in Vlissingen, Terneuzen, Neer (Cordeel Geelen), and Amsterdam (Cordeel Amsterdam VOF), we are building for the future with more than 150 enthusiastic colleagues! As a design-and-build contractor, we build nearly everything and do almost everything (a lot) in-house. We are active in various sectors, including industry & petrochemicals, logistics, office construction, civil and hydraulic engineering, shipyards, culture, healthcare, sports, and education. All of them are sustainable buildings and structures that we work on with passion and craftsmanship.



Interested in working at Cordeel Nederland? Scan the QR-code to view available vacancies.



Count & Cooper

Branch

Construction Management

Classification

- AUDE
- USRE
- BPS
- SED
- CME
- SUMT
- SMDSA
- BT
- CT

HQ Location

Rotterdam

Employees

70

Visiting address

Stationsplein 45 unit A7. 194
3013 AK
Rotterdam

Contact person

Puck ten Hoop

010 - 26 13 113

info@countcooper.nl

countcooper.nl/

linkedin.com/company/count-&-cooper/posts/



COUNT & COOPER

BUILDING NEW WAYS

Count & Cooper is an innovative consultancy and management firm specializing in the execution of complex, large-scale projects in sectors such as infrastructure, construction, energy, and transportation. The company operates at the intersection of project management, process optimization, and stakeholder management. Their mission is to ensure projects are not only successful but also sustainable and efficient, often serving as a crucial link between clients, contractors, and other stakeholders.

Projects that Count & Cooper undertakes are the renovation of the quay walls in the center of Amsterdam, the widening of the A9 and multiple projects in and surrounding Amsterdam Central Station.

What sets Count & Cooper apart is their focus on collaboration and building strong project organizations. They employ a unique approach that seamlessly integrates technical and organizational aspects. With an emphasis on innovation and digitalization, they help clients streamline processes, manage risks, and maximize value. Count & Cooper is known for its practical solutions and strategic insights, making them a trusted partner for both the public and private sectors.



Interested in working at Count & Cooper Nederland? Scan the QR-code to view available vacancies.



Croes Bouwtechnisch Ingenieursbureau

Branch

Architecture, Built Environment and
Construction

Classification

- AUDE
- USRE
- BPS
- SED
- CME
- SUMT
- SMDSA
- BT
- CT

HQ Location

Nijmegen

Employees

45

Visiting address

Kerkenbos 1006
6546 BA
Nijmegen

Contact person

Lars Croes

0243721919

lc@croes.nl

<http://www.croes.nl>

[linkedin.com/company/croes-bouwtechnisch-ingenieursbureau](https://www.linkedin.com/company/croes-bouwtechnisch-ingenieursbureau)



croes

Bouwtechnisch Ingenieursbureau

Ingenieursbureau Croes stands for integrated solutions that seamlessly connect construction technology and architecture. With almost 70 years of experience and a multidisciplinary team of 45 experts in the field of Architecture, Engineering and Construction, we strive for innovative and sustainable designs. Our mission is to create buildings that are not only functional and aesthetic, but also focus on the user experience.

At Croes we believe in a process-oriented approach, where we carefully manage every phase of the design process. We go through clear steps and monitor the (financial) feasibility. Our approach is based on open and interactive collaboration with our clients and users, resulting in buildings that perfectly meet their needs and ambitions. An integrated working method enables us to solve complex challenges in an efficient and transparent manner. This is supported by our 3D/BIM working method, with which we streamline project communication and clearly record agreements.

Our portfolio is extensive and consists of a wide range of projects, including commercial buildings, educational buildings and residential buildings.



We do this both in the form of new construction and in transforming an existing object into, for example, offices, homes or a cultural program. Great reference projects are Hortus Ludi in Nijmegen (residential), the Bastion-zuid in 's-Hertogenbosch (office), and De Vasim in Nijmegen (cultural center).

Interested in working at Croes? Scan the QR-code to view available vacancies.



EGM Architecten BV

Branch
Architects

Classification

- AUDE
- USRE
- BPS
- SED
- CME
- SUMT
- SMDSA
- BT
- CT

HQ Location

Dordrecht

Employees

80

Visiting address

Wilgenbos 20
3311 JX
Dordrecht

Contact person

Michelle Tikkel-Cörvers

☎ 0786330660

✉ hr@egm.nl

🌐 egm.nl

🌐 [linkedin.com/egm-architecten](https://www.linkedin.com/company/egm-architecten)



EGM architects

EGM architects is one of the most innovative and knowledge-intensive architectural firms in the Netherlands. Since 1974, we have been a professional and creative force in society. We enjoy collaborating closely with our clients every day, driven by a strong sense of purpose and human connection. Together, we make a difference, which gives us a great deal of energy and satisfaction. This cooperation is a hallmark of EGM and one of the common threads running through the projects we've created over the past 50 years.

Architecture + Knowledge + Society

At EGM, we blend beauty with functionality. A building should be aesthetically inspiring, but more importantly, it must serve its purpose: supporting processes and creating a comfortable environment for its users. Society is constantly evolving, and we don't just react – we look ahead. This forward-thinking approach allows us to design spaces that meet the future needs and aspirations of our clients. We design with people in mind, always viewing a building not as an isolated object, but as an integral part of the community.



EGM architects is a fully integrated practice, bringing together all disciplines under one roof: from urban planning to interior design, from programmers to BIM managers and modellers, from cost experts to building pathologists and BREEAM specialists. We believe in the power of collaboration, mutual inspiration, and the success that comes from diverse expertise. Together with our clients, we build the right team for each project, combining knowledge and experience to deliver the best results.

Students

At EGM architects, around 90 professionals work across various fields of architecture, interior design, and construction. Dozens of projects are constantly underway in different sizes, stages, countries and across various sectors, making working at EGM dynamic and incredibly educational. We are always on the lookout for new talent and offer students a professional and diverse environment. At EGM you can grow, through the BEP, into a fully qualified architect.

Interested in working at EGM Architecten BV? Scan the QR-code to view available vacancies.



FACTA Bouwmanagement

Branch

Construction management

Classification

- AUDE
- USRE
- BPS
- SED
- CME
- SUMT
- SMDSA
- BT
- CT

HQ Location

Veldhoven

Employees

20-50

Visiting address

Heiberg 4
5504 PB
Veldhoven

Contact person

Daniëlle Melis

☎ (040) 255 3050

✉ facta@factabm.nl

🌐 factabm.nl/

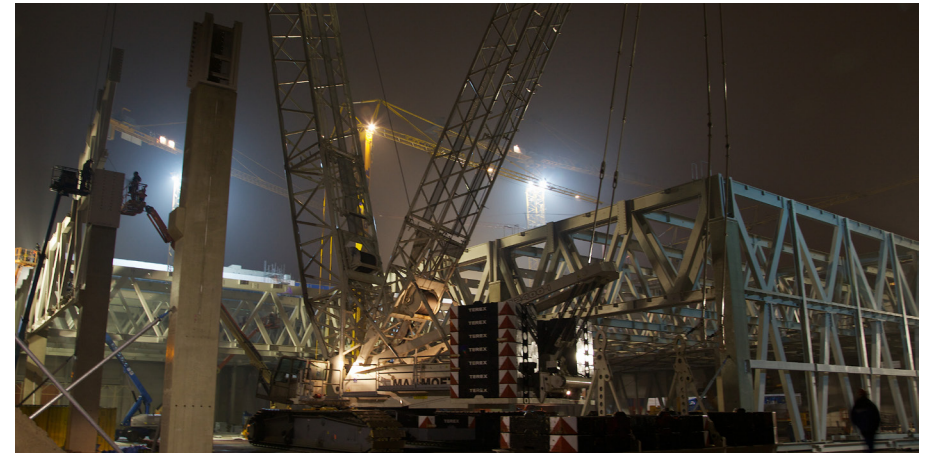
🌐 [linkedin.com/company/
facta-bouwmanagement-bv/](https://www.linkedin.com/company/facta-bouwmanagement-bv/)



FACTA Bouwmanagement has over thirty years of experience in construction management. Since 1992, we have been guiding large and small design and construction projects by continuously monitoring project costs, planning, and quality. We support our clients with services such as housing consultancy, project management, executive management, construction supervision, and other related solutions.

Our clients include national and international companies in the high-tech sector, retail, and industry, as well as project developers, government institutions (e.g., municipalities), healthcare organizations, and institutional investors. Regardless of whom we work for, engagement is one of our core values.

Building, renovating, or remodelling takes time and energy. We delve into our clients' needs and support them from the initial idea to successful project delivery. Our clients can always count on our expertise, commitment, and enthusiasm. We assist them by providing well-founded advice, enabling them to make informed decisions. Collaboration is central to everything we do - both in our projects and within our own organization. Internally, we work together as a team, supporting, helping,



and advising each other to achieve our clients' goals. We expect the same level of collaboration from our external project partners, design teams, and construction teams. We believe in the power of teamwork, ensuring the team's effectiveness is maximized. FACTA Bouwmanagement is based in a modern office building in Veldhoven, easily accessible by car and public transport. The team consists of over 20 employees, each contributing personally to shaping FACTA Construction Management's growth objectives.

Are you ready to start your career within a young, dynamic team with plenty of growth opportunities and do you have an excellent command of the Dutch language, both spoken and written? Then visit our website for vacancies, and who knows, we might soon enjoy a cup of coffee together!

Interested in working at FACTA? Scan the QR-code to view available vacancies.



Goudstikker - de Vries

Branch

Structural Design

Classification

- AUDE
- USRE
- BPS
- SED
- CME
- SUMT
- SMDSA
- BT
- CT

HQ Location

's-Hertogenbosch

Employees

90

Visiting address

Stadionlaan 81
5213 JJ
's-Hertogenbosch

Contact person

Wessel Manders

+31 6 10055050

w.manders@goudstikker.nl

goudstikker.nl

linkedin.com/company/goudstikker-de-vries-b.v.



At Goudstikker-de Vries we offer you a working environment in which you can accelerate. We are an ambitious team, with a treasure of knowledge about engineering. Knowledge that we are happy to pass on to you. Whether you work as a consultant, constructor or BIM-specialist, your knowledge and experience contribute to achieving the best possible result. We go to great lengths to understand our customer's wishes. A collaboration always starts with the design in mind. Together we create value by offering constructive and architectural solutions. Our 'architectural heart' beats faster when it comes to constructive challenges or complex works in difficult locations. The requirements we set for our work require certain competencies that we are looking for in new colleagues.

What you deliver will soon be visible in a city, village or residential area. Not just for yourself, but for everyone. Users, residents or passers-by, everyone looks at beautiful buildings and creative constructions with admiration and respect, right? At Goudstikker-de Vries you get the chance to participate in this. This only makes our work more fun and interesting. Working at Goudstikker-de Vries means challenging work,



good career opportunities and excellent employment conditions. With us you become part of a team of professionals and within this we value every individual. We create an environment that ensures that you can enjoy your work every day and achieve your personal goals.

If regular working from home suits you better because of the travel time, then that is possible. Just like using parental leave because you have or will have a busy family life. We are happy to think along with you about the employment contract that best suits your current stage of life. We are involved with each other.

Our lively staff association organizes fun activities and anniversaries and of course keeps all important events in its sights. Think for example of birthdays, moving house, weddings or the birth of a baby. Personal milestones deserve extra attention and should be celebrated.

From day one, we offer you plenty of room for your development within Goudstikker-de Vries, where you will receive excellent guidance. We pay a

lot of attention to the development and training of our employees in order to continue to guarantee the quality of our work. We work on this through a training, course or education. This makes it possible to continuously immerse yourself in your field, to develop yourself and to work on your career opportunities. Regardless of your knowledge or experience level.

With our Young-Professionals Program we offer an additional internal training program through informative lunch lectures, sharing knowledge and experiences or visiting a construction site. Together we discover what you are good at and what you like to do. A long-term and pleasant working relationship is created by letting you do the work that suits you best.

If you would like some more information or want to have a little chat please contact us!

Interested in working at Goudstikker de vries? Scan the QR-code to view available vacancies.



HaskoningDHV Nederland BV

Branch
Architects, Engineers & Consultants

Classification

- AUDE
- USRE
- BPS
- SED
- CME
- SUMT
- SMDSA
- BT
- CT

HQ Location

Amersfoort

Employees

6000

Visiting address

Larixplein 1
5616 VB
Eindhoven

Contact person

Peggy van de Pas

☎ 088-3484205

✉ peggy.van.de.pas@rhdhv.com

🌐 royalhaskoningdhv.com

🌐 [linkedin.com/company/
royal-haskoningdhv](https://www.linkedin.com/company/royal-haskoningdhv)



Royal HaskoningDHV is an independent consultancy which integrates 140 years of engineering expertise with digital technologies and software solutions. As consulting engineers, we care deeply about our people, our clients and society at large. Through our mission Enhancing Society Together, we take responsibility for having a positive impact on the world. We constantly challenge ourselves and others to develop sustainable solutions to local and global issues related to the built environment and the industry.

Change is happening. And it's happening fast – from climate and digital transformation to customer demands and hybrid working. The speed and extent of these changes create complex challenges which cannot be addressed in isolation. New perspectives are needed to accommodate the broader societal and technological picture and meet the needs of our ever-changing world.

Backed by the expertise of over 6,000 colleagues working from offices in more than 20 countries across the world, we are helping organisations to turn these challenges into opportunities and make



the transition to smart and sustainable operations.

We do this by seamlessly integrating engineering and design knowledge, consulting skills, software and technology to deliver more added value for our clients and their asset lifecycle.

We act with integrity and transparency, holding ourselves to the highest standards of environmental and social governance. We are diverse and inclusive. We will not compromise the safety or well-being of our team or communities – no matter the circumstances.

We actively collaborate with clients from public and private sectors, partners and stakeholders in projects and initiatives. Our actions, big and small, are driving the positive change the world needs, and are enhancing society now and for the future. Our head office is in the Netherlands, and we have offices across Europe, Asia, Africa, Australia and the Americas.

Interested in working at Royal Haskoning DHV? Scan the QR-code to view available vacancies.



Heijmans

Branch

Construction and Infrastructure

Classification

- AUDE
- USRE
- BPS
- SED
- CME
- SUMT
- SMDSA
- BT
- CT

HQ Location

Rosmalen

Employees

5000

Visiting address

Graafsebaan 65
5248 JT
Rosmalen

Contact person

Elisa de Klerk

+31 6 50179747

eklerk@heijmans.nl

heijmans.nl

linkedin.com/company/heijmans/



Heijmans is a versatile company in which real estate, housing, utilities (construction, mechanical engineering and electrical engineering) and infrastructure (roads and civil engineering) work together. Do you want to contribute to sustainably build the contours of the Netherlands? Then come work at Heijmans and build projects like highways, universities, bridges, hospitals and apartment complexes. Our projects are located across the country. Think for example of knooppunt Nieuwe Meer on the Zuidas or the build of the new student housing on the TUE Campus. Within Heijmans you are contributing to the entire process of realizing a project. From engineering to construction to the maintenance. That is what makes working at Heijmans diverse and super interesting. With approximately 5000 colleagues, we are one of the largest construction companies in the Netherlands and we take our role seriously. We strive towards creating a healthy living environment for all. Together we create beautiful sustainable projects of lasting value, for our customers and for society. It's what determines our success.



Interested in working at Heijmans? Scan the QR-code to view available vacancies.



HEVO

Branch

Project management and consultancy

Classification

- AUDE
- USRE
- BPS
- SED
- CME
- SUMT
- SMDSA
- BT
- CT

HQ Location

's-Hertogenbosch

Employees

120

Visiting address

Statenlaan 8
5223 LA
's-Hertogenbosch

Contact person

Marijke Schilderspel

+31 6 10891073

marijke.schilderspel@hevo.nl

hevo.nl/

linkedin.com/company/hevo



HEVO strives for the best housing for work, education, living, and care. We are convinced that we can provide people with the opportunities to achieve their goals and improve their quality of life. Therefore, we work on buildings and areas that we develop and manage sustainably. A healthy work and living environment enhances the well-being and performance of the users of buildings and areas.

From our offices in 's-Hertogenbosch and Zwolle, we assist organizations across the country with their housing challenges. We do this by providing strategic advice, organizing and guiding the entire (re)construction process, all the way through to delivery and subsequent monitoring.

What drives us

We stand for an approach that is people-oriented, inventive, and results-driven. In this way, we work on buildings and areas that we develop and manage sustainably. We are convinced that a healthy work and living environment improves the well-being and performance of the users of buildings and areas. Our philosophy is:

Buildings influence the well-being of their users; housing can inspire and make people happier and more productive.



Our passionate experts bring dreams and ambitions to life. Sustainable housing is in our DNA. We have a clear vision on sustainability, circular construction, and safety. Our strength lies in our extensive experience and expertise in-house, which allows us to form multidisciplinary teams and tackle complex projects. From advice to project management: we provide result guarantees, which is unique in the Netherlands. We truly take responsibility and do what we promise.



Interested in working at HEVO? Scan the QR-code to view available vacancies.



ICSadviseurs BV

Branch
Construction Consultancy

Classification

- AUDE
- USRE
- BPS
- SED
- CME
- SUMT
- SMDSA
- BT
- CT

HQ Location
Zwolle

Employees
128

Visiting address
Van Nelleweg 1
3044 BC
Rotterdam

Contact person
Robert van Kasteel

+31 6 82480540

recruitment@icsadviseurs.nl

icsadviseurs.nl

linkedin.com/company/icsadviseurs



ICSadviseurs – Inspired housing consultants since 1955
“Children – and not bricks – should be the starting point of every building process”.

About 65 years ago, there was a strong increase of population in the Netherlands. At that time, the number of schools seemed to matter more than the quality of the learning environment. School supervisors from the Ministry of Education and private school boards came together to discuss the situation. Their idea was that a well-defined educational vision would result in learning environments that enhanced the quality of education and the well-being of teachers, students and community. This led to the founding of ICS: “Information Centre for Schoolbuilding”. Since then, the Netherlands has made great progress in the development of innovative learning environments. Nowadays, we help our clients to realise their educational vision by providing advice and assistance at every stage of the building process. The result: a healthy, sustainable, flexible, efficient and inspiring learning environment.



Interested in working at ICSadviseurs B.V.? Scan the QR-code to view available vacancies.



KAW architecten & adviseurs

Branch

Architecture, Urban Planning/
Strategies & Research

Classification

- AUDE
- USRE
- BPS
- SED
- CME
- SUMT
- SMDSA
- BT
- CT

HQ Location

Groningen

Employees

100

Visiting address

Rechtestraat 59C
5611 GN
Eindhoven

Contact person

Marjo Struif Bontkes

+31 (0) 885290000

personeelszaken@kaw.nl

kaw.nl/

linkedin.com/company/
kawarchitecten/



KAW is an architectural company of designers, researchers and advisors, with an eye for people and the society we live in. Everyone has the right to a pleasant and healthy life. A comfortable house and a good living environment are essential, but sadly this is as of yet not accessible for everyone. That is why we committed ourselves to working on equity in a society that is both ecologically sustainable and socially just.

We achieve this by implementing innovative living concepts for people who are in need of help and/or healthcare, designing sustainable and affordable housing, and building/renovating without emitting harmful materials. From the ecocentric perspective we foster the well-being and health of the residents.

At KAW we work towards integral plans for the future that make good and healthy living, work environments and society as a whole, accessible for the residents of today and generations to come.

Our goal is considerable and achievable by connecting social, physical and economic changes and issues. That's why we work on a multidisciplinary plane and processes concerning change.



We create the bridge between professionals and residents by viewing apparent complex issues as one, combined assignment. We bring together architects and urban designers, data- and housing market research, process management and advise. To create positive change together with the people.

Interested in working at KAW architecten & adviseurs? Scan the QR-code to view available vacancies.



Koninklijke BAM Groep NV

Branch

Construction and Infrastructure

Classification

- AUDE
- USRE
- BPS
- SED
- CME
- SUMT
- SMDSA
- BT
- CT

HQ Location

Bunnik

Employees

8000

Visiting address

Runnenburg 9
3980 CA
Bunnik

Contact person

Suzanne Haartman

+31 6 31944239

suzanne.haartman@bam.com

bam.com/nl

[linkedin.com/company/bam-nederland/](https://www.linkedin.com/company/bam-nederland/)



What if we don't just build structures but also a sustainable future? As one of the largest construction companies in Europe, we go beyond developing essential infrastructure and delivering high-quality buildings. With our strategy 'building a sustainable tomorrow,' we are committed to creating a sustainable future. We can't achieve this without you.

We provide an inspiring work environment where your talents can thrive. BAM is the place to start your career and discover what energizes you. Will you use your expertise to construct much-needed new housing, or would you rather focus on technical management and maintenance? There are projects all over the country where you can contribute—ranging from road construction and rail infrastructure to underground utilities.

Additionally, you can be involved in all phases of the construction process, from the design phase to final delivery, as well as management and maintenance. Together, we are building a sustainable future with safety and innovation as our top priorities.

What if you join BAM?



Interested in working at BAM Nederland? Scan the QR-code to view available vacancies.



KWK Huisvestigingsregisseurs

Branch

Housing/ Real Estate/ Project Management

Classification

- AUDE
- USRE
- BPS
- SED
- CME
- SUMT
- SMDSA
- BT
- CT

HQ Location

Rotterdam

Employees

28

Visiting address

Weena 723 (C7.077)
3013 AM
Rotterdam

Contact person

Jeroen van Kessel

+31 6 21169708

info@kwkbv.nl

kwkbv.nl

linkedin.com/company/
kwkhuisvestigingsregisseurs



Who are we?

KWK Huisvestigingsregisseurs is a dynamic, independent consultant agency with integrated services for realisation, design, renovation and maintenance of real estate.

At KWK, we are all 'huisvestigingsregisseurs' (housing directors). Because the core of our work is always the same: we unburden by taking control of the process. For each relationship and for each question, the interpretation of that role is always different.

We are a real and close team. By working together in teams, we learn a lot from each other. We are versatile and each of us has our own specialism. One has more affinity with housing advice and the other is a strong project manager. Because we know each other's strengths, we know who to ask for help for what project.

Take a look at <https://kwkbv.nl/over-ons/> to meet the KWK employees!

KWK has a focus within its services on social real estate and we are active on projects within the fields of education, security, government and healthcare & living.

Take a look at our website to find out more about the projects we work on: <https://kwkbv.nl/projecten/>



Our ambition

We currently employ around 28 staff at KWK. Our main office is in the 'Groot Handelsgebouw' in Rotterdam. We also have a branch in 'Het Blushuis' in Breda and will open a branch in Amsterdam later this year. Our ambition is to grow to 30-40 employees in the coming years. We are therefore always looking for new talent! Would you like to strengthen our team with your knowledge? You are always of substantial importance to a project and you have many development opportunities and independence. Moreover, your colleagues are also your coach. We look forward to getting in touch with you!

Besides growth in employees, our ambition is always to keep growing in projects within social real estate. At KWK, we have a clear vision of how we want to take our projects forward. Users of buildings and their work, behaviour and culture are key in this. At KWK, we think sharing knowledge and personal development are very important. This is why we have created the KWK Academy. As part of the KWK Academy, every 6-8 weeks we organise a knowledge session on a



particular topic related to our work. Sometimes it is a colleague who knows a lot about a particular subject and likes to share that with the other colleagues, and sometimes we ask an external party to enrich our knowledge. Besides knowledge sessions and personal development, we also like to do other fun things with our colleagues: an afternoon of pool after a morning of sharing knowledge, a bike ride through Rotterdam along our beautiful projects, a teambuilding outing at Adventure Valley and of course our annual Christmas dinner with our partners. In short, we think relaxation after strenuous projects is at least as important!



Interested in working at KWK? Scan the QR-code to view available vacancies.



Mei Architects and Planners

Branch
Architecture

Classification

- AUDE
- USRE
- BPS
- SED
- CME
- SUMT
- SMDSA
- BT
- CT

HQ Location
Rotterdam

Employees
25

Visiting address
Schiehavenkade 150
3024 EZ
Rotterdam

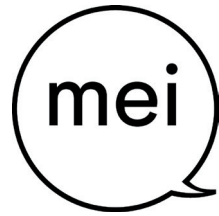
Contact person
Carmen Aanen-Meuldijk

☎ 010-4252222

✉ c.aanen@mei-arch.eu

🌐 mei-arch.eu

🌐 [linkedin.com/company/mei-architects-and-planners/](https://www.linkedin.com/company/mei-architects-and-planners/)



Internationally operating and award-winning architectural firm in Rotterdam with broad expertise in the field of repurposing, urban development strategies and innovative new construction concepts.

Just like in our buildings, people are also central within our organization. We want to be able to build with and on each other. Do you prefer to work alone, unhindered by the opinions of others? Then Mei is the wrong place for you. We believe – no, we know – that together you can achieve better solutions. That is why connecting and collaborating are the foundation of our company. We work in teams in which everyone contributes their unique bit...



Interested in working at Mei Architects and Planners? Scan the QR-code to view available vacancies.



Movares

Branch

Civil Engineering

Classification

- AUDE
- USRE
- BPS
- SED
- CME
- SUMT
- SMDSA
- BT
- CT

HQ Location

Utrecht

Employees

1250

Visiting address

Daalseplein 100
3511 SX
Utrecht

Contact person

Sander Looijen

+31 6 25164513

sander.looijen@movares.nl

movares.com

linkedin.com/company/movares/



At Movares, we do things differently. We work on smart solutions that make life easier, often without you even noticing. Faster, more sustainable, and more digital – for today and tomorrow!

Leading the next generation of infrastructure

The Netherlands faces significant societal and spatial challenges, such as climate change, urbanization, and the energy transition. These challenges affect us all and require a completely new approach. If we continue as we have been, we won't be ready for tomorrow. It needs to be smarter, faster, more sustainable, and more effective. We develop future-oriented solutions for challenges in planning and conditioning, energy, infrastructure and water, rail, and buildings. Sustainable solutions that shape the world of today and tomorrow: we are leading the next generation of infrastructure.

Creating solutions differently, together
To improve tomorrow's infrastructure, digitalization, innovation, and collaboration are indispensable. By rethinking the supply chain, embracing digitalization, creating new solutions, and working together more intelligently, we make it happen.



Interested in working at Movares? Scan the QR-code to view available vacancies.



Nebest BV

Branch

Construction, infrastructure, industry and hydraulic engineering

Classification

- AUDE
- USRE
- BPS
- SED
- CME
- SUMT
- SMDSA
- BT
- CT

HQ Location

Vianen

Employees

270

Visiting address

Marconiweg 2
4131 PD
Vianen

Contact person

Wouter van den Berg

☎ (085) 489 0100

✉ info@nebest.nl

🌐 nebest.nl/

🌐 [linkedin.com/company/nebest-adviesgroep](https://www.linkedin.com/company/nebest-adviesgroep)



We are Nebest!

An independent engineering / consulting firm, specializing in inspection, in-depth technical research and consultancy as well as project management in construction, infra, industry and hydraulic engineering.

Assetmanagement is in our DNA and has been embedded within the organization since its establishment in 1988 with Nebest's role in the creation of risk-based inspection and management. In the year 2025 we serve a wide variety of clients within the entire technical sector from our centrally located Vianen office with over 270 employees. This way, we contribute daily to a sustainable and structurally safe built environment.



Interested in working at Nebest? Scan the QR-code to view available vacancies.



Nelissen Ingenieursbureau

Branch

Building Physics and Installation
technology

Classification

- AUDE
- USRE
- BPS
- SED
- CME
- SUMT
- SMDSA
- BT
- CT

HQ Location

Eindhoven

Employees

75

Visiting address

Larixplein 7 - gebouw 2
5616 VB
Eindhoven

Contact person

Margo van den Eijnde

(040) 248 46 56

m.vandeneijnde@nelissenbv.nl

nelissenbv.nl/

linkedin.com/company/nelissen-ingenieursbureau-bv



Who are we?

Nelissen ingenieursbureau, established in Eindhoven, is an engineering firm in the field of mechanical engineering, electrical engineering, building physics, acoustics, fire safety and sustainability. We work together with leading architects and various clients such as large educational institutions, municipalities, and real estate organizations. With our mission 'smart sustainable solutions for people in buildings' we provide integrated advice to ensure that a building performs optimally. We work with 65 enthusiastic professionals on a range of very diverse projects. The versatility of our agency is characteristic and therefore distinctive compared to our competitors.

Our people

The employees of Nelissen ingenieursbureau are highly educated and experienced. Our job satisfaction is high and noticeable. In addition, our team has qualities that also determine the success of our projects, such as flexible, proactive, enthusiastic, motivated and pleasant to work with. We employ TU engineers, HBO graduates and MBO graduates with a background in building physics, mechanical engineering, electrical engineering, physics, construction or energy technology.



Integration

The integration between installations and building physics is a strong point and our people look beyond their own field. Mutual cooperation and a good atmosphere are very important, which ensures that a pleasant working and learning environment has been created within Nelissen ingenieursbureau. As an intern or starter at Nelissen, your interests and the guidance that matches these interests will be taken into account. From the start you will participate in various projects that will broaden your knowledge and from there you can specialize further.

Want to know more?

Are you interested in Nelissen ingenieursbureau? You can find more

information about our company, our projects and vacancies on our website. We have various internship and graduation options and offer possibilities for a part-time job or a starter position. You can reach us by phone on 040 248 46 56 or email Sanne Gall (HR) at s.gall@nelissenbv.nl



Interested in working at Nelissen? Scan the QR-code to view available vacancies.



OPPS BV

(Extra company, not present at the events)

Branch

Construction management

Classification

- AUDE
- USRE
- BPS
- SED
- CME
- SUMT
- SMDSA
- BT
- CT

HQ Location

Houten

Employees

7

Visiting address

Het Kant 3
3995 DZ
Houten

Contact person

Martijn Zuurveld

+31 6 11325505

info@opps.nl

opps.nl

linkedin.com/company/opps



OPPS

OPPS specializes in public-private partnerships for complex housing and construction projects. We mainly focus on utility construction, but we are also involved in various residential housing projects and urban landscaping. We guide and support public and private parties before, during and after tender procedures. Due to the large variety of services that we offer, we contain a diverse knowledge base. This enables us to identify and understand the interests of all involved stakeholders, so that we may advise our clients in the most integrated and complete sense. Our mission: To contribute to the sustainable transformation of our built environment by offering smart and innovative partnership solutions.

Our services

We advise and guide our clients in every phase of the construction process, from first initiative to operational phase. We collaborate with clients about the feasibility, prerequisites and scope of the construction project. We advise on the public procurement strategy, develop ambition documents, requirement- and demand specifications, supervise the procurement procedure (guidelines, contracts) and provide quality- and process management. We consult our clients within the privatized sector, such as contractors and architects, with tender



strategies, qualitative plans of operation and quality- & risk management.

Our projects

OPPS has a diverse portfolio of activities. We provide our services to public sector organisations such as the national government, provinces, municipalities and healthcare and educational institutions. We also consult the privatized market such as construction and installation companies, developers, architects and property owners. With our specific experience and knowledge of the industry, we offer custom solutions to all of our clients.

Sustainability

In all our services sustainability is an important factor. Besides sustainability legislation being a prominent incentive for public organisations to transform their property portfolio, it is also an indispensable theme for new construction projects. Hence, we are always searching for ways to incorporate sustainable solutions into the models of cooperations that underpin our projects. We strive for the stimulation of circular economy, the use of green energy, energy efficiency and environment- and water conservation. These goals translate to our day-to-day decisions and methods of approach for all projects. We have our in-house sustainability specialist and



confer frequently with the sustainability specialists of our clients.

Our team

We are a team of expert and committed advisors. We are both generalists, in that we are a Jack-of-all-trades within our field, and specialists, as each consultant has his or her own speciality. Besides our professional side, our relatively small team is very close. We have several team bonding activities throughout the year, such as dinners and the occasional drink. Once a year we even go skiing together!

Are you curious and ambitious? Do you want to help our clients find the right approach and solution for complex procurement procedures and tenders? At OPPS you get the unique opportunity to work on the most beautiful new construction and renovation/transformation projects together with governments, the best contractors and the smartest architects in the Netherlands.

Contact us for a meet and greet or a cup of coffee!

Interested in working at OPPS BV? Scan the QR-code to view available vacancies.



Pieters Bouwtechniek BV

Branch
Structural Engineering

Classification

- AUDE
- USRE
- BPS
- SED
- CME
- SUMT
- SMDSA
- BT
- CT

HQ Location
Utrecht

Employees
200

Visiting address
Reactorweg 47
3542 AD
Eindhoven

Contact person
Patricia van Someren

☎ (030) 2870531

✉ Info.utrecht@pieters.net

🌐 pietersbouwtechniek.nl

🌐 [linkedin.com/company/pieters-bouwtechniek-bv/](https://www.linkedin.com/company/pieters-bouwtechniek-bv/)



Pieters Bouwtechniek specialises in structural engineering. Our primary goal is a safe, functional and integral design for a building that meets the requirements and wishes of both the client and the user. We work on varied assignments for universities, research institutes, architects, municipalities, housing associations, building contractors with a real estate development division, private individuals and project developers. We are actively involved and advise the client from the design phase up to and including completion and handover. Pieters is able to create the optimal structural design.



Interested in working at Pieters Bouwtechniek? Scan the QR-code to view available vacancies.



Powerhouse Company International BV

Branch
Architecture

Classification

- AUDE
- USRE
- BPS
- SED
- CME
- SUMT
- SMDSA
- BT
- CT

HQ Location
Rotterdam

Employees
43

Visiting address
Antoine Platekade 1000
3072 ME
Rotterdam

Contact person
Annemieke Verschuren

(010) 404 6789

annemieke@powerhouse-
company.com

powerhouse-company.com/

linkedin.com/company/
powerhouse-company/



POWERHOUSE COMPANY

We are Powerhouse Company, an international architectural firm rooted in the heart of Rotterdam, the Netherlands, with offices in Oslo and Munich. Since our establishment in 2005, we've grown into a vibrant, multidisciplinary team with talented professionals. With a portfolio of internationally recognized and award-winning projects, we offer an opportunity to gain valuable insights and expertise that will empower your professional growth and future career success.



Interested in working at
Powerhouse Company?
Scan the QR-code to view
available vacancies.



Republiq

Branch

Consultancy, Public Real Estate

Classification

- AUDE
- USRE
- BPS
- SED
- CME
- SUMT
- SMDSA
- BT
- CT

HQ Location

's-Hertogenbosch

Employees

40

Visiting address

Hinthamereinde 73d
5211 PM
's-Hertogenbosch

Contact person

Wouter van der Does

(073) 8512623

werkenbij@republiq.nl

republiq.nl/

linkedin.com/company/
republiq/



REPUBLIQ

Making impact in public real estate
Together, we build the best and coolest real estate consulting firm of The Netherlands. We want to professionalise the real estate sector with innovative solutions.

We believe we can become game changers in the sector by using available data sources. We create the best conditions so that everyone can excel in their specific field. We believe if everybody does what they're good at, we achieve the best results. That starts by working hard and, above all, having a lot of fun.

Game changers in the sector
A new era within the real estate industry has occurred. By using data we become game changers in the sector. Data is fundamental for every real estate-related decision. That's why Republiq consists of 50% real estate advisors and 50% data scientists. This combination makes us unique from others: figures only come to life if you know what world lies behind

Choose your own focus
At Republiq we believe in mastery. We set the bar high for ourselves, our customers and the industry. And that starts with yourself. Choose what you



are good at and become the very best at it. Taste all the possibilities within Republiq, but choose your own focus. We do not have teams or departments in which you will work. You're going to do what you like. We are confident it will be a success.

Great Place to Work ®
We have been a Great Place to Work ® for 7 years in a row.

Interested in working at Republiq? Scan the QR-code to view available vacancies.



RoosRos Architecten

Branch

Architecture

Classification

- AUDE
- USRE
- BPS
- SED
- CME
- SUMT
- SMDSA
- BT
- CT

HQ Location

Oud-Beijerland

Employees

60

Visiting address

Laurens Janszoon Costerstraat 2
3261 LH
Oud-Beijerland

Contact person

Henk de Gelder

☎ (018) 6691580

✉ info@roosros.nl

🌐 roosros.nl/

🌐 linkedin.com/company/
roosrosarchitecten/



We are RoosRos Architects, a firm driven by passion for architecture. Every day, our team of over sixty colleagues works tirelessly to deliver sustainable and innovative solutions in architecture. At RoosRos, we are more than just a workplace; we are a community united by a shared vision of creating meaningful, forward-thinking spaces.

Joining our team means becoming part of a professional, ambitious, and dynamic group of colleagues. We warmly welcome new talent, and we place great value on openness, collaboration, and continuous personal development. Whether you are an intern, a recent graduate, or an early-career professional, you will be a vital part of our organization, contributing to projects that have a real impact.

At RoosRos, we believe in nurturing passion. Our firm is a learning organization that thrives on innovation and teamwork to shape a healthier, more sustainable environment. Through the RoosRos Academy, we provide initiatives that support our ongoing growth in the field of architecture. We are committed to stimulating the potential and ambition of our colleagues, and we strive to bring out the best in everyone we work with.



For recent graduates, we encourage you to explore opportunities like the PEP (Professional Experience Program) as a steppingstone in your career. As part of our team, you will have the space and support to grow, explore, and refine your skills.

If you're interested in an internship, or if you've recently graduated and are looking to start your professional journey, we'd love to hear from you!

Get in touch with us—we're eager to meet you and learn how you can contribute to our vision. Apply through our website and take the first step toward an inspiring and fulfilling career at RoosRos Architects.

Interested in working at RoosRos? Scan the QR-code to view available vacancies.



RYSE

Branch

Consultancy & Project/Process Management

Classification

- AUDE
- USRE
- BPS
- SED
- CME
- SUMT
- SMDSA
- BT
- CT

HQ Location

Utrecht

Employees

100

Visiting address

Hondiuslaan 46
3528 AB
Utrecht

Contact person

Marsja van Orsouw

☎ 088-0215330

✉ info@ryse.nl

🌐 ryse.nl

🌐 linkedin.com/company/rysebv/



Adviseurs in vastgoed
strategie | ontwikkeling | realisatie

Everyday our consultants and project managers create future-oriented solutions for living, working and learning environments together with our clients. We realise the ambitions of our clients and enable them to stay on top of the development process. Our people always aim for the best possible results, preferably taking it even one step further. In this way, we help make the real estate industry a better place, every day.

We are a successful company that is contributing to high-profile buildings and areas. WTC Amsterdam, microcity "Het Platform", Forum Groningen, Werelderfgoedcentrum Waddenzee, redevelopment of V&D Eindhoven and the city hall in Utrecht are some examples of projects we are proud of!

At RYSE, we take pride in our expertise and our skills. Our dynamic organisation is founded on experienced consultants and project and process managers. We offer our employees the kind of working and learning environment that nurtures their talents and curiosity. For instance, we organise many knowledge sessions with both in-house and external experts.



Young Talent Program

RYSE is always on the look-out for people who are passionate about their profession. People who get up in the morning determined to make a difference and make our built environment more beautiful and more clever. If you join our team as a young, ambitious and enthusiastic talent you will

participate in the Young Talent Program. This is a development program in which you work on broad professional knowledge, personal skills and effectiveness. You will also automatically become a member of Young RYSE, run by and for junior project managers. Young RYSE focuses on internal and external networking and knowledge sharing with lots of room for fun activities.

Kickstart your career at RYSE

Do you want to experience for yourself what it is like to work in the dynamic world of project management and



kickstart your career? We always welcome graduates, trainees and working students. Contact us for the possibilities! At RYSE, we encourage people to excel at the individual level, but we also encourage them to become great team players.

Interested in working at RYSE? Scan the QR-code to view available vacancies.



SKS Group B.V.

Branch
Structural Design

Classification

- AUDE
- USRE
- BPS
- SED
- CME
- SUMT
- SMDSA
- BT
- CT

HQ Location
Herten-Roermond

Employees
35

Visiting address
De Hanze 10b
6049 HZ
Herten-Roermond

Contact person
Dhr. Dirk Derikx

☎ 088-5050800

✉ info.roermond@sksgroup.nl

🌐 sksgroup.nl

🌐 linkedin.com/in/sks-group



Adviesbureau Bouwconstructies

SKS GROUP B.V. Building Construction Consultancy consists of the companies WSM Engineering B.V., Vander Weide Van Bragt B.V., SKS Building Construction and SKS Development B.V.

WSM Engineering, as a modern structural engineering firm, WSM Engineering is dedicated to consulting on concrete, wood, steel and stone structures.

WSM Engineering has an excellent international reputation with regard to complex load-bearing structures and foundations. WSM Engineering also has specialised knowledge which is indispensable for damage assessments, geotechnical matters and building physics issues. WSM Engineering offers a comprehensive solution unlike any other in the world. A service-oriented engineering firm that enables greater freedom of design through superior knowledge and experience. WSM Engineering is the link between emotional and rational form.

Vander Weide Van Bragt, is an engineering firm specialised in designing, calculating and detailing concrete, steel and wood structures and other parts of a structure subject to a static or dynamic load. We deliver economically sound advice and designs



through a project-based approach and working method. We design, calculate and detail structures for all kinds of residential and utility buildings. We also consult on renovations, historical buildings and building damage. We strive to earn our worth as an advisor through added value by thinking along with and working for our clients in a planned manner while taking all design principles into account.

SKS Building Construction, specialized in the technical construction of system floors, hollow walls, beam floors and solid prefabricated floors. SKS Building Construction is located in Dubai and forms a bridge between Europe and East Asia. SKS Development B.V., is a project developer, with years of experience in the construction industry, that acquires, develops and builds beautiful acquires, develops and builds beautiful projects and sells or rents them.



Interested in working at SKS Group? Scan the QR-code to view available vacancies.



Sonneborgh

Branch
Real Estate

Classification

- AUDE
- USRE
- BPS
- SED
- CME
- SUMT
- SMDSA
- BT
- CT

HQ Location
Eindhoven

Employees
25

Visiting address
Schimmelt 30
5611 ZX
Eindhoven

Contact person
Ruud de Louw

 0682066545

 r.delouw@sonneborgh.nl

 sonneborgh.nl

 [linkedin.com/company/sonneborgh](https://www.linkedin.com/company/sonneborgh)



We create solutions for the most diverse challenges. Committed, transparent, and solution-oriented. Together, we invest in the society of tomorrow!

Development

For a quarter of a century, we have been developing real estate in the sectors of housing, healthcare, education, and sports. We understand the challenges faced by our clients and the needs of their target audiences. That's why we take integral responsibility: from strategy and feasibility to development, realization, and investment. This enables us to create tailor-made solutions for the most diverse projects.

Investment

Since 2015, we have been actively investing in healthcare real estate by initiating real estate investment funds for private and institutional investors. These funds feature high-quality Dutch real estate with stable and attractive returns. Our investment policy focuses on sustainable growth through targeted acquisitions of both development projects and existing properties.



Interested in working at Sonneborgh? Scan the QR-code to view available vacancies.



Stevens Van Dijck

Branch

Construction Management and Consultancy

Classification

- AUDE
- USRE
- BPS
- SED
- CME
- SUMT
- SMDSA
- BT
- CT

HQ Location

Zoetermeer

Employees

39

Visiting address

Boerhaavelaan 24
2713 HX
Zoetermeer

Contact person

Wilma Oosterveer

☎ 088-0024300

✉ contact@stevensvandijck.nl

🌐 <http://www.stevensvandijck.nl>

🌐 [linkedin.com/company/stevens-van-dijck/](https://www.linkedin.com/company/stevens-van-dijck/)



STEVENS VAN DIJCK

Who we are

As an independent construction management, housing and real estate consulting firm, we work for a wide range of national and international clients.

The client's question and situation are always the starting point. With a broad range of services, we fulfill roles as team captain, experienced guide, critical thinker and committed collaborative partner. We go far in looking for possibilities, always in relation to the client's wishes and requirements.

Building is always serving, focused on the well-being and functioning of people. We use our expertise in the best interest of the client. Our commitment is to achieve better buildings.

Sustainable construction is important to us and always obvious in our efforts to make a building better in terms of function, efficiency and future value. Because so much is now possible in terms of sustainability. We implement corporate social responsibility as concretely as possible. By incorporating circular construction into projects. Even in our own actions, including travel behavior and use of materials, we strive to minimize our footprint.



What we stand for

With our organization, we nurture a professional community where people feel at home because of shared values about building and working together. We love to challenge and inspire people – employees and clients. We can learn from each other. The premise of every assignment is that we get better together. We respect each other and each other's interests and differences, the basis for cooperation is what binds us and brings us together. A Healthy return is not an end in itself. It serves the continuity of our organization and what we can continue to do.

Stevens Van Dijck as an employer

Professionals who endorse and embrace our values are welcome in our organization. We regularly have vacancies at all levels, from intern and fresh graduate to senior experience level. If you want to commit to hugely varied projects and continue your development, then read more about your career opportunities at Stevens Van Dijck.

Better buildings

Better buildings are sustainable, energy neutral and a healthy environment for people. Better buildings are serviceable and functional, cost-effective and maintainable. Better buildings demonstrate responsibility, preserve their value and are future-proof. Better buildings – are circular.

On the occasion of our 25th anniversary in 2017, we launched Beteregebouwen.nl together with LBP|SIGHT. This platform highlights and explores the broad theme of circular building from multiple angles through the sharing of articles, interviews, success stories and instructive projects. Our aspiration is to actually make the world more circular. Its necessity cannot be ignored, and it also offers countless opportunities. Our aspiration is to actually make the world more circular. Its necessity cannot be ignored, and it also offers countless opportunities.

Interested in working at Stevens Van Dijck? Scan the QR-code to view available vacancies.



SVP

Branch
Architecture and Urbanism

Classification

- AUDE
- USRE
- BPS
- SED
- CME
- SUMT
- SMDSA
- BT
- CT

HQ Location

Amersfoort

Employees

50

Visiting address

't Zand 17
3811 GB
Amersfoort

Contact person

Anouk van Dongen

+31 33 4701188

info@svp-svp.nl

svp-svp.nl

linkedin.com/company/svp-architectuur-en-stedenbouw



SVP

We are an office of about fifty architects and urban planners, based in the centre of the Netherlands (Amersfoort). At SVP Architectuur en Stedenbouw everything revolves around creating living environments that connect, inspire and strengthen people. Whether it is a school, a residential area, a care institution or a public space, we put the user at the centre of our design, to add meaning to the environment and the lives of its users.

Projects we work on

Our portfolio projects are diverse and make a difference. Think of innovative schools where learning and sustainability go hand in hand, for example, International School in Utrecht. In this healthy learning environment, children from all over the world can easily interact with each other. Another example would be care environments where well-being and comfort are key. But also, ambitious urban development plans that lay a sustainable foundation for future generations. A recent example of such a lively residential area that encourages interaction is BuitenStad Hoor - a high-density urban district where the residents feel the connection with nature while living in a dynamic city district. We constantly keep an eye on circular, innovative and sustainable solutions



at both architectural and urban scale. For us, sustainability goes beyond saving energy; it is also about creating buildings and environments that are future-proof and contribute to a healthy society. We take responsibility for future generations.

Communication is essential

SVP is characterised by an open-minded approach in everything that we do. It doesn't matter whether it is a large- or small-scale project, something we have done many times or never before: we combine four decades of experience with newly acquired knowledge and a personal touch. It is a no-brainer that within our organisation there are a lot of cross-overs between urban planning and architecture. Also outside of our organisation, our design processes are characterised by co-creation as we strive for collaboration between many different parties: clients, users and other stakeholders alike. Together we can make our plans better, more complete and more valuable, so that the design are not only functional and aesthetic, but also widely supported

and future-oriented. Working this way also leads to mutual respect, because it is the best way to achieve great results.

Interested in working at SVP?

SVP offers an inspiring working environment where young talent can develop. We are constantly looking for motivated students and young professionals who want to work on impactful projects. With us, you get the chance to use your creativity and knowledge in all phases of a project, from concept development to implementation. We offer room for personal growth and learning from each other in an open and energetic atmosphere. We look forward to meeting you!



Interested in working at SVP? Scan the QR-code to view available vacancies.



Sweco Architects

Branch
Architecture

Classification

- AUDE
- USRE
- BPS
- SED
- CME
- SUMT
- SMDSA
- BT
- CT

HQ Location
Eindhoven

Employees
85

Visiting address
Bogert 18-20
5612 LZ
Eindhoven

Contact person
Anja Borsboom

☎ 088 811 6100

✉ info-architects@sweco.nl

🌐 sweco.nl/diensten/architectuur

🌐 [linkedin.com/company/sweco](https://www.linkedin.com/company/sweco)



Sweco Architects

Who we are

Our architects and engineers design realistic solutions for complex assignments. Based on a multidisciplinary design attitude and a wealth of experience, we respond to the changes and challenges that await us in the future. We do this with passion and commitment. We use our creativity and craftsmanship to realize pleasant and sustainable living, working and living environments. For current and future generations.

What we do

Our architects and engineers consciously opt for diversity. Diversity in projects, clients, scale and function. With this broad expertise, we shape an inclusive and sustainable society. We stand for realistic and functional designs and measurable sustainability. This way, we lay a solid foundation for projects to flourish and to exceed expectations. Suitable for the user and in the environment, responsible towards the future.

How we do it

We work together intensively. To make a real difference, we need each other. That is why we work together as a collective under the Sweco Architects label. To ensure quality, we collaborate



closely and stay informed about each other's work. In an effective and creative working environment, where everyone feels at home and can develop to their full potential.

Interested in working at Sweco Architects? Scan the QR-code to view available vacancies.



Sweco Nederland B.V.

Branch
Engineering Consultancy

Classification

- AUDE
- USRE
- BPS
- SED
- CME
- SUMT
- SMDSA
- BT
- CT

HQ Location

De Bilt

Employees

2200 (22000 in Europe)

Visiting address

De Holle Bilt 22
3732 HM
De Bilt

Contact person

Lindsay van Heugten

+31 6 23915317

lindsay.vanheugten@sweco.nl

sweco.nl

[linkedin.com/company/sweco](https://www.linkedin.com/company/sweco)



Do you want to make a difference? Then you have come to the right place at Sweco. Together with our customers, we design the communities and cities of the future. We give you the opportunity to work on the most challenging projects. Enabling you to develop professionally and work closely with our customers is key to Sweco's continued success.

We are guided by the differences in our organization. As a person, as an expert. We do this with and for each other. We stand for progress and are always on the move. Sweco is a sum of creative minds, advisors who build bridges between tomorrow and today and daredevils who dare to go further. We challenge the status quo and reward courage and action. At Sweco you work with head, heart and courage



Interested in working at Sweco? Scan the QR-code to view available vacancies.



Tentech B.V.

Branch
Business and Construction

Classification

- AUDE
- USRE
- BPS
- SED
- CME
- SUMT
- SMDSA
- BT
- CT

HQ Location
Utrecht

Employees
13

Visiting address
Rotsoord 9A
3523 CL
Utrecht

Contact person
ir. H.A. Werkman

☎ 030 2521869

✉ hamen@tentech.nl

🌐 www.tentech.nl

🌐 <https://www.linkedin.com/company/tentech-bv/>



Tentech is an innovative design- and engineering consultancy specialized in lightweight structures. Our architects and engineers focus on membrane structures, temporary structures, complex geometries and the use of distinctive materials. In addition to fabric, steel, wood and aluminium, Tentech explores the implementation of cardboard, (3d printable) synthetic material and bamboo. At Tentech, you work, in an international context, on a wide variety of special, challenging and innovative (research) projects.



Interested in working at Tentech? Scan the QR-code to view available vacancies.



Trudo

Branch
Housing Association

Classification

- AUDE
- USRE
- BPS
- SED
- CME
- SUMT
- SMDSA
- BT
- CT

HQ Location
Eindhoven

Employees
70

Visiting address
Torenallee 34
5617 BD
Eindhoven

Contact person
Joep Dirx

☎ 0681939397

✉ jdix@trudo.nl

🌐 trudo.nl

🌐 [linkedin.com/company/trudo-eindhoven/](https://www.linkedin.com/company/trudo-eindhoven/)



TRUDO

supporting
people

Trudo is a social housing association based in Eindhoven.

We play a vital role in providing affordable and sustainable homes across the city. We support people that need us most and work towards an inclusive society. Our mission, Supporting People- Let's Innovate, is integrated in everything we do. With a bold approach, we support individuals striving to move forward in life. This is how we make a difference for our residents and the city of Eindhoven.

Projects

Trudo focuses on more than just building homes. We are one of the driving forces behind the redevelopment of Strijp-S (the former Phillips factory site). In this area, in addition to housing, we also own cultural, creative, and commercial spaces, such as the Klokgebouw and Area51 skate hall.

Other notable projects by Trudo that you may know are Haasje Over, the Trudo Toren, the redevelopment of Woensel-West, and Landgoed Eikenburg. Over the years, we have won several awards for our projects, such as the Gouden Piramide (Haasje Over), the Dirk Roosenburgprijs (oeuvre award), the ARC24 Urban Design Award (Plan Celsius, Woensel-West),



and a nomination for the NRP Gulden Feniks (Veemgebouw).

Circular & biobased

Housing corporations face major challenges such as inequality, climate change and the housing shortage. Guided by our mission Let's Innovate, we actively address these issues in our moonshots for 2035. This results in innovative projects where we prioritize bio-based and circular building. In this way, we aim to reduce the housing shortage whilst minimizing our impact on the planet.

Currently we are building several projects using CLT (Cross-Laminated Timber) and straw, including in the Rustenburgstraat (89 homes), the VB-terrain (200 homes), and Matchbox (36 homes, an office and commercial space).

Network corporation

Trudo is a network corporation that handles some of its operational activities internally whilst delegating certain activities to partners. This approach enables us to realize higher ambitions than what could typically be expected from a medium sized

housing association. A unique product is our Slimmer Kopen-formula. With Slimmer Kopen we make homeownership accessible to a broader audience, by offering the opportunity to buy a house with discount, helping them make steps up the housing ladder.

Working at Trudo

Trudo has a very flat organizational structure. Our five departments (housing, development, finance, strategy & policy and staff) focus their expertise on various core tasks. For example, the development department is responsible for new construction, sustainability and maintenance, whilst the housing department focuses on supporting our residents and improving livability in neighborhoods. Each department operates independently and has its own networks and stakeholders, yet collaborates in multidisciplinary teams on today's complex challenges.

Interested in working at Trudo? Scan the QR-code to view available vacancies.



Turner & Townsend

Branch

Real Estate Construction

Classification

- AUDE
- USRE
- BPS
- SED
- CME
- SUMT
- SMDSA
- BT
- CT

HQ Location

Amsterdam

Employees

130

Visiting address

Rembrandt Tower Amstelplein 1
1096 HA
Amsterdam

Contact person

Meely Muzzamil

+31 6 48 69 96 40

meely.muzzamil@turntown.com

turnerandtowntsend.com

linkedin.com/company/turner-&-towntsend



Making the difference in the Netherlands. From our offices in Amsterdam and Eindhoven, our Netherlands team provides cost and commercial, programme and project management services across the built environment. The key sectors we work in locally include renewable energy projects, real estate, as well as infrastructure.

Our team of over 130 experienced professionals currently advise clients in the Netherlands and leverage their local market expertise to find the best solutions on a project-by-project basis. As an integrated, global organisation, we are able to draw upon expert knowledge and the experience of colleagues worldwide to support global clients, achieve their ambitions.

We are recognised as leaders in safeguarding the commercial objectives of our clients through our cost and commercial management services. Based on our proven project management and programme management approach, combined with our local Dutch market knowledge and incorporation of innovative technology, we actively mitigate risks and transform the performance of projects and programmes.



Fast-track your potential

With the right attitude and drive, we can help you get to where you want to be. The graduates we recruit are strategic, analytical thinkers who see solutions where others see challenges. Realising your true potential with defined learning and development programmes is what we aim for.

What we offer:

- Graduate development programme
- Internships and Working Student jobs

Interested in working at Turner & Townsend? Scan the QR-code to view available vacancies.



Uptime Partners

Branch
Building and Infrastructure

Classification

- AUDE
- USRE
- BPS
- SED
- CME
- SUMT
- SMDSA
- BT
- CT

HQ Location
Utrecht

Employees
8

Visiting address
Atoomweg 63
3542 AA
Utrecht

Contact person
Naomi van der Werff

☎ 0642312069

✉ naomi.vanderwerff@uptimepartners.nl

🌐 uptimepartners.nl

🌐 [linkedin.com/company/uptime-partners](https://www.linkedin.com/company/uptime-partners)



Uptime Partners: Creating full potential
Uptime Partners is a dynamic, hands-on consultancy firm specializing in building environment and infrastructure sectors. We pride ourselves on being creative, energetic, and focused on delivering meaningful impact at key positions within the industry. Through our expertise, optimism, and dedication, we foster improvement, innovation, and connection by empowering a new generation of managers, young professionals, and top talent. Operating at the forefront of the building environment and infrastructure sectors, we bring value to companies, projects, and partnerships. Our mission is to create full potential, always with an eye on the entire lifecycle of assets and projects.

Our Approach

At Uptime Partners, we excel in managing and guiding projects for both public and private clients. Our core focus is to implement successful change and improvement that ensure healthy long-term business operations, clear agreements, and well-structured teams in project- and assetmanagement.

Expertise:

-Project Management: Ensuring the successful planning, execution, and delivery of projects, while maintaining a focus on time, budget, and quality.



-Asset Management: Maximizing the value of assets throughout their lifecycle by implementing sustainable and efficient management strategies.
-Contract Management: Ensuring robust and transparent agreements for successful partnerships.
-Information management: Leveraging data to make informed, strategic decisions.
-Interim Management: Providing experienced leaders to fill critical roles during transitions.
Our consultants are not just advisors. They are essential, hands-on contributors at pivotal moments, bringing the vision, skills, and collaboration needed to drive meaningful change and accelerate progress.
Empowering the Next Generation
We are passionate about developing the leaders of tomorrow. Uptime Partners offers a unique traineeship program designed for young professionals, equipping them with the skills and knowledge to

become full-fledged consultants. This program combines practical experience with tailored guidance, ensuring participants are well-prepared to take on significant roles in the industry.

Why Choose Uptime Partners?

Are you looking for a place where you can make a real impact? At Uptime Partners, we empower young professionals to contribute to innovative projects in the building environment and infrastructure sectors. Whether you're passionate about managing projects, optimizing assets, exploring data management and analytics, or growing your skills in a dynamic team, Uptime Partners offers the opportunity to develop and succeed. Creating full potential!

Interested in working at Uptime Partners? Scan the QR-code to view available vacancies.



Van Wijnen

Branch
Construction

Classification

- AUDE
- USRE
- BPS
- SED
- CME
- SUMT
- SMDSA
- BT
- CT

HQ Location

's-Hertogenbosch

Employees

2400

Visiting address

Utopialaan 54
5232 CE
's-Hertogenbosch

Contact person

Mattias Voshol

📞 0657213640

✉️ m.voshol@vanwijnen.nl

🌐 vanwijnen.nl

🌐 [linkedin.com/company/van-wijnen](https://www.linkedin.com/company/van-wijnen)



Welcome to Van Wijnen! A company with 32 branches throughout the Netherlands, allowing you to experience the benefits of working for a large company while simultaneously enjoying the family feeling at your own branch. We are a property developer, engineering firm, construction company, and property manager. We are primarily active in the Housing domain, but we also operate in the domains of Working, Caring, Learning, and Recreation. Our mission is 'Building space for a better life together.' Together with our clients, partners, and of course all Van Wijnen colleagues, we build in the Netherlands for both current and future generations. We innovate with circularity and raw materials and make tangible impact with our sustainable vision on neighborhoods. We focus on affordable housing for everyone, and to achieve this, we invest in digitization and technological innovation. Van Wijnen is active throughout the entire lifecycle of real estate: developing, building, renovating & transforming, and property management. This is our 'more than building circle.' It offers professionals like you diverse opportunities.



Interested in working at Van Wijnen? Scan the QR-code to view available vacancies.



VeriCon

Branch
Construction

Classification

- AUDE
- USRE
- BPS
- SED
- CME
- SUMT
- SMDSA
- BT
- CT

HQ Location
Veldhoven

Employees
85

Visiting address
De Plank 110
5504ED
Veldhoven

Contact person
Ilse van Delst

☎ 085-0866800

✉ hr@vericon.nl

🌐 vericon.nl

🌐 [linkedin.com/company/
vericoningenieurs](https://www.linkedin.com/company/vericoningenieurs)

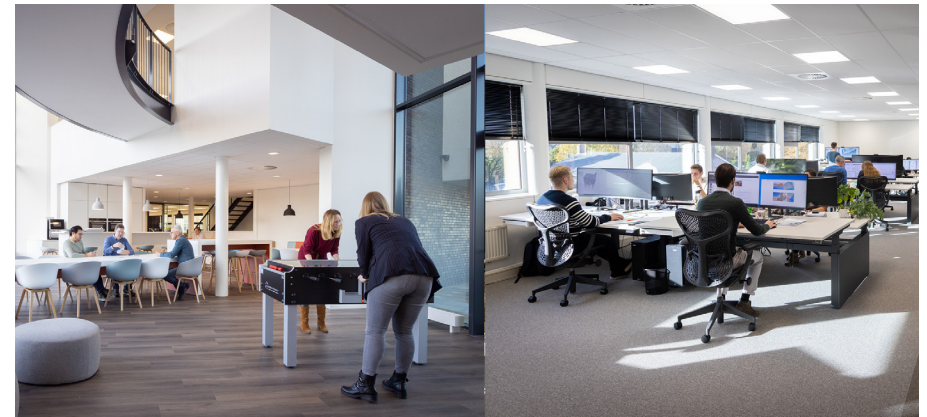


VeriCon

At VeriCon, we firmly believe that the world of construction can be improved, and we are committed to making a substantial contribution to that transformation. Construction needs to evolve from a craft to a technological development. We achieve this by prioritizing innovation and fostering collaboration. Through our innovative solutions, we can accelerate processes, enhance quality, and prevent significant costs resulting from failures. By always considering sustainability, we strive for a better world—and it's working. VeriCon has rapidly grown to become one of the largest companies for structural engineering in the Netherlands.

In the current complex construction industry, where a diverse range of specialists collaborate on the same project, VeriCon provides the solution. With a focus on both architectural considerations and end-user needs, we passionately offer advice, design, model, and calculate economically efficient and environmentally friendly structural designs. Of course we use the latest and most advanced software in the process. And if it doesn't exist, we develop it ourselves.

More and more stakeholders recognize the effectiveness of our approach, yet we haven't reached our



ultimate goal. Within a few years, we aim to demonstrate that our words are not just empty promises, but tangible improvements. Every day, we work diligently and passionately toward this objective. We currently have nearly a hundred structural engineers and 3D engineers.

Variety is at the heart of what we do. Whether it's concrete, steel, or wood, and regardless of the project type, be it residences, high-rise buildings, or unique structures, we embrace challenges and thrive on variety. Collaboration is essential, not only with all parties involved in the construction process but also with you—the engineer of tomorrow.

Would you like to be part of our team and embark on challenging projects? At VeriCon, you will gain practical experience and receive guidance from the best professionals in your field. You are always welcome in our offices in Veldhoven and Druten. We are eager to speak with you and discuss the possibilities. We look forward to meeting you at the Bouwkunde BedrijvenDagen!

Interested in working at VeriCon? Scan the QR-code to view available vacancies.



Witteveen+Bos

Branch

Consultancy and Engineering

Classification

- AUDE
- USRE
- BPS
- SED
- CME
- SUMT
- SMDSA
- BT
- CT

HQ Location

Deventer

Employees

1550

Visiting address

Leeuwenbrug 8
7411 TJ
Deventer

Contact person

Julian Albers

+31 (0)570 69 79 11

info@witteveenbos.com

witteveenbos.com/nl

linkedin.com/company/witteveen-bos/



Talented engineers and consultants with ambition

Witteveen+Bos offers its clients value-added consultancy and top-quality designs for water, infrastructure, environment and construction projects. With a staff of more than 1.550 employees, we are part of the top ten Dutch engineering and consultancy firms. We use our high-end expertise to resolve complex issues and are a committed partner for our clients. Our vision is to offer the very highest level of quality. This means: aiming to be very good at what we do, collaborating with other top experts, and maintaining a culture of entrepreneurship and trust.

Multidisciplinary and fascinating projects

Our multidisciplinary approach to projects is the distinctive feature of the way we work. We serve our clients from seven offices in the Netherlands and thirteen international offices. Our consultancy work includes the entire process from planning, design, engineering, preparation to supervision and project management. Projects we have been working on are for instance: Oosterweel connection in Antwerpen, Spoorzone Delft and Room for the River projects.



Examples of international projects are the Masterplan in Jakarta and drinking water facilities in Africa.

Open for talent and ambition

We attach great importance to our independence and to our corporate culture, which allows all of our employees to excel, utilise their talents to the full and maximise value for clients. Engineers and consultants working at Witteveen+Bos are continuously searching for new challenges. Together with young and enthusiastic colleagues you work in project teams. Working in project teams of varying composition increases the efficient transfer of know-how and promotes the building of good expertise and contact networks. There is plenty of room for staff initiatives by providing employees

with much independence and personal responsibility in projects. Professional development opportunities are offered through in-house training and external courses and seminars.

Are you interested in working at Witteveen+Bos?

Visit our website www.witteveenbos.com where you can find information about our vacancies, internships and thesis possibilities. We also organize several (online) business courses every year.

Interested in working at Witteveen+Bos? Scan the QR-code to view available vacancies.



WSP Nederland

Branch
Engineering and
Professional Services

Classification

- AUDE
- USRE
- BPS
- SED
- CME
- SUMT
- SMDSA
- BT
- CT

HQ Location
Breda

Employees
500

Visiting address
Tram singel 2
4814 AB
Breda

Contact person
Bjarne Telekamp

☎ 088 910 2000

✉ nl.campus@wsp.com

🌐 wsp.com

🌐 [linkedin.com/company/wspnederland](https://www.linkedin.com/company/wspnederland)



Discover WSP

We are one of the world's leading engineering and professional services firms and exist to future-proof our cities and our environment. We provide strategic advisory, engineering, and design services to clients seeking sustainable solutions in the transportation, infrastructure, environment, building, energy, water, and mining sectors.

Our 73,900 passionate people are united by the common purpose of creating positive, long-lasting impacts on the communities we serve through a culture of innovation, integrity, and inclusion. In the Netherlands, 550 colleagues work at 10 different locations spread across the country.

Property & Buildings

Faced with the challenges of climate change and society's evolving needs, we need to rethink our buildings and cities. They must deliver environmental, economic and social benefits: enhancing health and wellbeing, supporting sustainable development, protecting our environments, and adapting to whatever the future brings.

As a worldwide community of built environment experts, we are driven by a passion to change the world for the better.



Through powerful partnerships and multidisciplinary collaboration, we design and engineer buildings and places, and also advice on the development and redevelopment of areas and space to deliver social, environmental and financial value for clients around our changing world.

Interested in working at WSP? Scan the QR-code to view available vacancies.



ZRi

Branch

Building, Consultancy and Management

Classification

- AUDE
- USRE
- BPS
- SED
- CME
- SUMT
- SMDSA
- BT
- CT

HQ Location

Den Haag

Employees

26

Visiting address

Benoordenhoutseweg 46
2596 BC
Den Haag

Contact person

Marjolein Henneman

☎ 0703615559

✉ henneman@zri.nl

🌐 zri.nl

🌐 [linkedin.com/company/ZRi/](https://www.linkedin.com/company/ZRi/)



ZRi is a building consultancy agency with multiple disciplines: Tendering & Contracting, Building Physics & Construction Technology and Building Management. Our team of approximately 26 consultants works on innovative and challenging projects from a characteristic monumental building in The Hague. The projects include new construction as well as renovation and redevelopment of existing buildings. In our work, we pay extra attention to future-proofing, energy efficiency and circularity.



Interested in working at ZRi? Scan the QR-code to view available vacancies.



ZZDP Architecten

Branch
Architecture

Classification

- AUDE
- USRE
- BPS
- SED
- CME
- SUMT
- SMDSA
- BT
- CT

HQ Location
Amsterdam

Employees
20

Visiting address
Valschermkade 37
1059 CD
Amsterdam

Contact person
Julia Beekmans

0206471881

zzdp@zzdp.nl

<http://www.zzdp.nl>

[linkedin.com/company/zzdp-architecten/](https://www.linkedin.com/company/zzdp-architecten/)



ZZDP ARCHITECTEN

Architects Entrepreneurs – This is ZZDP Architecten

At ZZDP Architecten, we blend decades of experience with an innovative vision for the future. Since Piet Zanstra founded our company in 1954, we have grown into a leading architectural firm renowned for our corporate yet striking designs. We aim to create buildings that elevate the image of their users while enhancing the quality of their environment.

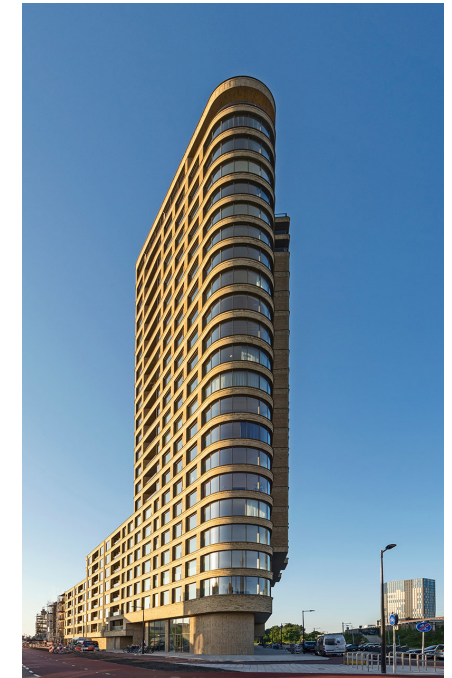
Our strength lies in designing for the private sector, where professionalism and a deep understanding of the free market are paramount. We immerse ourselves in the world of developers, private institutions, and visionaries. At ZZDP, we play an active and guiding role throughout the development process, shaping iconic designs from the earliest stages. This early involvement allows us to fully contribute to architectural appearance, commercial success, and user satisfaction.

Our ambition is to create buildings with character. We believe that a well-designed building should be architecturally compelling so it will be meaningful to its environment. Buildings should connect people to a place, evoking a sense of identity and belonging.



This approach ensures that buildings generate a return on investment, crucial for the private sector, while ultimately contributing to the shared value of our built environment.

Our own office in Amsterdam, developed in 2019, exemplifies this philosophy. This spacious, high-end building features a sleek and distinctive design, serving as our workspace and calling card. Here, we welcome clients and inspire them with our signature corporate style.



We believe that well-designed buildings stand the test of time by becoming part of their environment. Buildings that add a unique value to their surroundings establish an intrinsic connection to their place, making them enduring and relevant.

ZZDP Architecten stands for architecture with lasting meaning.

Interested in working at ZZDP Architecten? Scan the QR-code to view available vacancies.



Expressions of Gratitude

Board 2024-2025

We would like to take this opportunity to thank all participants who made this 24th edition of the Bouwkunde Bedrijvendagen possible. As a board, we put our best effort into improving the Bouwkunde Bedrijvendagen and organizing events which contribute to the networking skills and professional network of both students and companies. We hope everyone had educative, insightful and memorable weeks to elevate your future. As of the 26th of March 2025, this edition of the Bouwkunde Bedrijvendagen will come to an end.

As of June 2024, we, as the 23rd board, have been able to continue the organisation with a strong base laid by our previous boards. We want to thank them all for their previous contributions and a special thanks goes out to the 22nd board, who guided us as our advisory board. Furthermore, all three committees within the board showed dedication, enthusiasm and willingness to learn and improve. The Business Contact Committee managed to create and maintain an extensive network of participating companies. The Organisation Committee created the fundamentals for all the events. The Promotion Committee managed to reach students from all over via multiple channels of promotion. Additionally, we would like to thank our main sponsor Vericon for their confidence, help and contributions.

In organising and promoting our events, the study associations played a meaningful role. We want to thank them for their cooperation and contributions to this year's events.

To all the participating students, companies, sponsors, volunteers, the Committee of Recommendation and the 22nd board of the Bouwkunde Bedrijvendagen, thank you for your interest, dedication and hard work for this year! We hope to see you all during the next edition!

The 23rd board of the Bouwkunde Bedrijvendagen



**Thank you all for your valuable participation.
We look forward to seeing you at the next edition!**



MyFuture.tue.nl

**TIME TO BUILD
YOUR FUTURE**



*Find & develop
your skills!*

CREATING A MIND OF YOUR OWN

Studying at TU/e means that you'll become the academic professional of the future. Studium Generale (SG) guides you along this journey and helps you to expand your horizon on a scientific, cultural, societal, and personal level. Together with students, Studium Generale organizes lectures, debates, movies, documentaries, theatre performances, concerts, exhibitions, workshops, and excursions. You'll learn to look at the world with a curious, involved, and critical eye. And besides that, it's also great fun to visit the programs.

Free and nearby

SG programs mostly take place on TU/e campus, like in De Blauwe Zaal Auditorium, Corona hall in Luna and in Filmhuis De Zwarte Doos. The majority of those are free to visit for both students and all those interested. So come and explore the activities and subjects that aren't mentioned in your study books!

Check out what's coming up on www.tue.nl/sg.

Follow us on social media @studiumgeneraletue to keep yourself updated on all the activities.



VeriCon

It can be better

At VeriCon, we firmly believe that the construction industry can be improved for the better, and we're committed to playing our part in achieving that goal. By prioritizing innovation and collaboration, we can transform construction from a craft to a technology-driven field. By leveraging cutting-edge solutions, we can accelerate processes, boost quality, and reduce costs associated with errors. We remain focused on sustainable practices, working towards a brighter future for all.

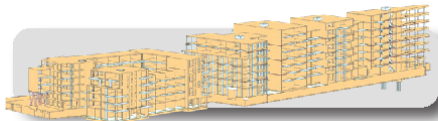
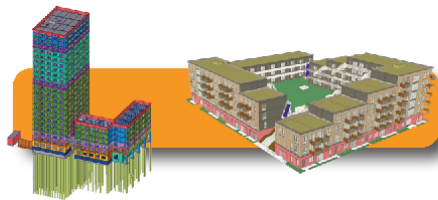
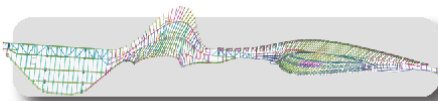
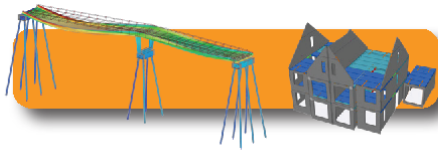
Our approach has earned us a strong reputation in the Netherlands, where we've quickly become a leading consultancy firm in the construction and real estate development industries. Our clients appreciate our results-driven methodology, and we're eager to continue raising the bar. We're not content with just talking about improvement; we're committed to demonstrating real progress.

With nearly 100 structural and 3D engineers on our team, we're constantly pushing ourselves to achieve more.

Concrete, steel or wood; ground-level residential construction, apartment or residential towers, industrial, commercial real estate, healthcare, education or civil projects, VeriCon doesn't shy away from any challenge.

We provide advice, designs, models and calculations for sustainable and economically efficient constructions.

Curious to see the results? Take a look at some of our work down below.



Our DNA



Collaboration

"We combine individual strengths to achieve goals efficiently."

Ambitious

"We are driven to offer more than expected and be successful in doing so."



Innovative

"We have the creativity, ability and will to constantly innovate."

Responsible

"We consider the effects of our choices on people and the environment."



Do these characteristics fit you as well? Do you want to join a team of driven professionals in your field? Are you ready to take on a challenging project? You don't have to wait until you graduate! VeriCon offers internships, graduate positions, work-study programs, and dual programs. We would be delighted to meet you and discuss the possibilities!

More info? Please contact Ilse van Delst: 085 086 68 08 or i.vandelst@vericon.nl or visit our website: vericon.nl

What do employees say about VeriCon?

All fun and games, but what is it really like to work at VeriCon?

We have a flat organizational structure and pride ourselves on our free and independent way of working where personal growth is highly valued. In addition, we like to make room to help you continue to challenge and develop yourself. All this to ensure that you really feel at home with us.

Read below how Wietse and Joost experience working at VeriCon!

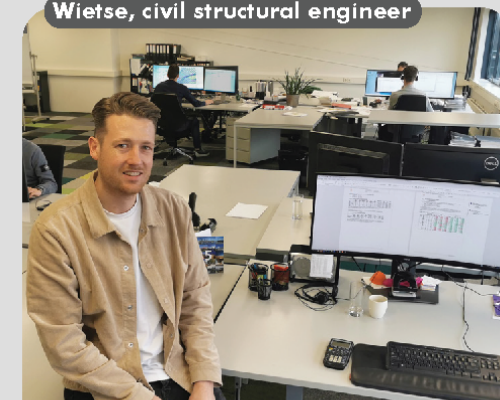
During my graduate internship, I already had good experiences at VeriCon. For this reason, I ended up coming back after a few years, and I'm still happy about that.

I have always been ambitious. I started working at VeriCon, but also wanted to continue my education. VeriCon supported me in that. Not only by paying but also by giving me time to study. This allowed me to complete this study in one go.

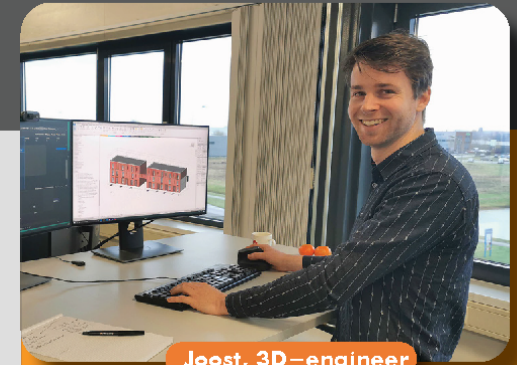
The great thing about working at VeriCon is the freedom I get. I am responsible for the structural calculations of civil projects, but I also have a lot of contact with the client to coordinate matters myself.

We work in a close knit-team. Colleagues are willing to brainstorm when necessary and there is always room for a chat.

Wietse, civil structural engineer



More info? Please contact Ilse van Delst: 085 086 68 08 or i.vandelst@vericon.nl or visit our website: vericon.nl



Joost, 3D-engineer

I did an internship at VeriCon because I had heard that VeriCon designs everything in 3D and strives for high-quality BIM models. In practice it turned out to go much further, the whole process is set up according to BIM. This makes it much easier to collaborate with different teams.

After graduating, I was therefore eager to return to VeriCon. Besides BIM and the challenging work, the freedom you get to develop yourself appeals to me. I learn a lot and there are many opportunities for further growth. There is real collaboration here, everyone uses each other's knowledge.

My goal is to first model my own projects as lead modeler and eventually become a project leader.

Does this sound good to you?

To fulfill our ambitions, we want to expand our team even further.

So don't hesitate to contact us!

