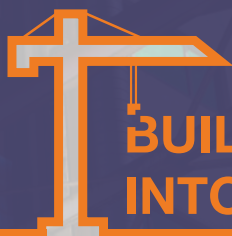




BOUWKUNDE BEDRIJVEN DAGEN

Company Guide 23rd Edition



BUILDING DREAMS
INTO REALITY

Colophon

This Company Guide is a publication of Stichting Bouwkunde Bedrijvendagen on occasion of the 23rd edition of Bouwkunde Bedrijvendagen in 2023.

Contact Address

Stichting Bouwkunde Bedrijvendagen
Eindhoven University of Technology

Postbus 513
5600 MB Eindhoven

✉ info@bouwkundebedrijvendagen.nl
🌐 www.bouwkundebedrijvendagen.nl

Editorial Office

Bouwkunde Bedrijvendagen,
Promotion Committee 2023-2024

Table of Contents

Preface <i>Royal BAM Group</i>	4
Committee of Recommendation	6
Preface <i>22nd Board</i>	8
22nd Board	9
Activities and Program	10
Kick-Off & Lecture by MVRDV	12
1-on-1 Interviews	13
Career Market	14
Lecture by Amvest	15
Discussion: Reconstruction of Post-War Cities	16
Masterclasses	17
Company Dinner	18
Study and Sub-Associations	20
Company Classification	22
Companies	26
Expression of Gratitude	128

Preface

Royal BAM Group

Dear students,

The Bouwkunde Bedrijvendagen 2023 are happening again and we hope that you are as excited as we are! This year we have the honor to be the main sponsor of this great event. This year's programme is again filled with interesting activities that bring students and companies together and we are thrilled that we can contribute to that.

Many of us will agree that our society currently faces many great challenges, including global warming and the recent energy crisis. Rather than seeing such developments as threats to life as we know it, we consider them as challenges that give an impulse to the need to innovate. As one of the biggest construction firms in the Netherlands, we want to be on the forefront of making the transition to a more sustainable society.

Our current strategy at BAM is titled 'Building a sustainable tomorrow', as it reflects our intent to operate more sustainably. We invest a lot in developing solutions that contribute to a more sustainable society for us and the generations that come next. One example is the Flow housing concept, developed by BAM Wonen. By using wood as main material and digitalizing the construction process, Flow allows us to build qualitative houses faster and in a more sustainable way. Another great step towards sustainability is that we increasingly use zero emission electrical equipment. Last but not least, we are on our way towards a fully electrical car fleet.

In order to continue building the sustainable tomorrow we dream of, it is essential we keep attracting young talent. For recent graduates who are eager to explore the possibilities we have, we offer a two-year traineeship in which you get to experience four different roles within the company. Which roles that will be, is completely up to you. You can explore what it is like to work on different specialisms, including civil engineering, non-residential construction and area and property development.

When you want to experience BAM while you are still studying, you can do your internship with us. What that will look like, is determined by you - in collaboration with our internship coordinators. We do not work with job descriptions that are set in stone, which gives you more freedom in creating your ideal internship. Visit our career website (bamcareers.com) for more information on all possibilities or to get in touch with us.

We are very much looking forward to meeting you all at the Bouwkunde Bedrijvendagen and hope for inspiring and informative days!

Kind regards,
Royal BAM Group



Committee of Recommendation

2023-2024

The initiative of the Bouwkunde Bedrijvendagen is supported by the following people:



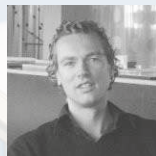
Drs.
Robert-Jan Smits
President
TU Eindhoven



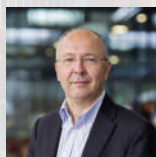
Prof.
Silvia Lenaerts
Rector Magnificus
TU Eindhoven



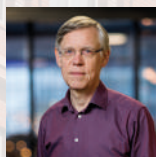
Prof. Dr. Ir.
Theo Salet
Dean Faculty of the
Built Environment
TU Eindhoven



Ir.
Jan van der Meulen
Director of Education
Faculty of the Built
Environment
TU Eindhoven



Prof. Dr. Ir.
Jos Brouwers
Professor BPS
TU Eindhoven



Prof. Dr. Ir.
Bauke de Vries
Professor USRE
TU Eindhoven



Prof. Ir.
Juliette Bekkering
Professor AUDE
TU Eindhoven



Prof. Ir.
Bert Snijder
Professor SD
TU Eindhoven



Drs. Ing.
Miguel Delcour
Director
KIVI



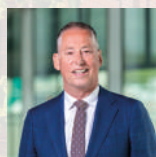
Drs.
Arno Visser
Chairman
Bouwend Nederland



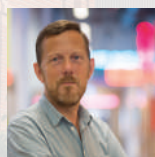
Karin Oomen
Advisor Education &
Job Market
Bouwend Nederland



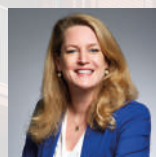
Prof. Dr.
Tom Veldkamp
Rector Magnificus
University of Twente



Prof.
Tim van der Hagen
Rector Magnificus
TU Delft



Prof. Ir.
Dick van Gameren
Dean Faculty of the
Built Environment
TU Delft



Carla Heemskerk
Director Bouwen op
Maat
Koninklijke BAM
groep nv



Preface

Board 2023-2024

Dear participant of the Bouwkunde Bedrijvendagen,

Welcome to this year's edition of the Bouwkunde Bedrijvendagen! With over two decades of interesting, informative and fun events, the Bouwkunde Bedrijvendagen have taken their place in the Built Environment faculty by helping students prepare for their future. For this reason, it is an incredible honour to organise these events this year as the 22nd board! The aim of this already 23rd edition is to bring Built Environment students, from first years to graduates in contact with companies, to improve their professional network, to get an insight into the working field and to help them orientate for all possibilities after their studies.

With the Built Environment being divided into a range of different disciplines, students get to know the basics of everything the built environment has to offer. This basis in turn allows students to pursue the discipline that interests them most and that they see themselves working in within their dreams. With this choice possibly influencing the future of these students, it is of utmost importance that every aspect of each discipline is known to the student. For this reason, we as the Bouwkunde Bedrijvendagen, together with our main sponsor Koninklijke BAM Groep and all of the other participating companies, try to give insights into the available disciplines and their application in the working field. Our slogan, 'Building dreams into reality', represents this pursuit of following your dreams and making the right decision for your future that follows your interests. All of the events allow the student to get to know the possibilities, explore them further, boost their skills and identify their ambitions. This way, students can already start building their dreams into reality!

This year's edition will take place from Tuesday the 3rd of October until Wednesday the 11th of October and will start with a Kick-Off Lecture on the first day. This Kick-Off day is followed by the highlight of the events, the Career Market: the perfect place to stroll around, get in contact with any of the 51 present companies and gather information and insights on the different working fields. The Career Market takes place in the afternoon and is preceded by the 1-on-1 Interviews, in which you can get into contact with the participating companies in a more formal and individual way. The second week of the events starts on Tuesday the 10th of October with a Lunch Lecture. This same day at night, a Discussion is held about a current topic: the reconstruction of post-war cities. The final day of this year's edition starts with a number of different Masterclasses and is followed by the Company Dinner in the evening, which also serves as the closure of the events, where you can get in touch with a range of companies in a more informal way.

We hope to see you at our events so you can start building your dreams into reality!

The 22nd board of the Bouwkunde Bedrijvendagen

Board 2023-2024



Lotte van Dam
Chairwoman
Member of Business Contact



Brian Rakké
Secretary
Member of Promotion



Thomas van Kooten
Treasurer
Member of Organization Day



Gisela Meça
Head of Business Contact



Emma Hengst
Head of Promotion



Matuš Kianička
Head of Organization Day



Vigo de Groot
Member of Business Contact



Marc Palmer
Member of Promotion



Nicole Bergendal
Member of Organization Day

Activities



Masterclasses



Lectures



Discussion: The reconstruction of post-war cities



1-on-1 Interviews



Career Market



Company Dinner

Program

03
OCTOBER

12:40 - 13:30

Kick-Off

Lecture by MVRDV

04
OCTOBER

8:45 - 12:30

1-on-1 Interviews

12:30 - 16.00

Career Market

10
OCTOBER

12:40 - 13:30

Lecture by

Amvest

10
OCTOBER

19:30 - 21:00

Discussion:

**The reconstruction
of post-war cities**

11
OCTOBER

8:45 - 12:30

Masterclasses

11
OCTOBER

18:00 - 22:00

Company Dinner



Kick-Off Lecture by MVRDV

The Kick-Off event of this year's Bouwkunde Bedrijvendagen will take place on the **3rd of October**.

This event will start with a brief opening followed by a lecture by Inger Kammeraat – former TU/e-student and currently Partner & Managing Director at MVRDV.

Ms. Kammeraat will focus on her personal career path – from studying architecture at TU/e, to international project management experiences, and her current position at MVRDV.

She will say some words about the wide variety of multidisciplinary work and projects she has been involved in over the years.



1-on-1 Interviews

The 1-on-1 interviews will take place on the **4th of October**. This is your moment to get a more formal, private talk with the representatives of a company of your interest. Every interview will last 15 minutes in which you can present yourself and ask all the questions you want to ask the companies. It could possibly be your first contact moment with your future employer!

The following companies will be present at the 1-on-1 interviews:

- Arcadis
- Atriensis projecten
- Breed Integrated Design B.V.
- Ector Hoogstad Architecten
- Heijmans
- ICSadviseurs
- INBO Architects
- Koninklijke BAM Groep nv
- OPPS B.V.
- Powerhouse Company International B.V.
- Remmers Bouwgroep B.V.
- RoosRos Architecten
- Royal Haskoning DHV Nederland
- RYSE
- Stevens van Dijck Groep
- SVP Architectuur en Stedenbouw
- Sweco Nederland B.V.
- Van Aken – part of Sweco
- VeriCon
- Volantis B.V.

Your CV is required as companies select students based on CV uploads. **The subscription for this closes on the 27th of September. You can subscribe via bouwkundebedrijvendagen.nl.**



Career Market

The most renowned event of the Bouwkunde Bedrijvendagen, the Career Market, will take place at the **4th of October**.

During this market, a diverse selection of companies that give representation of the possibilities in the Built Environment sector will be present at Plaza, in Vertigo.

After the market has been opened, you can walk around and talk to all different types of interesting companies. Not only companies will be present, but also all the study associations will be there to inform you about the companies that fit their discipline.

If you are not sure where to start, you can also join a tour by one of the study associations. After the market closes at 16:00, everybody is more than welcome to join the companies for some drinks at Plaza, powered by the SkyBar!Underground.

At the Career Market, getting in contact with your future employer has never been so easy!



Lecture by Amvest

The second lecture of the Bouwkunde Bedrijvendagen will take place on the **10th of October** and will be given by Amvest.

Giving people a good home: that is Amvest's mission. As an investment manager and a developer of homes and residential areas in the Netherlands, Amvest aims to contribute to well-functioning neighbourhoods in which people are happy to live for a long time. How do they do that? By understanding that development and investment go hand in hand. By investing in diverse neighbourhoods. And by choosing for the future, and prioritising quality.

Amvest Investment Management operates around 20,000 rental homes in both the free rental market and social rental sector. They fall under three portfolios: the Amvest Residential Core Fund, the Amvest Living & Care Fund and the separate accounts. In the coming years, Amvest Development will create around 10,000 new homes. These are primarily rentals, but they also develop homes to buy, care homes and facilities. Amvest was founded in 1997 as a joint venture between Aegon and Pensioenfonds Zorg en Welzijn (PfZW).



Discussion: The reconstruction of post-war cities

The war in Ukraine continues to affect people living in the country's cities. But amid the destruction and ongoing conflict, the country is determined to rebuild its cities and restore its cultural heritage.

Throughout history and around the world, there are numerous examples of cities that have been rebuilt after war, some almost completely. What happens when a city is rebuilt from the ground up, and what geopolitical and economic realities do its citizens face? Exploring post-war cities that have undergone remarkable transformations after periods of war and destruction, such as Rotterdam in the Netherlands, allows us to delve into the intricacies, strategies, and lessons learned from the rebuilding process.

In collaboration with Studium Generale, this discussion brings three experts together to discuss and share their views and experiences of post-war reconstruction and reform, with a particular focus on the situation in Ukraine.

The discussion about 'the reconstruction of post-war cities' will take place on the **10th of October from 19:30 to 21:00 at 'LAB-1' at the Keizersgracht 19, Eindhoven.**

You will receive a Studium Generale point for this activity. If you want this point, subscribe at studiumgenerale-eindhoven.nl



Masterclasses

The Masterclasses will be given by KOW Architecten and Evoke on the **11th of October.**

The KOW Architecten have prepared for you a masterclass about architectural portfolios.

Have you ever had doubts about how to structure a convincing portfolio for your internship or a job application? This masterclass will enhance your knowledge and skills about how to structure a convincing portfolio, how to go create a good template, or which drawings and features are important to consider.

KOW Architecten as a firm with experience in the field will also provide some tips and tricks, do's and don'ts so your portfolio can bring out your best qualities.

Evoke is providing two masterclasses. One is focused on preparing for the job interview process, with tips and tricks, and information about the current job market within the built environment. The other is oriented towards presenting yourself professionally, including improving your CV and LinkedIn profile.

More detailed information about the contents of the masterclasses can be found on the website!

The subscription for the Masterclasses closes on the 10th of October. You can subscribe via bouwkundebedrijvendagen.nl.



Company Dinner

The Company Dinner will be the closing event of this year's edition and will take place on the **11th of October**.

During this event, students get the chance to talk to companies in an informal atmosphere. The Company Dinner will consist of four rounds. The first three rounds include a course and the last round includes a drink. After each round, the students will switch tables, so you get a chance to talk to different experts of the Built Environment. The company dinner is held at Restaurant BUNKR this year.

The participating companies are:

- Atriensis projecten
- B-Invented B.V.
- Breed Integrated Design B.V.
- Cauberg Huygen
- Koninklijke BAM Groep nv
- MR. STIR architect + planner
- Nebest B.V.
- RYSE
- TwynstraGudde
- VeriCon
- Werken bij de WOCO

The subscription for the Company Dinner closes on the 2nd of October. You can subscribe via bouwkundebedrijvendagen.nl





Study and Sub-Associations



cheops.cc
info@cheops.cc

Built Environment Study Association



anarchi.cc
info@anarchi.cc

AUDE



mollier.nl
info@mollier.nl

BPS



www.koerstue.nl
info@koerstue.nl

SED



service-studievereniging.nl
info@service-studievereniging.nl

USRE



ofcoursecme.nl
ofcourse@bwk.tue.nl

CME

Company Classification

The faculty of the Built Environment at the TU/e offers 2 master programs; ABP, containing 6 master tracks, and CME. Each program or track is tailored towards a certain field within the Built Environment. As a lot of companies in the Built Environment are multifaceted and active in more than one field, it might be hard to distinguish their exact direction. Hence, based on the offered education at the TU/e, a classification is made for all participating companies at the Bouwkunde Bedrijvendagen to make it easier to find your preferred direction and companies during the events.

Architectural & Urban Design Engineering: this ABP track stands at the cradle of inventive design solutions for concrete spatial issues, emphasizing the possibilities of the program, and ensuring a high quality of context. The track offers two specialisations: architecture and urbanism. The architecture specialisation within this track focuses on designing buildings, whereas the urbanism specialisation focusses on the bigger scale of urban planning.

Urban Systems & Real Estate: this ABP track focuses on the functioning and research in the field of real estate management, urban planning, (re)development and management of cities and developing systems to support designers and decision makers.

Building Physics & Services: this ABP track focuses on providing sustainable and comfortable indoor and outdoor environment with attention to physical aspects and processes such as heat and moisture transfer in building constructions, indoor air quality, lighting, acoustics, heating, ventilation, air-conditioning and materials.

Structural Engineering & Design: this ABP track contains innovative constructive design, material research and applied mechanics, with core focus on knowledge and application of different structural materials as well as on several methods to solve mechanical problems.

Construction Management & Engineering: this master program focuses on process and project management, collaborative design and legal structures, with its focus point on information systems in smart cities and smart buildings.

Sustainable Urban Mobility Transitions: this is one of the new ABP master tracks at the edge of the build environment scope, where students implement a holistic approach in facing different issues traditionally faced by architects and urban planners, civil and transport engineers, and political scientists.

Smart Mobility Data Science and Analytics: Nowadays, data is extracted from all aspects of our lives. We leave data trails in every day-to-day activity, including travelling. At SMDSA one learns to manage large mobility data files, critically understand their quality and use them to address our cities' most pressing challenges.

Building Design & Technology (BT)*: emphasizes on the relation between the design of the building and its technical elaboration.
Construction Technology (CT)*: emphasizes on independent designing and developing a production process for the construction of a building by using materials, equipment and labor in the most optimal way.

*These are no longer separate master tracks, but are achievable as certificate programs in addition to any of the master tracks and offer the possibility to broaden your education.

Orientation

On the next pages, a list of companies that are participating in the events of Bouwkunde Bedrijvendagen is provided. All companies are classified based on this colour-coded classification to the master tracks they match the best with. Note that some companies are involved in multiple work fields and therefore have multiple matches.

If you're interested in a company and would like to read more about the work in its active branch, orienting for career options or just want to know in which events they participate, look up the corresponding page number of their dedicated company pages in the list of participating companies and read more about it.

On the bottom right of the company pages, an indication is given using orange activity symbols for every company, stating in which events they participate during the Bouwkunde Bedrijvendagen.

As part of the MyFuture collective, MFA can be earned by participating in the events organised as part of the Bouwkunde Bedrijvendagen.

Companies

	Page Nr.	AUDE	USRE	BPS	SED	CME	SUMT	SMDSA	BT	CT
1. Adviesbureau Tielemans	26	○	○	○	●	○	○	○	○	○
2. Antea Group	28	●	○	○	●	●	○	○	○	●
3. Arcadis	30	●	●	●	●	●	●	○	○	●
4. Atriensis projecten	32	○	●	●	○	●	●	○	○	○
5. bnn adviseurs	34	●	●	○	○	●	○	○	○	○
6. Bilfinger Tebodin	36	●	○	●	●	●	○	○	○	●
7. BIM-Connected	38	○	●	○	○	●	○	○	○	○
8. B-invented B.V.	40	●	○	○	●	●	○	○	○	●
9. Breed Integrated Design B.V.	42	●	○	○	●	○	○	○	○	○
10. Brink Management / Advies	44	●	●	○	○	●	○	○	○	○
11. Cauberg Huygen	46	○	○	●	○	○	●	○	○	○
12. CBRE B.V.	48	●	●	●	●	●	●	○	○	●
13. Continu Professionals	50	●	●	●	●	●	●	○	○	●
14. Croes Bouwtechnisch Ingeneursbureau	52	●	○	○	●	○	○	○	○	○
15. Draaijer & LSa	54	○	●	○	○	●	○	○	○	○
16. Dura Vermeer	56	●	●	○	○	○	○	○	○	○
17. Ector Hoogstad Architecten	58	●	○	●	○	○	○	○	○	○
18. Goudstikker-de Vries	60	○	○	○	●	○	○	○	○	○
19. Heijmans	62	○	●	●	●	●	●	○	○	●
20. ICSadviseurs	64	●	●	●	●	●	○	○	○	●
21. INBO Architects	66	●	○	○	○	○	○	○	○	○
22. KAW Architecten	68	●	○	○	○	○	○	○	○	○
23. Koninklijke BAM Groep nv	70	●	●	●	●	●	●	○	○	●
24. Movares	72	●	●	●	●	●	●	○	○	●
25. MR. STIR architect+planner	74	●	○	○	○	○	○	○	○	○
26. MVRDV	76	●	○	○	○	○	○	○	○	○
27. Nebest B.V.	78	○	○	●	●	○	○	○	○	●

28. Nieman Raadgevende Ingenieurs	80	○	○	●	○	○	○	○	○	○
29. Olco Maatschappelijk Vastgoed	82	○	●	○	○	○	○	○	○	●
30. OPPS B.V.	84	○	●	○	○	○	○	○	○	○
31. Pieters Bouwtechniek B.V.	86	○	○	○	○	○	○	○	○	●
32. Powerhouse Company International B.V.	88	●	○	○	○	○	○	○	○	○
33. Remmers Bouwgroep B.V.	90	●	○	○	○	○	○	○	○	○
34. Republiq	92	●	●	○	○	○	○	○	○	○
35. RoosRos Architecten	94	●	○	○	○	○	○	○	○	○
36. Royal Haskoning DHV Nederland	96	●	●	●	○	○	○	○	○	●
37. RYSE	98	○	●	○	○	○	○	○	○	○
38. SKS Group	100	○	○	○	○	○	○	○	○	○
39. Snijders Ingenieursgroep	102	○	○	○	○	○	○	○	○	●
40. Stevens van Dijck Groep	104	○	○	○	○	○	○	○	○	○
41. SVP Architectuur en Stedebouw	106	●	○	○	○	○	○	○	○	○
42. Sweco Nederland B.V.	108	●	●	●	○	○	○	○	○	●
43. TwynstraGudde	110	●	●	○	○	○	○	○	○	○
44. Van Aken - Part of Sweco	112	●	○	○	○	○	○	○	○	○
45. Van Rossum Raadgevende Ingenieurs	114	○	○	○	○	○	○	○	○	○
46. Van Wijnen	116	●	●	●	○	○	○	○	○	●
47. VeriCon	118	○	○	○	○	○	○	○	○	●
48. Volantis B.V.	120	●	○	○	○	○	○	○	○	○
49. Werken bij de WOCO	122	○	●	○	○	○	○	○	○	●
50. WSP Nederland B.V.	124	●	○	○	○	○	○	○	○	○
51. ZRi	126	○	○	○	○	○	○	○	○	○

Adviesbureau Tielemans

Branch
Consultancy

Classification

- AUDE
- USRE
- BPS
- SED
- CME
- SUMT
- SMDSA
- BT
- CT

HQ Location
Eindhoven

Employees
35

Visiting address
Insulindelaan 113
5642 CV
Eindhoven

Contact person
Marcel Meulendijks

+31 40 2814455

mmeulendijks@tielemans.nl

tielemans.nl

linkedin.com/company/adviesbureau-tielemans-bv



Since its foundation in 1958 Adviesbureau Tielemans has become one of the largest and most leading structural consultants in this region. Based in Eindhoven, our engineers work with reputable national and international architects on innovating and eye-catching projects both in the Netherlands and abroad. Come see us at our stand and learn what our office has to offer you as a talented engineer!

Working at Adviesbureau Tielemans in a design team you aim for the highest achievable combination of shape, structural efficiency and function. This also means following the technological developments in our field so that they can directly contribute to the desired result in practice. Depending on your own skills, you will have the opportunity and support to grow into a project manager function in a short period of time. Within every project we are facing the challenge to elaborate any architectural concept to a suitable structural design.

This resulted in the recently awarded prices:
"Domus Dela" BNA Building of the year public award 2020 and Dirk Roosenburg public award 2021;
Haasje Over won residential building of the year by Architectenweb;
Onyx won Holland Hoogbouw Award 2019.



Adviesbureau Tielemans is situated nearby Eindhoven University of Technology. Hence, knowledge and structural design are close together. This means there is a high probability that, as a student of the University, you have seen projects in Eindhoven of which Adviesbureau Tielemans has designed the main bearing structure. For example, some high-rise on Strijp-S: Blok 59, NEXT, The Lux Tower, Trudotoren (top photo) and Haasje Over, but also de Bakermat, Onyx, and the currently being built Toren Niko, Philips Bedrijfsschool. Some other recent projects around the Netherlands

include Transformation KVL-building (bottom photo), Domus Dela, Van der Valk Lelystad and Venlo, Omnia for the WUR, Pathé Cinema Leeuwarden and PLUS ULTRA Leiden and Groningen

If you are interested, come and meet our engineers at the Adviesbureau Tielemans stand!

Interested in working at Adviesbureau Tielemans? Scan the QR-code to view available vacancies.



Antea Group

Branch
Civil Engineering

Classification

- AUDE
- USRE
- BPS
- SED
- CME
- SUMT
- SMDSA
- BT
- CT

HQ Location
Heerenveen

Employees
1500

Visiting address
Beneluxweg 125
4904 SJ
Oosterhout

Contact person
Lotte Westerhuis

☎ +31 6 10242719

✉ lotte.westerhuis@anteagroup.nl

🌐 anteagroup.nl

🌐 [linkedin.com/company/antea-group-nederland](https://www.linkedin.com/company/antea-group-nederland)



About Antea Group

Antea Group is a consultancy and engineering firm that operates internationally. We have 3.100 staff working all over the world. Antea Group combines strategic thinking, multidisciplinary and technical expertise and pragmatic actions. This enables us to provide effective, sustainable solutions to the challenges our clients are facing. We have offices in Europe, North and South America, Africa and Asia. In partnering with the Inogen alliance of environmental consultancies, Antea Group has an almost worldwide presence.

Antea Group in the Netherlands

Under the name Oranjewoud, we expanded into a multifaceted, independent partner for both companies and government bodies. As Antea Group, we also apply this knowledge at a global level. By combining valuable knowledge with a pragmatic approach, we make solutions attainable and workable. Goal-oriented, with an eye for sustainability. In this way, we anticipate today's questions and tomorrow's answers. Just as we have been doing for over 65 years now. Full of pride and enjoyment.

Ambition

Antea Group wants to be at the forefront of the development and application of sustainable and integral solutions



in our living environment. We play a responsible role by using our expertise to ensure a sustainable future, full of pride and enjoyment.

Sustainability

Sustainability, an essential subject that will ensure Antea Group's continuity in the years ahead. How? By striking a balance between the 'three Ps': Profit, People and Planet.

Business lines

In the Netherlands, Antea Group has six business lines that, either together or alone, can contribute towards finding the best possible solution for the client. Our business lines:

- Contracts & Permits
- City & Climate
- Infrastructure
- Data & Contracting
- Environment, Safety & Health
- Building & Installations

Antea Group on the international stage

Antea Group operates worldwide, so clients from outside the Netherlands can also benefit from our expertise. Wherever you are in the world, from Colombia to France or India to the USA, we provide expertise, products and services that meet the specific requirements of each country or region.

Business Code

Antea Group has adopted the following core values: enterprising, people-focused, evolutionary and characterful. These values determine how our firm and staff behave and interact with the environment and one another.

Antea Group

Understanding Today. Improving Tomorrow.

Interested in working at Antea Group? Scan the QR-code to view available vacancies.



Arcadis

Branch

Design and Consultancy

Classification

- AUDE
- USRE
- BPS
- SED
- CME
- SUMT
- SMDSA
- BT
- CT

HQ Location

Amsterdam

Employees

37000

Visiting address

Piet Mondriaanlaan 26
3812 GV
Amersfoort

Contact person

Simran Kour

+31 6 21231086

simran.kour@arcadis.com

arcadis.com

linkedin.com/company/arcadis



Arcadis is the world's leading company delivering sustainable design, engineering, and consultancy solutions for natural and built assets. We are 33.000 people, in over 70 countries, dedicated to Improving Quality of Life. We offer sustainable solutions to our clients and deliver design-, advice-, engineering, - project- and management services.

Sustainability and a positive impact

With sustainability at the heart of everything we do, our focus is on maximizing our impact aimed at improving quality of life. The solutions we develop address important societal challenges around Resilience, Places, and Mobility. As a business, we want to maximize our impact by harnessing the power of technology and data to develop solutions to today's and tomorrow's global challenges. We are focused on improving the way resources are utilized, protecting our environment, creating transporting solutions, and planning for the places where we can enjoy our work and home lives.

Career opportunities

Every year about 200 interns and 150 starters choose for Arcadis. Do you want to find out more about Arcadis? Check out our website for more information.



Interested in working at Arcadis? Scan the QR-code to view available vacancies.



Atriensis Projecten

Branch
Consultancy

Classification

- AUDE
- USRE
- BPS
- SED
- CME
- SUMT
- SMDSA
- BT
- CT

HQ Location
Eindhoven

Employees
128

Visiting address
Zemikestraat 17B
5612 HZ
Eindhoven

Contact person
Susan van den Boomen

+31 40 7501520

s.v.d.boomen@atriensis.nl

atriensis.nl

linkedin.com/company/atriensis



Atriensis projecten is a young and dynamic company. We support social housing associations with their challenges related to energy and sustainability.

Our advisory services focus on:

- Energy and sustainability policies
- Renovation projects
- Gathering and controlling real estate data
- Programs to stimulate and motivate conscious residents' behavior
- Advice on the implementation of new energy technologies

Atriensis projecten has a flat organizational structure. Due to continued growth, we offer many career possibilities for starters with different disciplines within the built environment. Atriensis projecten is an organization with passion for sustainability and a heart for social housing. Atriensis projecten operates throughout the Netherlands from offices in Eindhoven, Zwolle and Amstelveen. We work together with our sister company Atriensis data. Atriensis data focuses on gathering and controlling real estate data.

Employees of Atriensis projecten share a number of qualities:

- Social responsibility
- Customer orientation
- Integrity
- Reliability
- Fluent in Dutch



Atriensis was founded 16 years ago. On October 1st of 2018 we split Atriensis in two companies: Atriensis projecten and Atriensis data. Atriensis projecten is a young and dynamic company that supports social housing associations with their challenges related to energy and sustainability. We are a fun, informal company with a young and energetic team of colleagues. Atriensis projecten wants to motivate and fascinate their employees, establish a sustainable working relationship with them and ensure a good work-life balance. For example, Atriensis projecten provides a daily lunch, flexible working hours, working from home, a customized internal training program with around 70 – in company – courses and excellent working conditions with many possibilities to develop yourself!



Internship, graduation or your first job at Atriensis projecten? Interested in applying for a position with us? We have many (job) opportunities: internships, graduation projects and vacancies for starters and young professionals. For more information, please visit our website at www.atriensis.nl or sent us an e-mail: werken@atriensis.nl

Interested in working at Atriensis Projecten? Scan the QR-code to view available vacancies.



bbn adviseurs

Branch
Consultancy

Classification

- AUDE
- USRE
- BPS
- SED
- CME
- SUMT
- SMDSA
- BT
- CT

HQ Location
Houten

Employees
120

Visiting address
De Molen 100
3995 AX
Houten

Contact person
Maaïke Stip

☎ +31 88 2267400

✉ info@bbn.nl

🌐 bbn.nl

🌐 [linkedin.com/company/bbn-adviseurs](https://www.linkedin.com/company/bbn-adviseurs)



bbn

een betere wereld
vol mogelijkheden

Achieve your career goals!

bbn adviseurs is an independent consultant company in real estate and land development. We work on many different types of real estate projects. We support our clients with real estate initiatives, urban (re)development, housing issues and construction initiatives. Different types of projects also provide different clients, like public institutions, governments, commercial clients and so on.

Our expertise is widely acknowledged. Among others, we employ project managers, planning economists, construction cost managers, real estate managers, data analysts and sustainability specialists. Combining this expertise in multidisciplinary teams, we take on challenging and exciting assignments with an integral approach. An integral approach entails a combination of the perspectives from all of the different disciplines and an open dialogue to achieve the best and most fitting result for the client.

The strength of bbn is our unique broadness of our services. We have knowledge in every market domain. With all disciplines "in house" we bring added value to our clients in every building lifecycle.



Sustainability is essential in our company, in which renewable energy, circularity and livability are our three primary objectives. "At bbn we want to make the world a bit cleaner" and together with our clients we contribute to the Sustainable Development Goals (SDGs) of the United Nation.

We frequently organize project visits, masterclasses and social events with young bbn. We are always open for talent to strengthen our teams. With our different offices at Houten, Amsterdam and Rotterdam there is always a place that would suit you. bbn will give you all the freedom you require to fully develop your potential and fulfill your ambitions. We offer the opportunity to explore your passion, to specialize and grow on a personal and professional level.

Why choose bbn?

- **Collaboration**
You work in an open atmosphere with short lines of communication
- **Enthusiasm**
Your active attitude and curiosity is valued and appreciated
- **Ambition**
You decide for yourself in which direction and at what pace you want to grow
- **Learning curve**
You will receive an internal training program and coaching
- **Outstanding projects**
You work on the most innovative and sustainable projects in the Netherlands

Interested in working at bbn adviseurs? Scan the QR-code to view available vacancies.



Bilfinger Tebodin

Branch

Consultancy and Engineering

Classification

- AUDE
- USRE
- BPS
- SED
- CME
- SUMT
- SMDSA
- BT
- CT

HQ Location

Den Haag

Employees

900



Visiting address

Laan van Nieuw Oost-Indië 25
2593 BJ
Den Haag

Contact person

Erwin van Butselaar

+31 6 43166804

erwin.van.butselaar@bilfinger.com

tebodin.bilfinger.com

linkedin.com/company/bilfinger-tebodin/mycompany



BILFINGER

We work on socially relevant (consultancy & engineering) projects that concern everyone. For example, we work for leading customers in a wide variety of industries. Think of chemicals, pharmaceutical, food & beverage and oil & gas. We also make an active contribution to the energy transition that is underway in order to achieve the climate objectives. So plenty of variety!

Our engineers are deployed for consultancy, engineering, project management, procurement and construction management services, in projects from our own offices or at our customers' location. In short: everything needed to make an engineering project a success. We are Bilfinger!

We have offices across The Netherlands. In south east we are located in Eindhoven (High Tech Campus) and Elsloo.



Interested in working at Bilfinger Tebodin? Scan the QR-code to view available vacancies.



BIM-Connected

Branch

Construction, Infrastructure, Energy
and Real Estate

Classification

- AUDE
- USRE
- BPS
- SED
- CME
- SUMT
- SMDSA
- BT
- CT

HQ Location

Eindhoven

Employees

25

Visiting address

Torenallee 62-22
5617 BD
Eindhoven

Contact person

Bob van Thiel

+31 40 2201943

info@bim-connected.com

bim-connected.com

linkedin.com/company/bim-
connected



We are happy to say that BIM-Connected just celebrates his 5th anniversary. Grown to a fun and progressive organisation with over 20 colleagues with a data-driven mindset. We have a clear vision and mission how we support clients in the construction, infrastructure, energy and real estate industry with BIM and IT. We translate their requirements and goals into practical solutions. Our consultants and software products Wistor and BIM-Bridge are able to help you to work more efficient, faster and especially to reach a higher level data quality. Data which is captured in 3D, GIS or other information resources. We'll give clients better insights. We make data valuable!

Society has unprecedented technical possibilities. It's in the interest of all of us that the realisation and maintenance of the largest systems for transport, energy and construction works remain affordable and of high quality. Given the importance of the right information at the right place, the software parties should work together to facilitate business in practice. This happens, thankfully, and the infamous vendor lock-in will lose to collective partnership. However, the battle isn't over yet, a continuous collaboration between the users and the software independent IT workers is required. After all, the technology alone is not enough. There is a bridging function to be fulfilled



between the multidisciplinary work processes, determining and obtaining the management information and the use of IT technology. We facilitate this bridging function with the specialisation in information technology and with domain knowledge of our industries.

The rewards of digitalisation and automation can be reaped by those who master the technology. We have this expertise and can act as an extension of any organisation. We support clients and contractors in our industries to collectively achieve a higher level of capturing and exchange of information. We are fans of transcending (inter) national and organisational standards. With a good dose of humour, fighting spirit and substantive knowledge,

we take our clients on a journey! And yes, a lot of stories can be told of our travels in tackling the legacy and implementing new ways of working. With perseverance, substantive discussion, sometimes a bit of politics and openness to new insights. We are happy to contribute with our (digital) work to really solving asset management issues in the construction industry and think it is great to witness the developments in our markets!

Interested in working at BIM-Connected? Scan the QR-code to view available vacancies.



B-invented B.V.

Branch

Engineering and other technical design
and consultancy/architecture

Classification

- | | |
|--------|---------|
| ● AUDE | ○ SUMT |
| ● USRE | ○ SMDSA |
| ● BPS | ● BT |
| ● SED | ● CT |
| ● CME | |

HQ Location

Eindhoven

Employees

45

Visiting address

Achtseweg Zuid 153M
5651 GW
Eindhoven

Contact person

Ingrid Oosterom

☎ +31 40 7805131

✉ ingrid.oosterom@B-invented.com

🌐 B-invented.com

🌐 [linkedin.com/company/
b-invented-b.v.](https://www.linkedin.com/company/b-invented-b.v.)



Building a better future together is possible if you don't see construction as a series of traditional actions, but as a process that can be optimized continuously. We do that by manufacturable designing and engineering. We keep a constant eye on the process and match our ideas with those of our clients and subcontractors. That way we can guarantee in advance that people, methods and resources fit together perfectly. The result is a smart, efficient and carefree construction process.

We currently do this with our 5 companies:

- B-invented B.V.
- B-smart fundering B.V.
- B-happy realisatie B.V.
- B-too B.V.
- B-leaf systeembouw B.V.

We create, construct and realize buildings today with the solutions of tomorrow. B-invented is our engineering firm for architectural- and structural engineering. Our approach is one that should suit you because we do it differently than other engineering firms. Our goal is to optimize the process of a total construction project. An optimal process gives maximum results and that's why we are driven construction improvers.



B-smart fundering realizes the complete substructure: from piling to the ground floor. The necessary structural and constructive engineering is provided by our sister company B-invented. They combine their knowledge with the experiences of our permanent implementation teams. To optimize the process, we have developed products that make this possible, such as the B-smart and B-smart S-elements and various prefab system components. Smart in the basics.

Since we are very conscious of our impact on current and future society, we recently introduced our newest B-group member, B-leaf systeembouw. As B-smart, B-leaf realizes complete substructures, however their choice of material differs. B-leaf's main materials are wooden construction systems.

B-happy takes care of the architecture, engineering and realization for all types of construction: from industrial buildings and logistics complexes to offices, apartments and homes. We mainly work for professional clients. In addition, we develop innovative visions such as exclusive villas, vertical neighbourhoods and visions for primary care centers and customized care homes. We prove it with our constructions!

Finally, B-too focuses on interior design of private interiors, business interiors and villa's.

Interested in working at B-invented B.V.? Scan the QR-code to view available vacancies.



Breed Integrated Design BV

Branch

Architecture and Structural Design

Classification

- AUDE
- USRE
- BPS
- SED
- CME
- SUMT
- SMDSA
- BT
- CT

HQ Location

Den Haag

Employees

15

Visiting address

Korte Koediefstraat 6-8
2511 CE
Den Haag

Contact person

Jeroen Evers

+31 70 7852944

info@breedid.nl

breedid.nl

linkedin.com/company/breed-integrated-design



INTEGRATED DESIGN

BREED Integrated Design is a structural design firm that considers that structure is more than a functional part of the architectural design. It can play an important role in the spatial experience. Structure can enrich the space, indicate scale and provides an aesthetic quality. In this way it is a design 'tool' and inherent to the architectural space. BREED ID likes to be actively involved in the design process at an early stage, to provide structural alternatives in order to look for an optimal result together with the architect and other design team members.

BREED Integrated Design was founded in 2006 by Gilbert van der Lee (1973) out of a predilection for the tension between structural engineering and architecture. Gilbert was the first student at TU/e to graduate in both masters 'Architecture' and 'Structural Design'. Later he also completed the study Master City Developer (MCD). In 2019 Jeroen Evers (1987) joined the management team. Jeroen has successfully completed a dual master track at TU/e in which he combined the masters 'Architecture' and 'Structural Design'. Gilbert and Jeroen work together with their team of engineers and architects on high-profile projects in The Netherlands and abroad. The projects are of all sizes; from artworks to high-rise buildings, from villas



to monkey residences, but also non-residential buildings and bridges. Below you'll find a selection of projects we are particularly proud of.

Villa 1 (in collaboration with Powerhouse Company) is a wonderful example of a project where structure and architecture are integrated. An important structural element in this villa is an open steel bookcase that supports and stabilizes the roof. For this, the bookcase is designed as a 'Vierendeel' truss. As a result, the roof, with large overhangs, appears to be largely floating. Not the closed end wall, but the bookcase, kitchen and the other permanent furniture do the work.

TIJ (in collaboration with RO&AD, RAU and Geometria) is a bird observatory in the shape of an egg. The egg is parametrically designed to find a good balance between architectural wishes and structural requirements. The structure is formed by a Zollinger system. As a result, large, double-curved spans can be made with wood. The Zollinger system is an old construction technique that can be applied again through digitization and automation. Through its

re-usability, its modularity, its materials and its contribution to the natural environment, it is almost completely circular and sustainable.

The Bahrain pavilion, World Expo 2015 Milan, (in collaboration with architect Anne Holtrop, landscape architect Anouk Vogel and Mario Monotti) is made up of 350 unique, white, partly curved prefabricated concrete panels. The starting point in the design was a pure appearance of dry-stacked concrete. It was a big technical challenge to design a demountable, earthquake-resistant, reusable minimalistic pavilion. The pavilion can now be visited in Bahrain.

We are a small firm with very challenging projects. If you like to develop further as an allround structural engineer / integral structural designer / table football player, visit our stand at the TU/e Bouwkunde Bedrijvendagen!

Interested in working at Breed Integrated Design BV? Scan the QR-code to view available vacancies.



Brink Management / Advies

Branch

Construction, Real Estate and Infrastructure

Classification

- AUDE
- USRE
- BPS
- SED
- CME
- SUMT
- SMDSA
- BT
- CT

HQ Location

Eindhoven, Rotterdam, Groningen

Employees

175

Visiting address

Kennedyplein 101, 3rd floor
5611 ZS
Eindhoven

Contact person

Annemieke Hamakers

☎ +31 6 54606019

✉ a.hamakers@brink.nl

🌐 brink.nl

🌐 [linkedin.com/company/brink-nl](https://www.linkedin.com/company/brink-nl)



BRINK

Join us at the forefront of construction, infrastructure, and real estate. We offer comprehensive market insights through our management and consultancy services, software solutions, and financial expertise. Together with our clients, we push the boundaries of what's possible. Each member of our team at Brink brings unique expertise, and we work closely with a diverse range of clients and partners. Our data-driven approach enables us to provide exceptional solutions to a variety of complex challenges. At the heart of it all is our commitment to excellence, and we invite you to join us on this journey.

At Brink, we offer a collaborative and innovative work culture, where growth and development are valued. Our challenging projects and dynamic environment provide exciting opportunities to work with talented professionals. Join us in changing the industry and shaping the future of construction, infrastructure, and real estate.



Interested in working at Brink Management / Advies? Scan the QR-code to view available vacancies.



Cauberg Huygen

Branch

Engineering (Building Physics)

Classification

- AUDE
- USRE
- BPS
- SED
- CME
- SUMT
- SMDSA
- BT
- CT

HQ Location

Rotterdam

Employees

140

Visiting address

Hoofdweg 76
3067 GH
Rotterdam

Contact person

Daniëlle Lagerwaard

+31 88 5152505

info@cauberg Huygen.nl

cauberg Huygen.nl

linkedin.com/company/cauberg Huygen



CAUBERG
HUYGEN

We are a consulting engineering firm focussed on the built environment, environmental consultancy for companies and industry, and environmental monitoring for government agencies. In the field of the built environment we have expertise in building physics, acoustics, sustainability, fire safety engineering and building quality. In addition we help companies realising their ambitions by consulting in topics like industrial noise, environmental zoning, nitrogen deposition and external safety requirements.

Our company is characterised by a flat organisational structure based on teams with a high degree of self-steering and the atmosphere is open and informal. We have a total workforce of about 140 employees and have offices in Rotterdam (main office), Amsterdam, Best, Zwolle and Maastricht. We offer our services nationally.



Interested in working at Cauberg Huygen? Scan the QR-code to view available vacancies.



CBRE B.V.

Branch

Commercial Real Estate

Classification

- AUDE
- USRE
- BPS
- SED
- CME
- SUMT
- SMDSA
- BT
- CT

HQ Location

Amsterdam

Employees

700

Visiting address

Anthony Fokkerweg 15
1059 CM
Amsterdam

Contact person

Valérie van der Kloot Meijburg

+31 6 27182761

valerie.meijburg@cbre.com

cbre.nl

linkedin.com/company/cbre-nederland

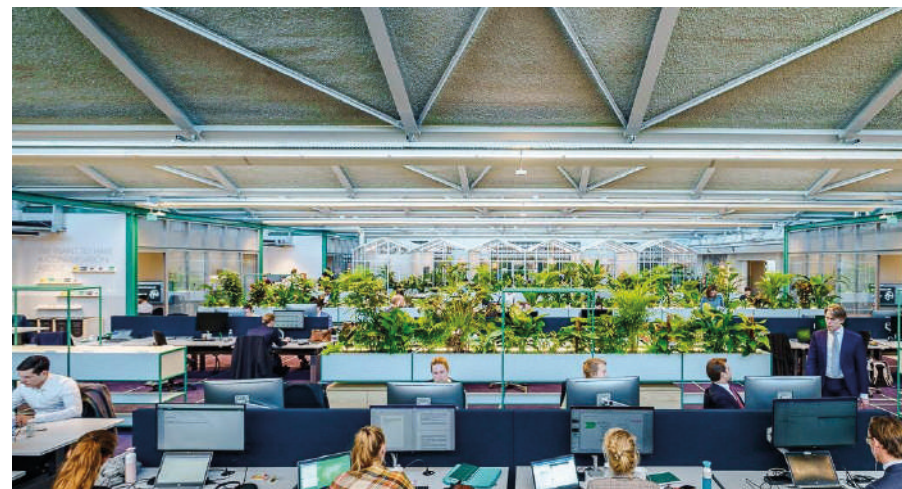


CBRE

CBRE is an organization where it does not matter if you are an experienced professional or a young talent or which position you hold. We offer everyone the freedom to identify and seize opportunities. We work hard for our successes and also celebrate these with each other, for example, after closing a deal of during our weekly drinks.

With over 100,000 employees spread over 500 offices in 100 countries, CBRE is global market leader in real estate consultancy. In the Netherlands our 600 professionals work each day on the most exciting real estate projects from our offices in Amsterdam, The Hague, Eindhoven, Rotterdam, Utrecht and Zwolle.

Since the beginning of 2019 CBRE has a new headquarters in the Schinkelbuurt in Amsterdam, named The Core. A new, innovative office under a 50-year-old roof in an old car garage. With this office we take a new path, we give entrepreneurship the space it needs, and we work closer together with our clients. At CBRE you will work with all kinds of specialists to provide a thorough advice. Professionals with a commercial, financial, architectural and even creative background and all with the same drive for real estate. We can also offer you as (young) professional extensive opportunities to develop your



managerial qualities on the one hand, while on the other hand evolving as specialist (thought leadership) through our collective training program, the CBRE Academy, but also via individual coaching opportunities. Hereby providing you with the opportunity to create an added value for our company but also for your own career.

Interested in working at CBRE B.V.? Scan the QR-code to view available vacancies.



Continu Professionals

Branch
Intermediary

Classification

- AUDE
- USRE
- BPS
- SED
- CME
- SUMT
- SMDSA
- BT
- CT

HQ Location
Eindhoven

Employees
300

Visiting address
Flight Forum 40
5657 DB
Eindhoven

Contact person
Kirsty Bushoff

☎ +31 40 2431919

✉ k.bushoff@continuu.nl

🌐 continuu.nl

🌐 [linkedin.com/company/322345](https://www.linkedin.com/company/322345)



Continu Professionals has a track record of almost 30 years in the recruitment industry. We are specialized in finding the right match between white collar specialists in the field of construction, civil engineering, electrotechnics and HVAC and companies in need for expertise. We do not only help finding secondment positions, but also assist candidates finding the right permanent position.

From offices spread all over the country (as well some in Belgium and Germany), Continu Professionals serves a large portfolio of companies and people, realizing our tagline 'Growth starts with Hello' on a daily basis. With a typical Dutch no-nonsense mentality, Continu has developed a deep knowledge of the building and industry business. Even after a person started in a new position and is not actively applying, they can still count on the expertise and advisory from the Continu advisors. We offer dedicated career tools, career tips and advice to help people move forward in their specialized technical career.

The possibilities are endless, dozens of courses and directions to choose from. In the end you know how to make the right choice, and then? Do you know which function of type of organization ultimately suits you? For example, what skills do you need to get your dream job?



Fortunately we can help you in making the right choices during your study. We are happy to prepare you for the market. How do we do that?

We would like to get in touch with you, because we can best help you by talking to you, informing you and getting to know you. That is why we like to visit the same places as you. In addition to visiting the same fairs, we also regularly organize events ourselves.

We also provide training at your school. Sharing is caring! So we love to tell you more about our expertise in the field, the need to know about soft skills and how to apply for a job. Everything to fully prepare you for finding your perfect internship, graduation assignment or your first job!

So, let's say HELLO to your ambitions! Come over and talk about it with one of our Continu advisors. Our door is always (and everywhere) open, we are happy to help you.

www.continuu.nl/student

Interested in working at Continu? Scan the QR-code to view available vacancies.



Croes Bouwtechnisch Ingenieursbureau

Branch

Architecture, Consultancy, Design and Engineering

Classification

- AUDE
- USRE
- BPS
- SED
- CME
- SUMT
- SMDSA
- BT
- CT

HQ Location

Nijmegen

Employees

43

Visiting address

Kerkenbos 1006
6546 BA
Nijmegen

Contact person

Maarten Braem

+31 24 3721919

bureau@croes.nl

croes.nl

linkedin.com/company/croes-bouwtechnisch-ingenieursbureau



croes

Bouwtechnisch Ingenieursbureau

Building a new future

For over 65 years, Croes Bouwtechnisch Ingenieursbureau has been a reliable partner for all kinds of architectural, engineering and construction projects. By adopting a flexible, result-oriented and integrated design approach and by using advanced modelling techniques, we provide potential added value for a wide range of clients. We are an innovative family business that combines traditional human values with modern entrepreneurship and we offer optimal services to our customers.

Sustainable partner

Aiming for tomorrow's liveable world means realizing our sustainable ambitions together. A circular approach requires close co-operation between the different disciplines in the construction process. Croes Bouwtechnisch Ingenieursbureau can offer many of these disciplines under one roof. Advising on possibilities, making meaningful comparisons and focusing on deliberate choices, that is our strength. Together with our clients we balance the various options in terms of utility and necessity. Basically, we do what should be done, but we also like to look at what can be done.

Flexible partner

The expertise of Croes Bouwtechnisch Ingenieursbureau demonstrates its



added value during all aspects of the building process regardless of the stage the project is in. Croes has the know-how and creative input to develop and steer the project in the right direction. We are a horizontal organization and can therefore make quick decisions with short lines of communication. Our employees each have their own specialization, but they are also well attuned, which enables us to respond quickly if required. Our employees have almost 1000 years' combined work experience.

Integral design

The synergy between our architects, structural and architectural engineers results in inspiring and compelling plans that often exceed the client's expectations. Through our creativity and by asking the right questions we offer an adequate solution within the specified budget and at the same time we unburden our customers as much as possible. Integral design means balancing and considering all aspects in order to apply the right information. With our approach and using 3D drawing packages and a high level of

BIM, we aim to reduce failure costs for our clients. A good process means not only a good design, but also a good final result.

Working at Croes Bouwtechnisch Ingenieursbureau

Croes Bouwtechnisch Ingenieursbureau values a good and long-term relationship with both its customers and its employees. Apart from a competitive salary and corresponding secondary benefits according to the applicable collective labor agreement, there is plenty of room for training opportunities, ideas and initiatives within a growing organization. Together we work on challenging projects in a horizontal organization.

"Will you join us and make tomorrow's world a better one?"

Interested in working at Croes Bouwtechnisch Ingenieursbureau? Scan the QR-code to view available vacancies.



Draaijer & LSa

Branch

Construction, Real Estate and Housing

Classification

- AUDE
- USRE
- BPS
- SED
- CME
- SUMT
- SMDSA
- BT
- CT

HQ Location

Utrecht/Rotterdam

Employees

100

Visiting address

Pythagoraslaan 101
3584 BB
Utrecht

Contact person

Yolanda Nout

+31 30 6592333

info@draaijerparkers.nl

draaijerparkers.nl

linkedin.com/company/
draaijer-partners



Strategic and organization-oriented housing

Draaijer and LSa are part of the Draaijer Group, a group of cooperating organizations. The common goal of the partners is to create, realize and exploit energetic and future-proof working and living environments. Together with their clients, the partners of the Draaijer Group work to create environments in which people feel comfortable and perform optimally.

Draaijer is a strategic partner in the field of smart and healthy housing. Draaijer believes in office buildings that encourage meetings and cooperation, in healthcare environments that contribute to faster patient recovery, and in schools that lead to better student and teacher performance. We think about the future by building in a circular and energy-conscious way and taking into account the impact on the environment. We do this in an integrated way and use technological innovations, thereby fulfilling the ambitions of our clients.

LSa is the specialist in the field of organization-oriented housing. This means that we pay attention to the organization itself, the people who work there and their environment. Things that are constantly changing. Housing rarely matches up seamlessly at all times with



what the organization does or with what the people in an organization need. Our task is to supervise that process and to ensure that it all works out the way our customers want it to.

The team of Draaijer and LSa consists experts in various fields. The combination of these fields of expertise makes us a dynamic team with a considerable amount of experience and knowledge about strategic and organization-oriented housing. We look at issues from different (integral) perspectives and know how to find an answer to every problem.

Inspiring work environment

Are you looking for an inspiring working environment that gives you energy and enables you to get the best out of yourself? Draaijer and LSa are growing continuously, which is why we have various challenging vacancies. Also we regularly work with (graduation) interns. We believe it is important that young talent can develop with us and we therefore try to give them a broad insight into the various possibilities within the world of construction and real estate.

We are proud of who we are and what we do. We enjoy working together in an open and innovative atmosphere. We do this flexibly, in terms of time, place and working hours. Our IT facilities and communication tools support this way of working. Freedom and responsibility are on top of our agenda. We pay active attention to your personal and professional development; that goes without saying and is actually our most important employment condition. Part of your personal development program is the Talent Management Analysis method, which focuses on your talents.

The Draaijer Group companies like to work together, give each other energy and strengthen each other wherever possible. We know how to make optimum use of each other's strengths.

Interested in working at Draaijer & LSa? Scan the QR-code to view available vacancies.



Dura Vermeer

Branch
Construction

Classification

- AUDE
- USRE
- BPS
- SED
- CME
- SUMT
- SMDSA
- BT
- CT

HQ Location
Rotterdam

Employees
3000

Visiting address
Airportplein 21
3045 AP
Rotterdam

Contact person
Arjen Wildvank

+31 10 2808700

info@duravermeer.nl

duravermeer.nl

linkedin.com/company/
dura-vermeer



*Dura Vermeer has offices throughout the Netherlands



Dura Vermeer is a family business that has been in existence since 1855. We are an independent construction company active in the Netherlands. Our independence and long-term continuity form the basis of our strategy.

With over € 1.6 billion turnover and more than 2,700 employees (2,696 FTEs), we are among the top players in the Dutch construction industry. We are active in residential construction, non-residential construction and infrastructure in the Netherlands.

Our core activities include the design, development and realisation of construction and infrastructure projects, transformation, maintenance and renovation. Within these activities, we are expanding our knowledge and skills in the field of technology.



Interested in working at Dura Vermeer? Scan the QR-code to view available vacancies.



Ector Hoogstad Architecten

Branch
Architecture

Classification

- AUDE
- USRE
- BPS
- SED
- CME
- SUMT
- SMDSA
- BT
- CT

HQ Location
Rotterdam

Employees
45

Visiting address
Hofplein 24
3032 AC
Rotterdam

Contact person
Kathalijne van Zutphen

+31 6 11420115

k.vanzutphen@ectorhoogstad.com

ectorhoogstad.com

linkedin.com/company/ector-
hoogstad-architecten-b-v-



Architecture for the love of progress

No-nonsense optimists

Everything we do at Ector Hoogstad Architecten is driven by our desire for progress. The firm's roots go all the way back to the post-war reconstruction of Rotterdam, and the spirit of that period shaped our no-nonsense approach to work and our preference for rational, practical solutions. Just as it did our love for the poetry of clarity, space, transparency and beautiful materials. It also led us to be optimists with a firm belief in progress, and this we shall forever remain.

Answering the most urgent questions facing the world today

It is through the above lens that we observe the challenges facing the world today. How do we limit climate change and learn to live with its already unavoidable consequences? What does the circular economy mean for our future daily lives? How do we seize the previously undreamt of opportunities of digitalization and escape its darker aspects? The development and sharing of knowledge is essential to our collective efforts to answer these pressing questions, for knowledge is the key to progress.



Architecture for the knowledge economy

This conviction imbues EHA's dedication to designing architecture in the service of the knowledge economy, both in the Netherlands and abroad. The communities served vary from primary schools to universities and from scientific research institutes to major industrial parks for innovation and advanced technology. For each of these distinct communities, we create visually appealing, functionally specific environments that allow the talent within them to flourish. Our buildings provide ideal conditions for coming together to collaborate and spark off each other's creative energy. This is architecture in its essential role as catalyst and source of inspiration.

Spaces for creating the future

These architectural qualities are palpable in every aspect of the building we designed for SRON, where fundamental research about the universe and our planet is conducted in perfectly realized state-of-the-art laboratories. As well as in the world's largest bicycle parking garage, our design setting new standards for infrastructural support of environmentally friendly mobility.



And again in Matrix VII, the science incubator in which ARCNL conducts research that powers the technology behind ASML's computer chips. For the Hyperion Lyceum, we created a highly distinctive building that helps students develop into curious and empathetic global citizens. And we designed the science complex for the University of Groningen in which Nobel Prize laureate Ben Feringa will soon be conducting his pioneering research into nanomotors.

Serving progress since 1959

Our practice was founded in 1959 by Jan Hoogstad, who learned the craft in the wake of WWII from greats such as Maaskant and Van Tijen. The current partners are Joost Ector, Koen Klijn, Gijs Weijnen and Chris Arts. They lead an international team of architects, sustainability experts, building engineers and process managers.

Interested in working at Ector Hoogstad Architecten? Scan the QR-code to view available vacancies.



Goudstikker - de Vries

Branch

Construction

Classification

- AUDE
- USRE
- BPS
- SED
- CME
- SUMT
- SMDSA
- BT
- CT

HQ Location

's-Hertogenbosch

Employees

70

Visiting address

Stadionlaan 81
5213 JJ
's-Hertogenbosch

Contact person

Wessel Manders

+31 88 6780530

w.manders@goudstikker.nl

goudstikker.nl

linkedin.com/company/
goudstikker-de-vries-b.v.



At Goudstikker-de Vries we offer you a working environment in which you can accelerate. We are an ambitious team, with a treasure of knowledge about engineering. Knowledge that we are happy to pass on to you. Whether you work as a consultant, constructor or BIM-specialist, your knowledge and experience contribute to achieving the best possible result. We go to great lengths to understand our customer's wishes.

A collaboration always starts with the design in mind. Together we create value by offering constructive and architectural solutions.

Our 'architectural heart' beats faster when it comes to constructive challenges or complex works in difficult locations. The requirements we set for our work require certain competencies that we are looking for in new colleagues.

What you deliver will soon be visible in a city, village or residential area. Not just for yourself, but for everyone. Users, residents or passers-by, everyone looks at beautiful buildings and creative constructions with admiration and respect, right? At Goudstikker-de Vries you get the chance to participate in this. This only makes our work more fun and interesting.

Working at Goudstikker-de Vries means challenging work, good career



opportunities and excellent employment conditions. With us you become part of a team of professionals and within this we value every individual. We create an environment that ensures that you can enjoy your work every day and achieve your personal goals.

If regular working from home suits you better because of the travel time, then that is possible. Just like using parental leave because you have or will have a busy family life. We are happy to think along with you about the employment contract that best suits your current stage of life. We are involved with each other.

Our lively staff association organizes fun activities and anniversaries and of course keeps all important events in its sights. Think for example of birthdays, moving house, weddings or the birth of a baby. Personal milestones deserve extra attention and should be celebrated.

From day one, we offer you plenty of room for your development within Goudstikker-de Vries, where you will receive excellent guidance. We pay

a lot of attention to the development and training of our employees in order to continue to guarantee the quality of our work. We work on this through a training, course or education. This makes it possible to continuously immerse yourself in your field, to develop yourself and to work on your career opportunities. Regardless of your knowledge or experience level.

With our Young-Professionals Program we offer an additional internal training program through informative lunch lectures, sharing knowledge and experiences or visiting a construction site. Together we discover what you are good at and what you like to do. A long-term and pleasant working relationship is created by letting you do the work that suits you best.

If you would like some more information or want to have a little chat please contact us!

Interested in working at Goudstikker - de Vries? Scan the QR-code to view available vacancies.



Heijmans

Branch
Contractor

Classification

- AUDE
- USRE
- BPS
- SED
- CME
- SUMT
- SMDSA
- BT
- CT

HQ Location
Rosmalen

Employees
5000

Visiting address
Graafsebaan 65
5248 JT
Rosmalen

Contact person
Elisa de Klerk

☎ +31 6 50179747

✉ eklerk@heijmans.nl

🌐 heijmans.nl

🌐 linkedin.com/company/heijmans

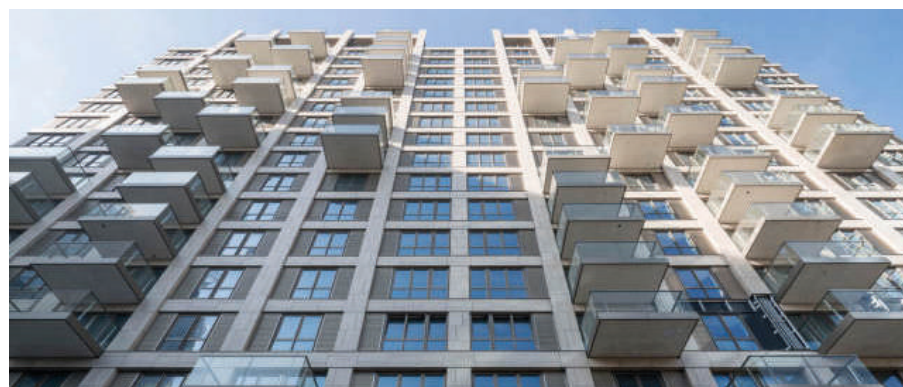


*Heijmans has offices throughout the Netherlands



With Heijmans you are contributing to the entire process of realizing a project. From engineering to realization to the maintenance. Through this you can see what goes into building the project and how it is utilized. That is what makes working at Heijmans divers and super interesting. With approximately 4,500 colleagues, you can build the spatial contours of tomorrow with us. Together we create beautiful projects of lasting value, for our customers and for society. It determines our success.

Do you want to become a part of that? Heijmans offers a range of opportunities to develop and challenge yourself. You can do an internship in the field of BIM, circularity, realization, engineering, tender management, client management or construction. We also offer a traineeship in which you can get a taste of everything Heijmans has to offer and at the same time follow a training program for a flying start to your career.



Interested in working at Heijmans? Scan the QR-code to view available vacancies.



ICSadvisers

Branch

Educational Housing and Social Real Estate

Classification

- AUDE
- USRE
- BPS
- SED
- CME
- SUMT
- SMDSA
- BT
- CT

HQ Location

Zwolle

Employees

130

Visiting address

Van Nelleweg 1
3044 BC
Rotterdam

Contact person

Robert van Kasteel

+31 6 82480540

recruitment@icsadvisers.nl

icsadvisers.nl

linkedin.com/company/
icsadvisers



ADVISEURS

ICSadvisers – Inspired housing consultants since 1955

"Children – and not bricks – should be the starting point of every building process".

About 65 years ago, there was a strong increase of population in the Netherlands. At that time, the number of schools seemed to matter more than the quality of the learning environment. School supervisors from the Ministry of Education and private school boards came together to discuss the situation. Their idea was that a well-defined educational vision would result in learning environments that enhanced the quality of education and the well-being of teachers, students and community. This led to the founding of ICS: "Information Centre for Schoolbuilding". Since then, the Netherlands has made great progress in the development of innovative learning environments.

Nowadays, we help our clients to realise their educational vision by providing advice and assistance at every stage of the building process. The result: a healthy, sustainable, flexible, efficient and inspiring learning environment. We provide advice and assistance in:

- Strategic Consultancy (scenario analyses, campus development, business cases, feasibility studies, location studies, master/housing plans,



creating partnerships).

- Linking Education & Architecture Cocreation (workshops, websites, study trips, functional analyses and functional design, design reviews, business plans).

- Project Management (selection of architects/contractors, tenders, real estate strategies).

Our consultants are experts in linking education and architecture. The backgrounds of our consultants lie in: architecture, business development, change management, education, engineering, financial management, project management, public administration and urban planning.

If you want to explore the possibilities in social real estate, you can as an advisor of project manager working on interesting cases of projects. Or you can also join the Young Professional Program of ICSinterim. This is a full-fledged employment with all the responsibilities and benefits that come with it. Difference is that you work 80% of your time at a municipality, school



board or healthcare institution, and the other 20% at our own consultancy, with a training and coaching program fully tailored to you. No internship or traineeship, but a job with a bonus! Interested in working at ICSadvisers or become a Young Professional with ICSinterim? Scan the one of the QR-code's to view available opportunities

Interested in working at ICSadvisers? Scan the QR-code to view available vacancies.



INBO

Branch

Architecture

Classification

- AUDE
- USRE
- BPS
- SED
- CME
- SUMT
- SMDSA
- BT
- CT

HQ Location

Amsterdam

Employees

150

Visiting address

Kon. Wilhelminaplein 29
1062 HJ
Amsterdam

Contact person

Jenny Kattenburg

+31 6 55112822

jenny.kattenburg@inbo.com

inbo.com

linkedin.com/company/inbo



We are INBO. The design office that dares to put people first. We like to involve users in our work; after all, they know what they really need. We ask, research and develop. If we can conceive it, we can build it.

Our aim is to make neighbourhoods more social and healthier. We design places where people, city and nature meet: spaces to feel at home in. Spaces for people.

INBO is a collective of passionate architects, architectural engineers, consultants and urban designers. We design spaces that make the urban environment greener and more people-friendly. We research, discover and develop. Buildings, districts, interiors and cities. Always together with the people who use these places; often together with partners and peers.

INBO strives to make the world a little more beautiful. Building on meaningful change gives us energy; we take pleasure in our work. The INBO signature is in the spaces in which people find each other. In which city and nature come together. In people-friendly spaces.



Interested in working at INBO? Scan the QR-code to view available vacancies.



KAW Architecten

Branch
Architecture

Classification

- AUDE
- USRE
- BPS
- SED
- CME
- SUMT
- SMDSA
- BT
- CT

HQ Location
Groningen

Employees
100

Visiting address
Kattenhage 1
9712 JE
Groningen

Contact person
Lisa Westerink

☎ +31 6 54100111

✉ personeelszaken@kaw.nl

🌐 kaw.nl

🌐 [linkedin.com/company/kawarchitecten](https://www.linkedin.com/company/kawarchitecten)



We are KAW, a company that works integrally on the most important function that space has in our living environment: living is about more than building a house. We work on solutions that contribute to good and future-proof living and comfortable living for people. As an architect, we shape space in buildings. As an urban planner, we create space in the city and neighbourhood. As a structural engineer, we create space with technical solutions. As researchers, we discover space to get things done. As a consultant, we create space for new strategies and visions. As a process manager, we make room for innovation.

Our assignments takes place on the scale of the house, neighborhood and district, city and village, region and province. We translate social and spatial issues into research, vision, strategy, plans and design. We work for governments, corporations, healthcare companies, developers, builders and social organizations, but at the end of the day we always have the end user in our mind.



Interested in working at KAW Architecten? Scan the QR-code to view available vacancies.



Koninklijke BAM groep nv

Branch

Construction and Technology

Classification

- AUDE
- USRE
- BPS
- SED
- CME
- SUMT
- SMDSA
- BT
- CT

HQ Location

Bunnik

Employees

9000

Visiting address

Runnenburg
3981 AZ
Bunnik

Contact person

Shannen de Jong

+31 6 50039243

Shannen.de.jong@bam.com

bam.com/nl

[linkedin.com/company/royal-bam-group](https://www.linkedin.com/company/royal-bam-group)



*BAM has offices throughout the Netherlands



Royal BAM Group focuses on the commercial and technical development, preparation and construction of residential and non-residential construction projects. We do so for public as well as private clients. This makes BAM a great employer to kickstart your career and find out what truly drives you. Will you put your knowledge to use for the construction of varied residential projects, or would you rather become an expert in technical maintenance services? Will you join our road construction team, or will you focus on the infrastructure that is needed for public transportation?

Within BAM you have the opportunity to become involved in many different types of projects, based throughout the entire country. Will you start your professional career with us? In addition to a challenging job, we also give you everything you need to continue working on your professional and personal development. Either by taking courses on specific themes or by learning on the job. And when we both feel that you are ready for the next step, there are always possibilities to take on a more senior role.

Do you want to learn more about all the benefits of working at BAM? We would love to tell you more!



Interested in working at Koninklijke BAM groep nv? Scan the QR-code to view available vacancies.



Movares

Branch

Consultancy and Engineering industry

Classification

- AUDE
- USRE
- BPS
- SED
- CME
- SUMT
- SMDSA
- BT
- CT

HQ Location

Utrecht

Employees

900

Visiting address

Daalseplein 100
3511 SX
Utrecht

Contact person

Sander Looijen

+31 6 25164513

recruitment@movares.nl

movares.nl

linkedin.com/company/movares



Movares

adviseurs & ingenieurs

A livable, accessible, and sustainable Netherlands: the question is not if we will get there, but rather how we will get there. That is the puzzle that we work on solving every day. Working at Movares means actively contributing to the solution of this complex puzzle while directly making an impact through working on some of the Netherlands' most complex infrastructural projects!

Every day, our 900 committed colleagues work towards realizing a livable, accessible, and sustainable Netherlands. We do this by providing our clients with knowledgeable advice and designs in six different fields; infrastructure, mobility, digital transformation, energy transition, circular construction, and climate adaptation.

At Movares, you will never work alone but always together with both your team and the client. No matter if it's a large or small client, together, we make it work! Examples of clients are Rijkswaterstaat, ProRail, provinces, municipalities, water boards, and network operators.

Because we always want to be innovative, we put great value into the learning and development of our employees. Next to freely accessible online study courses, we offer all juniors to join our Young Talent Program.



This program allows you to develop your professional skills and competencies over a period of 1,5 years. This way, you will continue to develop yourself professionally while constantly being challenged.

If you are always looking for opportunities and want to be innovative, you will fit right in at Movares!

Interested in working at Movares? Scan the QR-code to view available vacancies.



MR. STIR

architect + planner

Branch

Urbanism and Architecture

Classification

- AUDE
- USRE
- BPS
- SED
- CME
- SUMT
- SMDSA
- BT
- CT

HQ Location

Eindhoven

Employees

5

Visiting address

Torenallee 106-04
5617 BE
Eindhoven

Contact person

Martijn van Bussel

+31 6 14659637

info@mr-stir.com

mr-stir.com

linkedin.com/company/
mr-stir-architect-planner



MR. STIR

ARCHITECT + PLANNER

MR. STIR is a studio for urbanism and architecture, founded by Maarten Huls and Martijn van Bussel and located in Eindhoven.

At MR. STIR we like what we are doing. We get a lot of pleasure and satisfaction from creating the most beautiful and exiting spaces. While doing this, we are driven by the search for the right way to develop the full potential of a location. This is done by making a combination of the right ingredients to arrive at the perfect mix that meets the customer's demand.

Outside the lines

At MR. STIR we dare to take risks. We look at an assignment from different angles and dare to try a different approach. In this way, we not only continuously improve ourselves, but also our environment. We believe in the necessity of research by design in order to achieve an optimal result.

Better together

At MR. STIR, we always focus on the user. We are convinced that in spatial design assignments we can achieve more together than alone. Together ensures support, together ensures involvement, but above all together ensures quality. It is important that there is a good connection with those involved.



This is done by tailoring a presentation and the communication to the target group. An important quality of us as a spatial designer is that we communicate in visual language. An image says more than 1000 words. More importantly, images invite initiative. Initiative to get better together.

Interested in working at MR. STIR architect + planner? Scan the QR-code to view available vacancies.



MVRDV

Branch

Architecture and Urbanism

Classification

- AUDE
- USRE
- BPS
- SED
- CME
- SUMT
- SMDSA
- BT
- CT

HQ Location

Rotterdam

Employees

300

Visiting address

Achterklooster 7
3011 RA
Rotterdam

Contact person

Valeriia Savchenko

+31 10 4772860

hr@mvrdrv.com

mvrdrv.com

linkedin.com/company/mvrdrv



MVRDV

MVRDV is a globally leading architecture and urbanism practice based in Rotterdam with offices in New York, Shanghai, Paris & Berlin.

We create social, innovative, realistic, green and remarkable architecture for a changing world. We believe that our work makes the world a better place by realizing dreams that actively contribute to global urgencies.

Our highly collaborative, research-based design method involves clients, stakeholders, and experts from a wide range of fields from early on in the creative process. The results are exemplary, outspoken projects that enable our cities and landscapes to develop towards a better future.

We are a dynamic, ambitious and growing organization with currently more than 300 employees.

We'd love for you to join us!



Interested in working at MVRDV? Scan the QR-code to view available vacancies.



Nebest B.V.

Branch

Construction, Industry, Infrastructure,
Hydraulic Engineering

Classification

- | | |
|--------|---------|
| ○ AUDE | ○ SUMT |
| ○ USRE | ○ SMDSA |
| ○ BPS | ○ BT |
| ○ SED | ○ CT |
| ○ CME | |

HQ Location

Vianen

Employees

250

Visiting address

Marconiweg 2
4131 PD
Vianen

Contact person

Wouter van den Berg

+31 6 283 542 18

wouter.vandenberg@nebest.nl

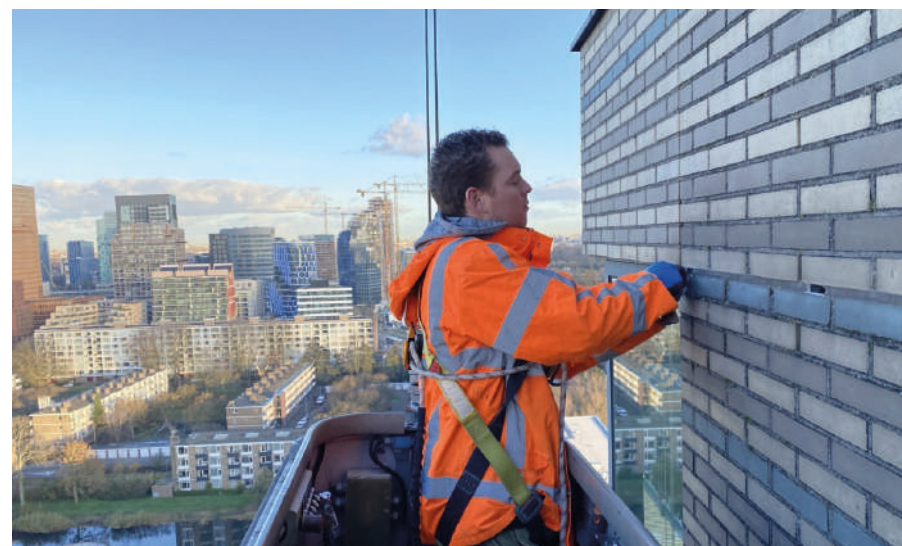
nebest.nl

linkedin.com/company/
nebest-adviesgroep



We are Nebest, an independent engineering/consultancy firm, specialized in inspection, in-depth technical research, consultancy, contract preparation and project management. Knowledge and integrated services enable us to support clients in construction, industry, infrastructure and hydraulic engineering throughout the entire project cycle and in all life cycles of assets. From inspection and in-depth research to project management, Nebest is your partner in the field of advice regarding new construction, maintenance and sustainability

The Building Engineering department focuses on architectural-, building physics- and structural materials research of buildings. This with the aim of extending the lifespan, increasing the safety level and increasing sustainability. The scope of these projects varies from visual research to in-depth technical research (in our own laboratory) or even the complete supervision of the ultimately recommended repair work. In addition, Nebest is continuously developing new, advanced research methods to support this work.



Interested in working at
Nebest B.V.? Scan the
QR-code to view available
vacancies.



Nieman Raadgevende Ingenieurs

Branch

Consultancy and Engineering

Classification

- AUDE
- USRE
- BPS
- SED
- CME
- SUMT
- SMDSA
- BT
- CT

HQ Location

Utrecht

Employees

150

Visiting address

Atoomweg 400
3542 AB
Utrecht

Contact person

Tamara Cevahir

+31 30 2413427

recruitment@niemangroep.nl

nieman.nl

linkedin.com/company/nieman-
raadgevende-ingenieurs-b-v-



NIEMAN®

DE RAADGEVENDE INGENIEURS

Creating buildings for safe, healthy and comfortable use, that is what Nieman's consultants and engineers aim for. Together with our clients trying to improve the built environment towards a more sustainable and circular world.

Nieman Raadgevende Ingenieurs is a multi-disciplinary engineering and consulting company providing state-of-the-art advice in the building and construction branch. With over 120 employees Nieman is supporting its clients from initiative to building exploitation with building physics, fire safety engineering, acoustics as well as building services and MEP. Throughout all these disciplines we strive to add sustainable and energy-efficient solutions in our projects. Our expertise lies not only in designing new buildings. With a large track record of projects in renovating, retrofitting and transforming existing buildings Nieman is one of the leading companies in the field. Our clients cover the complete real estate and construction branche, including local and national governments.

Nieman Raadgevende Ingenieurs is part of Nieman Groep. The Nieman Groep exists of independent business units. Each has its own expertise and role in order to empower and challenge each other to innovate collectively. Each unit



devotes its specialist knowledge and skill to create future-proof solutions in an environment where all disciplines empower each other. Every unit has its unique strength, but they all serve a single purpose.

Working at Nieman Raadgevende Ingenieurs means being a colleague to all Nieman Groep companies and enjoying all the benefits and opportunities Nieman Groep offers. Visit werkenbijnieman.nl to find out what working at Nieman Raadgevende Ingenieurs (part of Nieman Groep) means for you.



Interested in working at Nieman Raadgevende Ingenieurs? Scan the QR-code to view available vacancies.



OLCO maatschappelijk vastgoed

Branch

Consultancy and management Social Real Estate

Classification

- AUDE
- USRE
- BPS
- SED
- CME
- SUMT
- SMDSA
- BT
- CT

HQ Location

Driebergen-Rijssenburg

Employees

15

Visiting address

Hoofdstraat 41b
3971 KB
Driebergen-Rijssenburg

Contact person

Robert Klein

+31 30 6930396

algemeen@olco.nl

olco.nl

linkedin.com/company/olco



OLCO changes perspectives, as an advisor and as a developer. With this approach we pursue to translate a superficial tender to bigger ambitions. With over 60 years of experience, OLCO is a renowned 'green' advising consultancy in the fields of feasibility studies, process management and exploitation consultancy. Literally from the initiative to the realization, and beyond. Our projects fall in public sectors as sports, health and education and range from swimming pools and sports halls to schools, health institutions and townhouses.

This sector is a stirring one with large, leading projects in which the shared vision forms the main driver, but where practical, political, financial and societal interests should always be balanced out. A challenging field, but OLCO's twofold approach finds a way out: OLCO works both in the role of advisor next to the client as well as in the role of risk-taking developer for the client. This yields a compelling expertise that enables our young and professional project leaders and managers to oversee the stakes and determine the actual interests in a tender.

'Groots Denken Concreet Maken'

In OLCO's perspective, sustainability goes beyond the development itself and therefore inspires us to look further. We



Energy positive swimming pool in Rijssen (NL) ©Reitsema+Partners

do this in our 'Groen Doen' philosophy in which people, planet, profit and process form the pillars. This means we think further than wisely consuming energy and materials or financial benefits. We rather have a dialogue with the clients and users and excite them to realize successful, sustainable buildings. Successful for the user, the exploiter and the society.

Concretise your future

OLCO is always looking for ambitious young professionals that are ready to boost their professional career; as a junior project leader, as a graduate or as a (work)student. We take you along in our expertise in the diverse field and our vision in which sustainability and circularity are self-evident. And the users? They are without exception valued the key player in our approach towards a successful development. 'Groots Denken Concreet Maken' is our core business. And we dare you to do



the same. Drop the standard thinking patterns and really fulfil your ambitions. See our job opportunities page where Jurriën and Carolien show you what working at OLCO looks like and how we concretise your future!

Interested in working at OLCO? Scan the QR-code to view available vacancies.



OPPS B.V.

Branch

Construction management

Classification

- AUDE
- USRE
- BPS
- SED
- CME
- SUMT
- SMDSA
- BT
- CT

HQ Location

Houten

Employees

7

Visiting address

Het Kant 3
3995 DZ
Houten

Contact person

Martijn Zuurveld

+31 6 11325505

info@opps.nl

opps.nl

linkedin.com/company/opps



OPPS

OPPS specializes in public-private partnerships for complex housing and construction projects. We mainly focus on utility construction, but we are also involved in various residential housing projects and urban landscaping. We guide and support public and private parties before, during and after tender procedures. Due to the large variety of services that we offer, we contain a diverse knowledge base. This enables us to identify and understand the interests of all involved stakeholders, so that we may advise our clients in the most integrated and complete sense. Our mission: To contribute to the sustainable transformation of our built environment by offering smart and innovative partnership solutions.

Our services

We advise and guide our clients in every phase of the construction process, from first initiative to operational phase. We collaborate with clients about the feasibility, prerequisites and scope of the construction project. We advise on the public procurement strategy, develop ambition documents, requirement- and demand specifications, supervise the procurement procedure (guidelines, contracts) and provide quality- and process management. We consult our clients within the privatized sector, such as



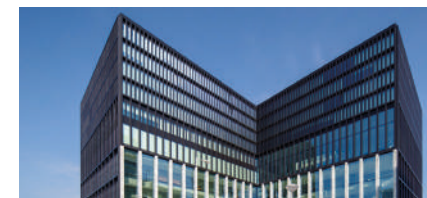
contractors and architects, with tender strategies, qualitative plans of operation and quality- & risk management.

Our projects

OPPS has a diverse portfolio of activities. We provide our services to public sector organisations such as the national government, provinces, municipalities and healthcare and educational institutions. We also consult the privatized market such as construction and installation companies, developers, architects and property owners. With our specific experience and knowledge of the industry, we offer custom solutions to all of our clients.

Sustainability

In all our services sustainability is an important factor. Besides sustainability legislation being a prominent incentive for public organisations to transform their property portfolio, it is also an indispensable theme for new construction projects. Hence, we are always searching for ways to incorporate sustainable solutions into the models of cooperations that underpin our projects. We strive for the stimulation of circular economy, the use of green energy, energy efficiency and environment- and water conservation. These goals translate to our day-to-day decisions and methods of approach for all projects. We have our



in-house sustainability specialist and confer frequently with the sustainability specialists of our clients.

Our team

We are a team of expert and committed advisors. We are both generalists, in that we are a Jack-of-all-trades within our field, and specialists, as each consultant has his or her own speciality. Besides our professional side, our relatively small team is very close. We have several team bonding activities throughout the year, such as dinners and the occasional drink. Once a year we even go skiing together!

Are you curious and ambitious? Do you want to help our clients find the right approach and solution for complex procurement procedures and tenders? At OPPS you get the unique opportunity to work on the most beautiful new construction and renovation/transformation projects together with governments, the best contractors and the smartest architects in the Netherlands.

Contact us for a meet and greet or a cup of coffee!

Interested in working at OPPS B.V.? Scan the QR-code to view available vacancies.



Pieters Bouwtechniek B.V.

Branch

Construction consultancy

Classification

- AUDE
- USRE
- BPS
- SED
- CME
- SUMT
- SMDSA
- BT
- CT

HQ Location

Amsterdam

Employees

180

Visiting address

Cruquiusweg 98 - S
1019 AJ
Amsterdam

Contact person

Patricia van Someren

+31 6 22744603

pvansomeren@pieters.net

pietersbouwtechniek.nl

linkedin.com/company/
pieters-bouwtechniek-bv



Pieters BOUWTECHNIEK

Pieters Bouwtechniek specialises in structural engineering. Our primary goal is a safe, functional and integral design for a building that meets the requirements and wishes of both the client and the user.

We work on varied assignments for universities, research institutes, architects, municipalities, housing associations, building contractors with a real estate development division, private individuals and project developers.

We are actively involved and advise the client from the design phase up to and including completion and handover. Pieters is able to create the optimal structural design.

Thanks to many years of successful collaboration with architects, project developers, contractors, structural engineers, building physicists and building equipment specialists at home and abroad, we have built up a depth and breadth knowledge and are now one of the leading companies in our field.

In recent years we have worked on many special and prestigious projects such as Villa VPRO in Hilversum, the WoZoCo apartments in Amsterdam, Museum Voorlinden in Wassenaar, the Warmtekrachtcentrale Utrecht, the Faculty of Applied Sciences at Delft



University of Technology, the Volkshotel in Amsterdam, POST Rotterdam and the Timmerhuis in Rotterdam.

With several branch offices and more than 180 designers, structural engineers, project managers and BIM modellers, Pieters is one of the largest independent structural and civil engineering consultancies in the Netherlands. Even so, because we are located regionally, customers can simply drop in for advice and the construction sites where we are active are never far away.

Internally, our flat organisational structure ensures that we are easy to approach, can respond proactively to design issues and quickly answer questions asked by the client and the design team.



Interested in working at Pieters Bouwtechniek B.V.? Scan the QR-code to view available vacancies.



Powerhouse Company International BV

Branch

Architecture

Classification

- AUDE
- USRE
- BPS
- SED
- CME
- SUMT
- SMDSA
- BT
- CT

HQ Location

Rotterdam

Employees

57

Visiting address

Antoine Platekade 1000
3072 ME
Rotterdam

Contact person

Annemieke Verschuren

+31 6 23540502

annemieke@powerhouse-
company.com

powerhouse-company.com

linkedin.com/company/
powerhouse-company

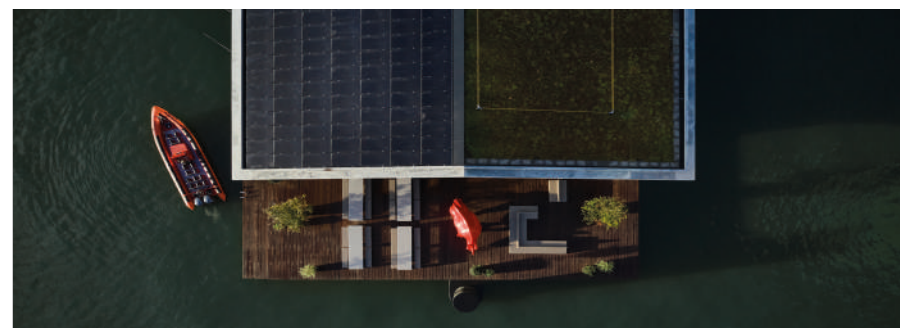
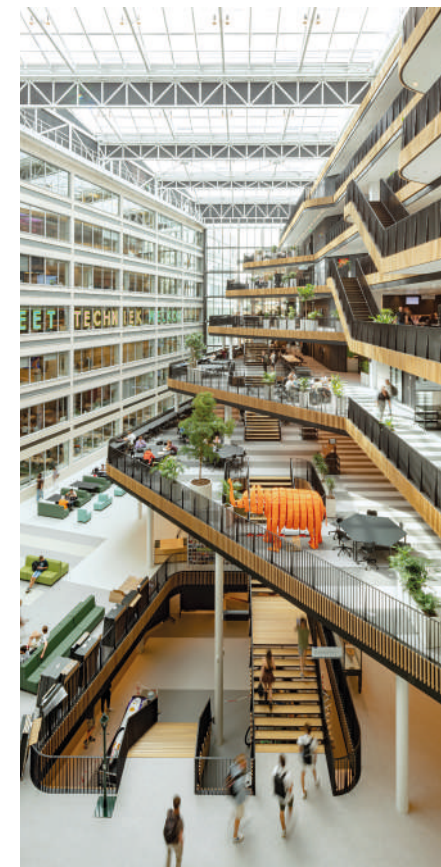
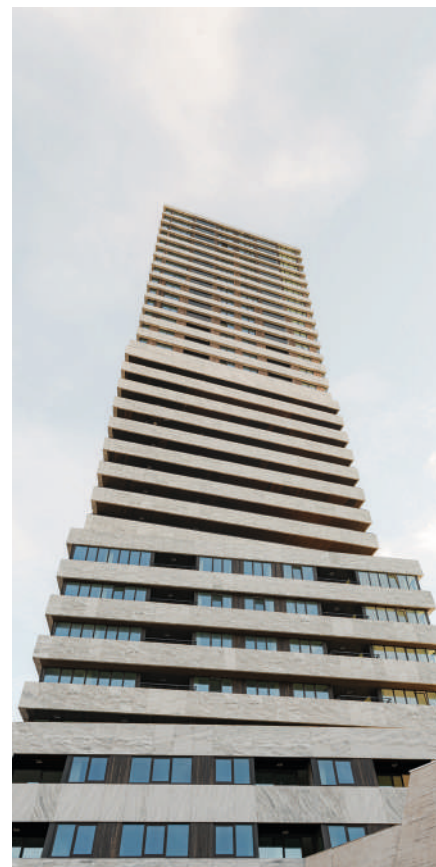


POWERHOUSE

At Powerhouse Company we believe in fostering bright and driven minds.

Our projects are vast, extensive and challenge the status quo of architecture. Passion and creativity is at the heart of it all, from what we do to how we do it. It's is a dynamic and nurturing environment: a place to grow and become a part of something bigger.

We have offices in Rotterdam, Munich, and Oslo. We are a full-service architecture and design company and cover every aspect of the design process, from concept to construction.



Interested in working at
Powerhouse Company
International BV? Scan the
QR-code to view available
vacancies.



Remmers Bouwgroep B.V.

Branch
Building and Infrastructure

Classification

- AUDE
- USRE
- BPS
- SED
- CME
- SUMT
- SMDSA
- BT
- CT

HQ Location
Tilburg

Employees
100

Visiting address
Kranenberg 1
5047 TR
Tilburg

Contact person
Jan van Ham - Karagoz

+31 13 5729300

✉ jkaragoz@remmersbouwgroep.nl

🌐 remmersbouwgroep.nl

🌐 [linkedin.com/company/remmers-bouwgroep-b-v-](https://www.linkedin.com/company/remmers-bouwgroep-b-v/)



Remmers Bouwgroep was founded in 1911 by A.J. Remmers as a family business. Today, well over 100 years later, we are still active as a construction company. During this period, we have gained a lot of experience in all kinds of different engineering solutions.

Our family business has evolved from a small local construction company to a professional engineering company with three divisions: Housing & Care, Sports & Education, and Corporate Housing. We create projects throughout the Netherlands.

We operate as an all-round business partner for our clients and we tend to think ahead and provide them with the best solution in all stages of engineering towards development. Our office holds all sorts of different specialities where we design, engineer, build and maintain our construction process. Our core values "To Inspire, To Create, To Realise and To Excel" are embodied in our external and internal processes to make the best projects.

We strive to build with the latest engineering solutions and we embrace sustainability. Which as a result has enabled us to construct and engineer BREEAM certified buildings. We perform our projects with outstanding results and



we continually put effort in improving our customer wishes. We do so by using our quality systems such as NEN-EN-ISO 9001:2015, NEN-EN-ISO 14001:2015, VCA**2017/6.0.

Personal development

Our staff possesses the right skills and knowledge. We have different growth opportunities and we provide a healthy working environment. We want to inspire our staff to create and achieve the best results possible. One can develop through our 'Remmers Academy' in which we provide various courses to improve personal and professional growth.

Our company vision is to create outstanding sustainable buildings, but above all, we want to create the best possible environment to live and work in. Our challenge and ambition

is to think further and to do better. We offer the best creative, innovative and qualitative solutions, with an outstanding sustainable life cycle of our buildings. In order to do so we have the most enthusiastic and committed employees who possess various skills in the workplace.

Join us!

If you would like to learn more about our company, you are welcome to contact us during the company fair. Visit our page www.remmersbouwgroep.nl to learn more about our jobs and opportunities. For more information you can follow us on LinkedIn.

Interested in working at Remmers Bouwgroep? Scan the QR-code to view available vacancies.



Republiq

Branch
Consultancy

Classification

- AUDE
- USRE
- BPS
- SED
- CME
- SUMT
- SMDSA
- BT
- CT

HQ Location
's-Hertogenbosch

Employees
35

Visiting address
Hinthamereinde 73d
5211 PM
's-Hertogenbosch

Contact person
Sander de Clerck

+31 73 8512623

werkenbij@republiq.nl

republiq.nl

linkedin.com/company/5270879



Making impact in public real estate

Together, we build the best and coolest real estate consulting firm of The Netherlands. We want to professionalise the real estate sector with innovative solutions.

We believe we can become game changers in the sector by using available data sources. We create the best conditions so that everyone can excel in their specific field. We believe if everybody does what they're good at, we achieve the best results. That starts by working hard and, above all, having a lot of fun.

Game changers in the sector

A new era within the real estate industry has occurred. By using data we become game changers in the sector. Data is fundamental for every real estate-related decision. That's why Republiq consists of 50% real estate advisors and 50% data scientists. This combination makes us unique from others: figures only come to life if you know what world lies behind them.



Choose your own focus

At Republiq we believe in mastery. We set the bar high for ourselves, our customers and the industry. And that starts with yourself. Choose what you are good at and become the very best at it. Taste all the possibilities within Republiq, but choose your own focus.

We do not have teams or departments in which you will work. You're going to do what you like. We are confident it will be a success.

Great Place to Work ®

We have been a Great Place to Work ® for 6 years in a row. Do you want to know more about us? Visit <https://republiq.nl/werken-bij> to get to know us even better.

Interested in working at Republiq? Scan the QR-code to view available vacancies.



RoosRos Architecten

Branch
Architecture

Classification

- AUDE
- USRE
- BPS
- SED
- CME
- SUMT
- SMDSA
- BT
- CT

HQ Location
Oud-Beijerland

Employees
60

Visiting address
LJ Costerstraat 2
3261 LH
Oud-Beijerland

Contact person
Henk de Gelder

☎ +31 18 6691580

✉ info@roosros.nl

🌐 roosros.nl

🌐 linkedin.com/company/roosrosarchitecten/



We are RoosRos Architecten, a nationally-operating, full-service architectural firm with a passion for our profession.

RoosRos Architecten stands for Respectful Stewardship. We feel responsible for a living environment that contributes to the well-being and happiness of people! Our work is based on this vision. Especially in our profession, we feel a duty to take care of our world and leave it in the best possible shape for the future. Our mission is elaborated along two lines: healthy and future-oriented, captured in our vision for the future (RoosRos2030).

Whether the project is small or large, simple or complex, we ensure it's technically sound down to the smallest detail. Created within budget and exceeding expectations. We manage every project from concept development to technical execution and construction supervision. Regardless of whether it's a private commission or a large-scale multifunctional development.

Our team consists of a mix of young enthusiastic talents and solid experienced practical experts. From our offices in Oud-Beijerland and Goes, we strive to realise meaningful architecture. We are happy to welcome new talent! An internship at RoosRos means working in a pleasant



working environment, with nice, different colleagues in a professional, ambitious team. At RoosRos you can be yourself and we appreciate and respect each other based on our culture and family DNA. Openness, cooperation and responsibility are very important to us. We invest in our people and our organization.

As an intern, you are really part of our organization and you bear your own responsibility. We think this goes without saying. For ambitious students, there is room for your passion! Due to the diversity of projects and the freedom that you are granted as an intern, you can develop yourself and there are a lot of possibilities open to you.

RoosRos is a learning organization. We contribute to a healthy and future-oriented built environment through innovation and cooperation in the

construction chain. Our services mainly consist of our knowledge and skills. That is where our added value lies. In this way we continue to develop, for example in the field of Arch-IT (BIM). We guide students during their internship in the field of engineering and architecture. There are also possibilities for research, for example in the field of Parametric Design. Independently and together with other project members, you ensure that RoosRos takes a step further within its vision of the future.

Interested in RoosRos or an internship at our office? Check out our website and get in touch with us!

Interested in working at RoosRos? Scan the QR-code to view available vacancies.



Royal Haskoning DHV Nederland

Branch

Engineering & consultancy

Classification

- AUDE
- USRE
- BPS
- SED
- CME
- SUMT
- SMDSA
- BT
- CT

HQ Location

Amersfoort

Employees

6000

Visiting address

Larixplein 1
5616 VB
Eindhoven

Contact person

Peggy van de Pas

+31 88 348 20 00

peggy.van.de.pas@rhdhv.com

royalhaskoningdhv.com

linkedin.com/company/
royal-haskoningdhv



*Royal Haskoning DHV has offices throughout the Netherlands



Royal HaskoningDHV is an independent consultancy which integrates 140 years of engineering expertise with digital technologies and software solutions. As consulting engineers, we care deeply about our people, our clients and society at large. Through our mission Enhancing Society Together, we take responsibility for having a positive impact on the world. We constantly challenge ourselves and others to develop sustainable solutions to local and global issues related to the built environment and the industry.

Change is happening. And it's happening fast – from climate and digital transformation to customer demands and hybrid working. The speed and extent of these changes create complex challenges which cannot be addressed in isolation. New perspectives are needed to accommodate the broader societal and technological picture and meet the needs of our ever-changing world.

Backed by the expertise of over 6,000 colleagues working from offices in more than 20 countries across the world, we are helping organisations to turn these challenges into opportunities and make the transition to smart and sustainable operations. We do this by seamlessly integrating engineering and design knowledge, consulting skills, software and technology to deliver more added



value for our clients and their asset lifecycle.

We act with integrity and transparency, holding ourselves to the highest standards of environmental and social governance. We are diverse and inclusive. We will not compromise the safety or well-being of our team or communities – no matter the circumstances.

We actively collaborate with clients from public and private sectors, partners and stakeholders in projects and initiatives. Our actions, big and small, are driving

the positive change the world needs, and are enhancing society now and for the future.

Our head office is in the Netherlands, and we have offices across Europe, Asia, Africa, Australia and the Americas.

Interested in working at Royal Haskoning DHV? Scan the QR-code to view available vacancies.



Branch

Consultancy and Project/Process Management

Classification

- AUDE ○ SUMT
- USRE ○ SMDSA
- BPS ○ BT
- SED ○ CT
- CME

HQ Location

Utrecht

Employees

+/- 100

Visiting address

Hondiuslaan 46
3528 AB
Utrecht

Contact person

Laura Poortvliet

 +31 88 0215330

 hrm@ryse.nl

 ryse.nl

 linkedin.com/company/rysebv



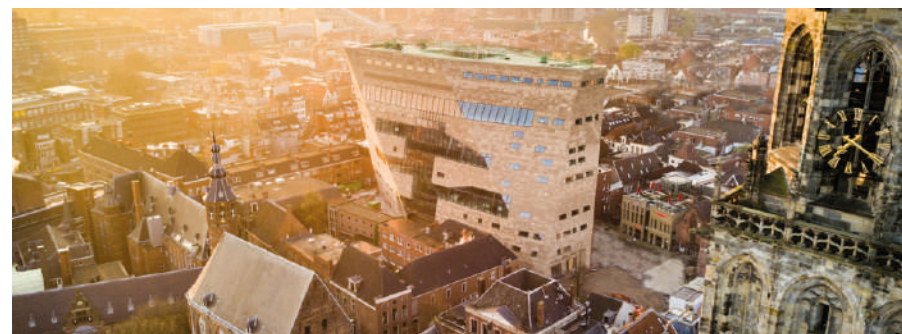
Adviseurs in vastgoed
strategie | ontwikkeling | realisatie

Everyday our consultants and project managers create future-oriented solutions for living, working and learning environments together with our clients. We realise the ambitions of our clients and enable them to stay on top of the development process. Our people always aim for the best possible results, preferably taking it even one step further. In this way, we help make the real estate industry a better place, every day. We are a successful company that is contributing to high-profile buildings and areas. WTC Amsterdam, microcity "Het Platform", Forum Groningen, Werelderfgoedcentrum Waddenzee, redevelopment of V&D Eindhoven and the city hall in Utrecht are some examples of projects we are proud of!

At RYSE, we take pride in our expertise and our skills. Our dynamic organisation is founded on experienced consultants and project and process managers. We offer our employees the kind of working and learning environment that nurtures their talents and curiosity. For instance, we organise many knowledge sessions with both in-house and external experts.

Young Talent Program

RYSE is always on the look-out for people who are passionate about their profession. People who get up in the morning determined to make a difference



and make our built environment more beautiful and more clever. If you join our team as a young, ambitious and enthusiastic talent you will participate in the Young Talent Program. This is a development program in which you work on broad professional knowledge, personal skills and effectiveness. You will also automatically become a member of the 'RYSING STARS' community run by and for junior project managers. RYSING STARS focuses on internal and external networking and knowledge sharing with lots of room for fun activities.

Kickstart your career at RYSE

Do you want to experience for yourself what it is like to work in the dynamic world of project management and kickstart your career? We always

welcome graduates, trainees and working students. Contact us for the possibilities!

At RYSE, we encourage people to excel at the individual level, but we also encourage them to become great team players.

Interested in working at RYSE? Scan the QR-code to view available vacancies.



SKS Group

Branch
Structural Design

Classification

- | | |
|--------|---------|
| ○ AUDE | ○ SUMT |
| ○ USRE | ○ SMDSA |
| ○ BPS | ○ BT |
| ○ SED | ○ CT |
| ○ CME | |

HQ Location
Roermond

Employees
60

Visiting address
De Hanze 10b
6049 HZ
Roermond

Contact person
Dirk Derikx

+31 68 3932295

dirk.derikx@sksgroup.nl

sksgroup.nl

linkedin.com/in/sks-group-2646b0107



SKS Group B.V., Engineering firm for building structures with more than 40 years of experience, was created by the operating companies WSM Engineering B.V. located in Roermond, Vander Weide van Bragt B.V. located in Eindhoven and Venlo and SKS Building Construction located in Dubai.

SKS Group B.V. is a solid company with a wide range of in-house knowledge in the design, calculation and detailing of concrete, steel and timber structures and other static and/or dynamically loaded components of building constructions for all housing and utility projects, from small to large, in the Netherlands and abroad.

All this in combination with a department specialized in the structural engineering of system floors (especially wide slab), hollow walls, beams and solid pre-cast concrete by highly qualified employees with a wide range of practical experience in the most diverse projects. Due to the project-based approach and working method, we provide economically justified advice and design.



In addition, SKS Group has the specialized know-how for damage assessments, geotechnical and building physics issues, and we provide advice for renovations, monuments and building damage.

We aim to be an added value by thinking and working with our clients in a planned manner and taking into account all design disciplines.

SKS Group B.V. offers you a total solution that is unique in the Netherlands and beyond. An agency that provides service and whose knowledge enables greater creative freedom of design.



Interested in working at SKS Group? Scan the QR-code to view available vacancies.



Snijders Ingenieursgroep

Branch
Structural design

Classification

- AUDE
- USRE
- BPS
- SED
- CME
- SUMT
- SMDSA
- BT
- CT

HQ Location
Veldhoven

Employees
90

Visiting address
Nijverheidslaan 155
5506 EC
Veldhoven

Contact person
Lonneke Lemm

☎ +31 40 2085250

✉ secretariaat@snijders-ig.nl

🌐 snijders-ig.nl/

🌐 [linkedin.com/company/snijders-ig](https://www.linkedin.com/company/snijders-ig)



Snijders Ingenieursgroep (SIG) is marketleader in designing, calculating and modeling precast constructions for utility and residential buildings. With offices in the Netherlands, Spain and Uruguay, SIG is involved in many high-rise constructions in Europe, as well as in South America.

SIG has a team of 90 engineers and they provide advice in the field of building constructions in concrete, steel and wood. Requirements as quality, cost reduction and sustainability are key for us. The ability of combining the design of main load-bearing constructions with detailed engineering (including file-to-factory) proves that SIG is distinctive in the market.

The demand for precast constructions has increased significantly the past years. This increase is not only due to the labour shortage we have in the Netherlands, but also due to the advantages of prefabricated constructions. Precast constructions does not only consist of walls, columns, stairs, balconies and other separate elements. In recent years the development of sandwich facades has made major steps forward. These facade elements are becoming more beautiful, larger and more complex. Also, to speed up the assembly process, more often precast concrete floors,



together with or without integrated MEP is used. Precast thinking and acting is becoming more and more common. Nowadays you can find complete precast bathrooms, MEP etc.

By building precast constructions, time can be saved and it also limits inconvenience for the neighbourhood. Before starting the construction, the elements are already engineered and produced. By doing so, the construction time of precast constructions is 25 to 30% shorter than a project in a traditional way. Shorter time means also less cost.

By the increase of precast constructions, most of the work will be done by the manufacturers, where the work can be done more safely and efficiently, instead of on the construction site. This means less space at the construction site, which is ideal for an inner-city construction. In a precast building

everything must be 100% correct, when assembled on site. In order to guarantee this, SIG sets high standards for its engineering process.

The most critical part of the construction process is the engineering process. When this is not under control, things will go completely wrong at the construction site. So an important task of the project manager of SIG is to coordinate various processes of the (sub)contractors, to ensure the engineering runs smoothly.

Interested in working at Snijders? Scan the QR-code to view available vacancies.



Stevens Van Dijck

Branch

Construction Managers and
Consultants

Classification

- AUDE
- USRE
- BPS
- SED
- CME
- SUMT
- SMDSA
- BT
- CT

HQ Location

Zoetermeer

Employees

40

Visiting address

Boerhaavelaan 34
2713 HX
Zoetermeer

Contact person

René van Kooi

+31 88 0024300

contact@stevensvandijck.nl

stevensvandijck.nl

linkedin.com/company/stevens-van-dijck



STEVENS VAN DIJCK

As an independent consultant and project manager for housing and real estate, we work for a wide range of national and international clients.

We always take the client's question as a starting point. With a broad range of services, we are committed consultants, experienced 'guides' in the real estate branch and sparring partners. We'll reach for the limit in finding possibilities, always in relation to our clients wishes and requirements.

Buildings are always meant to support the well-being and functioning of organizations and people. We use our expertise in the best interest of our client. Our commitment is to achieve and build better buildings.

Sustainable development is important to us. Our aim is to make a building better in terms of functionality, efficiency, and future value. Fortunately, by state of the art engineering a high level of sustainability and durability is within reach. We even go further by incorporating circular construction into projects. And of course also in our own business operations we aim to minimize our carbon footprint as well.

With our organization, we tend to be a professional community where people



©EvaBloem

feel comfortable because of shared values about our profession and working together. We love to challenge each other to reach higher levels in our discipline of professional consultancy.

We realize that the success of any project is based upon the way design and construction teams go beyond limits. Therefore we emphasize that a prolific co-operation with clients, other consultants and contractors, based on the ambitions we share, the principles we have in common and that what unites us, is required.

Come and visit us at our stand!

Interested in working at Stevens Van Dijck? Scan the QR-code to view available vacancies.



SVP Architectuur en Stedenbouw

Branch

Architecture and urbanism

Classification

- AUDE
- USRE
- BPS
- SED
- CME
- SUMT
- SMDSA
- BT
- CT

HQ Location

Amersfoort

Employees

45

Visiting address

Amersfoort
3811 GB
't Zand 17

Contact person

Henriët Hoekstra

+31 33 4701188

info@svp-svp.nl

svp-svp.nl

linkedin.com/company/svp-archi-
tectuur-en-stedenbouw/



SVP

SVP hosts architecture and urban planning in one company. With both disciplines united in our team we can work with high quality on different scales of a project. Working closely together on those projects is a must, not only within our team, also with our clients. We consider ourselves real partners for municipalities, real estate and future inhabitants. SVP wants to create living environments that are loved by users. Our intrinsic curiosity about what people do and don't do motivates us. We would like to design areas and buildings that are attractive to stay in, that are healthy, sustainable and that encourage people to develop.



Interested in working at SVP? Scan the QR-code to view available vacancies.



Sweco Nederland

Branch

Engineering consultancy

Classification

- AUDE
- USRE
- BPS
- SED
- CME
- SUMT
- SMDSA
- BT
- CT

HQ NL Location

De Bilt

Employees

1900 (20000 worldwide)

Visiting address

De Holle Bilt 22
3732 HM
De Bilt

Contact person

Lindsay van Heugten

+31 6 23915317

✉ lindsay.vanheugten@sweco.nl

🌐 www.sweco.nl

🌐 [linkedin.com/company/sweco/](https://www.linkedin.com/company/sweco/)



Do you want to make a difference? Then you have come to the right place at Sweco. Together with our clients, we design the cities of the future. We give you the chance to work on the most challenging projects. Enabling you to develop professionally and working closely with our clients is key to Sweco's continued success.

We are guided by the differences in our organization. As a person, as an expert. This is what we met and for each other. We stand for progress and are always on the move. Sweco is the sum of creative minds, advisors who build bridges between tomorrow and today and daredevils who dare to go further. We challenge the status quo and reward courage and action. You work at Sweco with head, heart and guts.



Interested in working at Sweco? Scan the QR-code to view available vacancies.



TwynstraGudde

Branch

Consultancy & project management

Classification

- AUDE
- USRE
- BPS
- SED
- CME
- SUMT
- SMDSA
- BT
- CT

HQ Location

Amersfoort

Employees

375

Visiting address

Oliemolenhof 14 A
3812 PB
Amersfoort

Contact person

Ilse van Milaan

+31 6 57992735

imi@tg.nl

twynstragudde.nl

linkedin.com/company/twynstragudde



TwynstraGudde is an independent and leading Dutch strategic and organizational consultancy firm. We mainly work on strategic and social relevant issues that have impact on (semi-) government and business organizations. These issues are complex and unique projects that can only be solved by sustainable, creative and innovative solutions. We work in the field of real estate, housing, spatial investments, area development, as well as security, care, energy, water, education, mobility and infrastructure. These subjects are classified in several groups.

Our group of Housing, Real Estate & Facility Management works in the fields of real estate policy, portfolio management, portfolio sustainability, project management, housing and workplace concepts, feasibility studies and financial business cases.

We believe in the development of our advisors. Therefore, from the moment you start working, you will be given a lot of responsibility. Together with your project members you will be in contact with clients and be challenged to use your skills in practice. While working on multiple projects, you will get a lot of freedom and flexibility in organizing your work. To guide you on the job, you will get a mentor and enthusiastic colleagues.



In addition to learning on the job, our junior advisors are offered an extensive educational program. In this program you will learn about aspects that will improve you as a young professional. Focus in this program is the development of skills and deploying these skills into practice.

Do you want to know more about what we do, what our working week looks like and who our clients are? Then contact us!

Interested in working at TwynstraGudde? Scan the QR-code to view available vacancies.



Van Aken - part of Sweco

Branch

Architecture and Urbanism

Classification

- AUDE
- USRE
- BPS
- SED
- CME
- SUMT
- SMDSA
- BT
- CT

HQ Location

Eindhoven

Employees

55

Visiting address

Bogert 18-20
5612 LZ
Eindhoven

Contact person

Anja Borsboom-Huijbregts

+31 40 2163311

info@vanaken-cae.nl

vanaken-cae.nl

linkedin.com/company/van-
aken-architecten/mycompany



VAN AKEN

Part of Sweco

Functional aesthetics

Functionality, viability and aesthetics in one overall design. VAN AKEN is the full-service engineering and architecture firm that achieves this ultimate combination. We have the expertise and experience to translate basic functional requirements into a technically sophisticated design. And the courage to turn that into an aesthetically attractive building.

Integral design

We all agree that form follows function. But our clients understand that a functional building only fulfils its potential when it connects with its surroundings and users. It is the sustainable dwelling in which residents immediately feel at home. The hospital that offers comfort after bad news. And the concert hall that still feels intimate despite its size. The key lies in making integral choices together to achieve that and create the winning combination. Not imposing one's own signature at all costs, but producing an aesthetically pleasing design that reflects the building's function.

Exceeding expectations

A building is more than a pile of bricks. A design is more than a wish list to be checked off. Our buildings are alive. Their character is entirely at the service of their user. Our added value therefore primarily emerges when we are given the scope



to be creative. With our inventiveness cementing function and aesthetics. Only then can we produce an integral design that meets all expectations yet still surprises.

Part of Sweco

As of January 2023, VAN AKEN is officially part of Sweco: Europe's leading Architecture and Engineering consultancy. Every day, Sweco works on the cities of the future. An ambition that fits seamlessly with VAN AKEN. We are now called "VAN AKEN - Part of Sweco", a step closer to the transition to become one new architectural firm in the Netherlands together with Sweco and JHK. Obviously, we continue

to be committed to exceeding the expectations of our clients and partners with courage, a critical attitude and connection. As you would expect from VAN AKEN. From now on, however, we will increasingly be doing so in collaboration with JHK and Sweco, so that we can achieve the best results for our clients and our projects.

Interested in working at Van Aken - part of Sweco? Scan the QR-code to view available vacancies.



Van Rossum

Branch

Ingenieursbureau

Classification

- AUDE
- USRE
- BPS
- SED
- CME
- SUMT
- SMDSA
- BT
- CT

HQ Location

Amsterdam

Employees

170

Visiting address

Pedro de Medinalaan 3a
1086 XK
Amsterdam

Contact person

Carolien Roozendaal

+31 20 6153711

info@vanrossumbv.nl

vanrossumbv.nl

linkedin.com/company/van-rossum-raadgevend-ingenieurs



VAN ROSSUM

RAADGEVENDE
INGENIEURS

We are Van Rossum. An independent structural engineering agency and consultancy founded in 1953. From four locations, we work with modesty and commitment on achieving our ambition of collaborating constructively, innovatively and creatively today to help shape the residential, working and living environments of tomorrow.

We do what we say and say what we do. With a long tradition in structural consultancy, we are quite passionate about organizing integrated solutions for diverse projects. We often also act as a catalyst in projects.

Putting forward various concepts with immediate cost estimates is a pragmatic design method for making important decisions at an early stage. Our input not only consists of providing constructive advice, but also and more particularly, of highlighting aspects that appeal to other consultants as well.

What we do

Our core values are innovation, drive, commitment and pragmatism. These words represent the way we work, what makes us unique, and how we call each other to account. Quality comes first. We listen carefully to our clients' wishes and work exclusively with expert



staff. We place high value on providing creative solutions within our own sphere of competence as well as in other consultants' areas of expertise. In this way we continue to innovate and deliver consistent quality. That is the power of shared responsibility. We are always looking for the best price-quality ratio and monitor simplicity in complex projects. Ultimately, this results in a successful integral approach and the best results.

One of our main tasks is to translate concepts aesthetically and economically into reliable structures. This is achieved by acting as a consultant to the client and as a member of the design team. Structuring a concept creates a clear structural design, with as few partial solutions as possible. Early in a design process, such choices can have a major effect on construction costs and quality.

Even after choices have been made, we continue to review them. The same goes for when new design developments present themselves.

Want to join the Van Rossum team?

We are always looking for ambitious new colleagues who want to join our team. We also have various internship and thesis positions available. Are you looking for a challenge as a structural engineer, modeller or projectmanager? We look forward to your application!

sollicitatie@vanrossumbv.nl

Interested in working at Van Rossum? Scan the QR-code to view available vacancies.



Van Wijnen

Branch

Construction and Real Estate

Classification

- AUDE
- USRE
- BPS
- SED
- CME
- SUMT
- SMDSA
- BT
- CT

HQ Location (South)

's-Hertogenbosch

Employees

2400

Visiting address

Utopialaan 54
5232CD
's-Hertogenbosch

Contact person

Mattias Voshol

+31 73 6994330

zuid@vanwijnen.nl

vanwijnen.nl

linkedin.com/company/van-wijnen/
mycompany



Van Wijnen (2.400 professionals, 27 locations) is one of the largest construction and property development companies in the Netherlands. We develop, build, transform, renovate and manage real estate in the domains of living, care, learning, work and recreation.

We are committed to affordable housing and vital neighbourhoods throughout the Netherlands. We contribute to a sustainable building process for the next generations. That is why we are fully committed to innovation. With Fijn Wonen, one of our housing products, we respond to the housing shortage and realize beautiful, sustainable, comfortable and energy-efficient homes. Directly from our own factory in Heerenveen. Other examples of innovation are our Living Lab on De Loskade in Groningen, participation in Project Milestone for 3D concrete print houses in Eindhoven and the funda Huis.



Interested in working at Van Wijnen? Scan the QR-code to view available vacancies.



Branch

Construction engineering

Classification

- AUDE
- USRE
- BPS
- SED
- CME
- SUMT
- SMDSA
- BT
- CT

HQ Location

Veldhoven

Employees

100

Visiting address

De Plank 110
5504 ED
Veldhoven

Contact person

Ilse van Delst

 +31 85 0866808

 i.vandelst@vericon.nl

 vericon.nl

 [linkedin.com/company/vericoningenieurs](https://www.linkedin.com/company/vericoningenieurs)

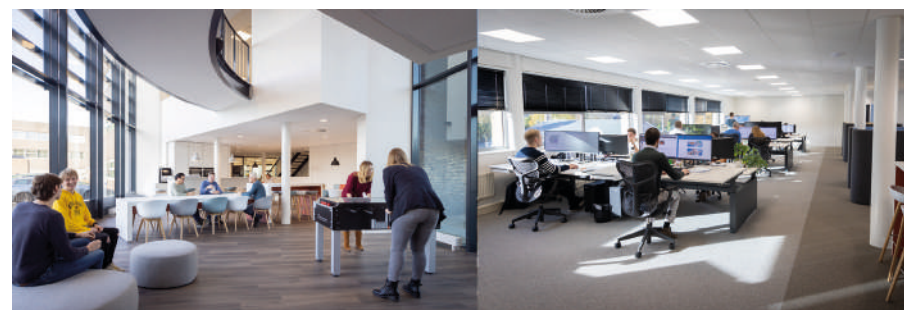


VeriCon

At VeriCon, we firmly believe that the world of construction can be improved, and we are committed to making a substantial contribution to that transformation. Construction needs to evolve from a craft to a technological development. We achieve this by prioritizing innovation and fostering collaboration. Through our innovative solutions, we can accelerate processes, enhance quality, and prevent significant costs resulting from failures. By always considering sustainability, we strive for a better world—and it's working. VeriCon has rapidly grown to become one of the largest companies for structural engineering in the Netherlands.

In the current complex construction industry, where a diverse range of specialists collaborate on the same project, VeriCon provides the solution. With a focus on both architectural considerations and end-user needs, we passionately offer advice, design, model, and calculate economically efficient and environmentally friendly structural designs. Of course we use the latest and most advanced software in the process. And if it doesn't exist, we develop it ourselves.

More and more stakeholders recognize the effectiveness of our approach, yet we haven't reached our ultimate goal. Within a few years, we aim to demonstrate that



our words are not just empty promises, but tangible improvements. Every day, we work diligently and passionately toward this objective. We currently have nearly a hundred structural engineers and 3D engineers.

Variety is at the heart of what we do. Whether it's concrete, steel, or wood, and regardless of the project type, be it residences, high-rise buildings, or unique structures, we embrace challenges and thrive on variety. Collaboration is essential, not only with all parties involved in the construction process but also with you—the engineer of tomorrow.

Would you like to be part of our team and embark on challenging projects? At VeriCon, you will gain practical experience and receive guidance from the best professionals in your field. You are always welcome in our offices in Veldhoven and Druten.

We are eager to speak with you and discuss the possibilities. We look forward to meeting you at the Bouwkunde BedrijvenDagen!

Interested in working at VeriCon? Scan the QR-code to view available vacancies.



Volantis B.V.

Branch

Engineering, Architecture and Consultancy

Classification

- AUDE
- USRE
- BPS
- SED
- CME
- SUMT
- SMDSA
- BT
- CT

HQ Location

Venlo, Eindhoven, Geleen

Employees

110

Visiting address

Villafloraweg
5900 AL
Venlo

Contact person

Nikola Maronska

+31 6 26519885

n.maronska@volantis.nl

volantis.nl

linkedin.com/company/1178742/admin/



Engineering, architecture and consultancy group Volantis realizes new and innovates existing buildings, processes and production environments. We do this in all sectors, but mainly in industry and healthcare. From small to large and for clients from all over the world. We are creative and practical. We think along and act. We discover and undertake.

Volantis creates, coordinates, directs, manages and unburdens you from start to finish. From the design and environmental permit process to the construction or renovation phase, and beyond. Our multidisciplinary team builds complete industrial production facilities according to EPCM. We also provide effective and efficient solutions to improve production environments and processes and make them more sustainable.

We are compactly organized with 110 enthusiastic changemakers and respond quickly and flexibly to any challenge from our 3 offices in Eindhoven, Venlo and Geleen. Our expertise is divided over various Business Units. The mission of Volantis is 'Change the perspective', or think differently, do better. We are creative and dare to leave the beaten track to innovate and thus arrive at better, smarter, more efficient, more effective and/or more sustainable solutions.

Volantis B.V. is a multidisciplinary engineering and consultancy company based in the Netherlands. They provide a wide range of services in the fields of engineering, architecture, project management, and sustainability. Their goal is to create sustainable and innovative solutions that contribute to a better built environment.

Key Services:

Engineering: Volantis B.V. offers engineering services for various sectors, including industry, healthcare, education, and infrastructure. They provide expertise in mechanical, electrical, and plumbing (MEP) engineering, as well as building physics, energy optimization, and sustainable design.

Architecture: The company provides architectural design and consultancy services, focusing on creating functional and aesthetically pleasing spaces. They collaborate closely with clients to understand their needs and deliver tailored architectural solutions.

Project Management: Volantis B.V. offers project management services, assisting clients in overseeing and coordinating construction and development projects. They aim to ensure that projects are delivered on time, within budget, and to the highest quality standards.

Sustainability: Volantis B.V. is committed to sustainable development and offers consultancy services to help clients integrate sustainable solutions into their projects. They provide expertise

in energy efficiency, renewable energy, circular economy, and sustainable building certifications.

Virtual Design & Construction (VDC): Using advanced Building Information Modeling (BIM) techniques, Volantis B.V. offers VDC services to enhance collaboration, reduce errors, and optimize construction processes. They utilize digital models to improve project coordination and communication.

Projects and Expertise:

Volantis B.V. has an extensive portfolio of projects across various sectors, including healthcare facilities, educational institutions, commercial buildings, and infrastructure projects. They have expertise in areas such as sustainable building design, energy optimization, indoor climate control, and smart buildings.

Conclusion:

Volantis B.V. is a multidisciplinary engineering and consultancy company in the Netherlands, specializing in engineering, architecture, project management, and sustainability. With a focus on creating sustainable and innovative solutions, they strive to contribute to a better built environment.

Interested in working at Volantis B.V.? Scan the QR-code to view available vacancies.



Werken bij de WOCO

Branch

Real Estate

Classification

- AUDE
- USRE
- BPS
- SED
- CME
- SUMT
- SMDSA
- BT
- CT

HQ Location

-

Employees

2400

Visiting address

Laan van Brabant 50
4701 BL
Roosendaal

Contact person

Judith van Dorst

+31 88 2552000

j.vandorst@alwel.nl

werkenbijdwoco.nl

linkedin.com/company/
werkenbijdwoco/



*Werken bij de WOCO is a partnership between
all housing corporations in Brabant



Together we make living better. For everyone.

WOCO is an initiative of no less than 34 cooperating housing corporations throughout the whole of Brabant. The housing corporations of Brabant are there for all people living in social housing or that want to live in social housing. It are quite a few people when realizing that one in three dwellings is social housing. Starters, families, singles, seniors... we believe that everyone with a lower income has the right to a fitting dwelling in a pleasant environment.

Together we are committed to realizing sufficient, good, affordable and sustainable homes. Not only in the cities of Brabant but also in its villages. Apart from this, we also play an important role in tackling social issues. This way, we focus on the energy transition, livability of neighborhoods, energy poverty, living and healthcare.

Every day we tackle these issues together with governments, companies, caretakers, tenants and a large network of partners. We keep investing in houses, neighborhoods, villages and cities, everywhere in Brabant.



Our important challenges

Since the real estate market keeps changing and we like to look ahead, we focus on four important challenges:

• How do we get more available dwellings?

Making sure there is sufficient social housing in the real estate market.

• How do we keep dwellings affordable?

Making sure the costs of living remain affordable for tenants.

• How do we make dwellings more sustainable?

Making sure dwellings become more sustainable and comfortable. For everyone.

• How do we keep the living environment livable?

Making sure neighborhoods and municipalities are pleasant to live in.

Interested in working at
Werken bij de WOCO?
Scan the QR-code to view
all participating housing
corporations.



Branch

Engineers and advisers

Classification

- AUDE
- USRE
- BPS
- SED
- CME
- SUMT
- SMDSA
- BT
- CT

HQ Location

Nieuwegein

Employees

500

Visiting address

Ringwade 41
3439 LM
Nieuwegein

Contact person

Miranda Tijmensen

+31 88 9102000

nl.sollicitaties@wsp.com

wsp.com/nl-nl

linkedin.com/company/wspnederland/mycompany



WSP is a global consulting and engineering firm with its headquarters in Montreal, Canada. In the Netherlands, we work with 480 colleagues at 9 locations. We offer an integrated service package in the areas of Transport & Infrastructure, Property & Buildings, Earth & Environment and Power & Energy. Our teams search for sustainable solutions and we invest in knowledge development on cross-border themes such as future-oriented building, climate adaptation, energy transition and digitalisation. Because we want to improve the world. That sounds big. But we believe we can make that difference. Together, we make a future-proof living environment. Together, we make the world Future Ready.

What we stand for

- From a personal contact point-of-view with our customers, our committed and skilled experts show ownership in creating realisable solutions every day.
- We opt for an organisation in which top-quality experts take centre stage.
- For our customers, being ahead, anticipating and offering state-of-the-art solutions every time makes the difference.
- Our employees are the company's assets. Continuously developing their qualities and skills is essential. Skills that come together in the assurances we promise.



Paleis Het Loo, Apeldoorn



Duinhotel Tien Torens, Zoutelande

The biggest investment? That we make in our people. Because moving the world forward starts with each other.

Are you looking for an internship or job? We offer young professionals an interesting career with a lot of growth opportunities and personal development!

Interested in working at WSP? Scan the QR-code to view available vacancies.



Branch
Building Consultancy

Classification

- AUDE
- USRE
- BPS
- SED
- CME
- SUMT
- SMDSA
- BT
- CT

HQ Location
Den Haag

Employees
22

Visiting address
Balistraat 1
2585 XK
Den Haag

Contact person
Saya Hoelasie

☎ +31 70 3615559

✉ contact@zri.nl

🌐 zri.nl

🌐 [linkedin.com/company/zri](https://www.linkedin.com/company/zri)



ZRi is a building consultancy agency with multiple disciplines: building physics, building technology, tendering, contracting and building management. We are working with a group of approximately twenty-five young colleagues on leading construction projects in the Netherlands. We are located in The Hague.

We have a wide range of clients. Our focus is on social real estate, such as educational buildings, hospitals and museums. Besides we are also working on commercial real estate projects, like housing, offices and hotels.

We advise on both the process and technique in construction projects. With great enthusiasm, commitment and quality orientation, we work on large and small, complex projects and make a difference by always striving for the best solution for the best and most sustainable building.

Do we have your attention? Are you curious? See our website for more information, follow us on LinkedIn, or get in touch.



Interested in working at ZRi? Scan the QR-code to view available vacancies.



Expressions of Gratitude

Board 2023-2024

We would like to take this opportunity to thank all participants who made this 23rd edition of the Bouwkunde Bedrijvendagen possible. As a board, we put our best effort into improving the Bouwkunde Bedrijvendagen and organizing events which contribute to the networking skills and professional network of both students and companies. We hope everyone had educative, insightful and memorable weeks to start building their dreams into reality. As of the 11th of October 2023, this edition of the Bouwkunde Bedrijvendagen will come to an end.

As of March 2023, we, as the 22nd board, have been able to continue the organization with a strong base laid by our previous boards. We want to thank them all for their previous contributions and a special thanks goes out to the 21st board, who guided us as our advisory board. Furthermore, all three committees within the board showed dedication, enthusiasm and willingness to learn and improve. The Business Contact Committee managed to create and maintain an extensive network of participating companies. The Organization Day Committee created the fundamentals for all the events. The Promotion Committee managed to reach students from all over via multiple channels of promotion. Additionally, we would like to thank our main sponsor Koninklijke BAM Groep for their confidence, help and contributions.

In organizing and promoting our events, the study associations played a meaningful role. We want to thank them for their cooperation and contributions to this year's events.

To all the participating students, companies, sponsors, volunteers, the Committee of Recommendation and the 21st board of the Bouwkunde Bedrijvendagen, thank you for your interest, dedication and hard work for this year! We hope to see you all during the next edition!

The 22nd board of the Bouwkunde Bedrijvendagen



**Thank you all for participating,
see you at the next edition!**



Other interesting companies

The following company will not be present at the Bouwkunde Bedrijvendagen this year. However, check out their pages through the QR codes. If you would like to get into direct contact with this interesting company, please email us at bedrijvencontact@bouwkundebedrijvendagen.nl



aangenaam
WERKEN, WONEN & LEVEN

Branch
Consultancy and Real Estate

Interested in working at
Nibag?



Website



CREATING A MIND OF YOUR OWN

Studying at TU/e means that you'll become the academic professional of the future. Studium Generale (SG) guides you along this journey and helps you to expand your horizon on a scientific, cultural, societal, and personal level. Together with students, Studium Generale organizes lectures, debates, movies, documentaries, theatre performances, concerts, exhibitions, workshops, and excursions. You'll learn to look at the world with a curious, involved, and critical eye. And besides that, it's also great fun to visit the programs.

Free and nearby

SG programs mostly take place on TU/e campus, like in De Blauwe Zaal Auditorium, Corona hall in Luna and in Filmhuis De Zwarte Doos. The majority of those are free to visit for both students and all those interested. So come and explore the activities and subjects that aren't mentioned in your study books!

Check out what's coming up on www.tue.nl/sg.

Follow us on social media @studiumgeneraletue to keep yourself updated on all the activities.



Studium
Generale
TU/e

MyFuture.tue.nl

TIME TO BUILD YOUR FUTURE



*Find & develop
your skills!*

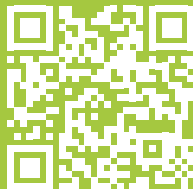
BUILD YOUR CONSTRUCTION CAREER

FIND A (NEW) JOB

Use your skills in construction to make a real impact and start a (new) job through Evoke. From work preparation and execution to BIM and design. And from project management to advice, inspection, and supervision. Do you wish to contribute to sustainable and modular buildings? Or supervise projects from inception to completion? Whichever you choose, browse our vacancies in construction and build your future!

EVOKE CENTERS YOU

Trough us, professionals and employers get to know each other through and through. Meanwhile, in our role as Career Coach, we offer guidance and coordination, assuming the obligations and responsibilities of the employer. A smooth and transparent process, aimed at a seamless transition. And with proven success - 80% of our Evokers secure permanent employment after the secondment period! Curious to know more? Scan the QR-code and boost your career in construction!



What is natural urban life to you?

At KOW, we are aware of the impact we can make with our designs. We aim to be a catalyst for positive change through our architecture & spatial designs, creating buildings & areas that contribute positively to our world. We strive for a balance between humans & nature, economy & a healthy, sustainable future.

Natural urban life

KOW designs natural urban life. By applying this principle to each design, a symbiosis between nature & urbanization emerges. It involves finding a balance between natural living in the city, comfortable urban densification, & social solutions for a

resilient society. Rather than pushing the limits of our planet, our projects aim to make a positive impact on nature, people, neighborhoods, & cities. Through our designs, we create places of peace, space, & connection, thereby contributing to the well-being of all residents, visitors & users.

Ideas are created together

With a positive mindset, we can shape a world we want to see. To initiate a powerful movement, we must work together to transform our environment. We are brimming with ideas. What does natural urban life mean to you?



Binckhorstlaan 36
2516 BE Den Haag

Torenallee 20
5617 BC Eindhoven

+31 (0)70 346 66 00
denhaag@kow.nl

+31 (0)40 250 32 32
eindhoven@kow.nl



This image shows a single sheet of white paper with horizontal blue or grey ruling lines. The lines are evenly spaced and run across the width of the page, typical of notebook paper. There are no margins, text, or other markings on the page.